



# SZABO SCANDIC

Part of Europa Biosite

## Produktinformation



Forschungsprodukte & Biochemikalien



Zellkultur & Verbrauchsmaterial



Diagnostik & molekulare Diagnostik



Laborgeräte & Service

Weitere Information auf den folgenden Seiten!  
See the following pages for more information!



### Lieferung & Zahlungsart

siehe unsere [Liefer- und Versandbedingungen](#)

### Zuschläge

- Mindermengenzuschlag
- Trockeneiszuschlag
- Gefahrgutzuschlag
- Expressversand

### SZABO-SCANDIC HandelsgmbH

Quellenstraße 110, A-1100 Wien

T. +43(0)1 489 3961-0

F. +43(0)1 489 3961-7

[mail@szabo-scandic.com](mailto:mail@szabo-scandic.com)

[www.szabo-scandic.com](http://www.szabo-scandic.com)

[linkedin.com/company/szaboscandic](https://www.linkedin.com/company/szaboscandic) 

## SLC34A2 antibody

Cat. No. GTX04719

Host	Rabbit
Clonality	Polyclonal
Isotype	IgG
Application	WB, ICC/IF, IHC-P
Reactivity	Human, Mouse, Rat

Package  
100 µg

## APPLICATION

## Application Note

\*Optimal dilutions/concentrations should be determined by the researcher.

Suggested dilution	Recommended dilution
WB	0.1-0.5 µg/mL
ICC/IF	2 µg/mL
IHC-P	0.5-1 µg/mL

Not tested in other applications.

Calculated MW 76 kDa. ([Note](#))

## PROPERTIES

Form	Liquid
Buffer	4 mg Trehalose, 0.9 mg NaCl, 0.2 mg Na <sub>2</sub> HPO <sub>4</sub>
Preservative	0.01 mg sodium azide
Storage	Store as concentrated solution. Centrifuge briefly prior to opening vial. For short-term storage (1-2 weeks), store at 4°C. For long-term storage, aliquot and store at -20°C or below. Avoid multiple freeze-thaw cycles.
Concentration	0.5 mg/ml (Please refer to the vial label for the specific concentration.)
Immunogen	A synthetic peptide corresponding to a sequence in the middle region of human SLC34A2.
Purification	Purified by antigen-affinity chromatography
Conjugation	Unconjugated

**Note**

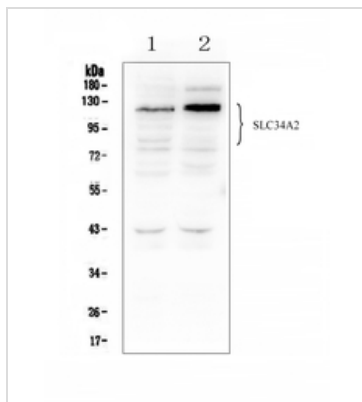
For laboratory research use only. Not for any clinical, therapeutic, or diagnostic use in humans or animals. Not for animal or human consumption.

Purchasers shall not, and agree not to enable third parties to, analyze, copy, reverse engineer or otherwise attempt to determine the structure or sequence of the product.



For full product information, images and publications, please visit our [website](#).

## DATA IMAGES

**GTX04719 WB Image**

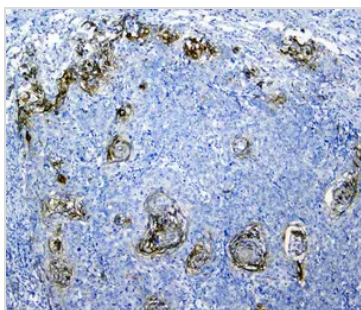
WB analysis of various samples using GTX04719 SLC34A2 antibody.

Lane 1 : HEK293 whole cell lysate

Lane 2 : K562 whole cell lysate

Loading : 50 µg

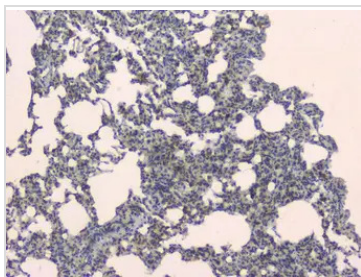
Dilution : 0.5 µg/mL

**GTX04719 IHC-P Image**

IHC-P analysis of human lung cancer tissue using GTX04719 SLC34A2 antibody.

Antigen retrieval : Heat mediated citrate buffer (pH 6.0)

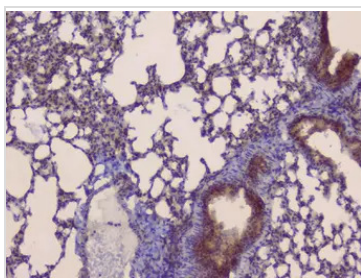
Dilution : 1 µg/mL

**GTX04719 IHC-P Image**

IHC-P analysis of rat lung tissue using GTX04719 SLC34A2 antibody.

Antigen retrieval : Heat mediated citrate buffer (pH 6.0)

Dilution : 1 µg/mL

**GTX04719 IHC-P Image**

IHC-P analysis of mouse lung tissue using GTX04719 SLC34A2 antibody.

Antigen retrieval : Heat mediated citrate buffer (pH 6.0)

Dilution : 1 µg/mL



For full product information, images and publications, please visit our [website](#).