



SZABO SCANDIC

Part of Europa Biosite

Produktinformation



Forschungsprodukte & Biochemikalien



Zellkultur & Verbrauchsmaterial



Diagnostik & molekulare Diagnostik



Laborgeräte & Service

Weitere Information auf den folgenden Seiten!
See the following pages for more information!



Lieferung & Zahlungsart

siehe unsere [Liefer- und Versandbedingungen](#)

Zuschläge

- Mindermengenzuschlag
- Trockeneiszuschlag
- Gefahrgutzuschlag
- Expressversand

SZABO-SCANDIC HandelsgmbH

Quellenstraße 110, A-1100 Wien

T. +43(0)1 489 3961-0

F. +43(0)1 489 3961-7

mail@szabo-scandic.com

www.szabo-scandic.com

[linkedin.com/company/szaboscandic](https://www.linkedin.com/company/szaboscandic) 

GGT1 antibody

Cat. No. GTX04721

Host	Rabbit
Clonality	Polyclonal
Isotype	IgG
Application	WB
Reactivity	Human, Mouse

Package
400 µl

APPLICATION

Application Note

*Optimal dilutions/concentrations should be determined by the researcher.

Suggested dilution	Recommended dilution
--------------------	----------------------

WB	1:1000
----	--------

Not tested in other applications.

Calculated MW	61 kDa. (Note)
---------------	----------------------------------

PROPERTIES

Form	Liquid
------	--------

Buffer	PBS
--------	-----

Preservative	0.09% Sodium Azide
--------------	--------------------

Storage	Store as concentrated solution. Centrifuge briefly prior to opening vial. For short-term storage (1-2 weeks), store at 4°C. For long-term storage, aliquot and store at -20°C or below. Avoid multiple freeze-thaw cycles.
---------	----------------------------------------------------------------------------------------------------------------------------------------------------------------------------------------------------------------------------

Concentration	Batch dependent (Please refer to the vial label for the specific concentration.)
---------------	----------------------------------------------------------------------------------

Immunogen	A KLH conjugated synthetic peptide between 124-152 amino acids from the N-terminal region of human GGT1.
-----------	----------------------------------------------------------------------------------------------------------

Purification	Protein A purified followed by peptide affinity purification
--------------	--------------------------------------------------------------

Conjugation	Unconjugated
-------------	--------------

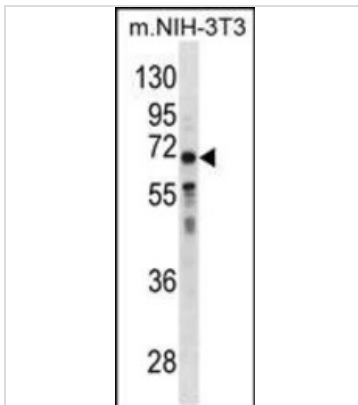
Note	For laboratory research use only. Not for any clinical, therapeutic, or diagnostic use in humans or animals. Not for animal or human consumption.
------	---------------------------------------------------------------------------------------------------------------------------------------------------

Note	Purchasers shall not, and agree not to enable third parties to, analyze, copy, reverse engineer or otherwise attempt to determine the structure or sequence of the product.
------	-----------------------------------------------------------------------------------------------------------------------------------------------------------------------------

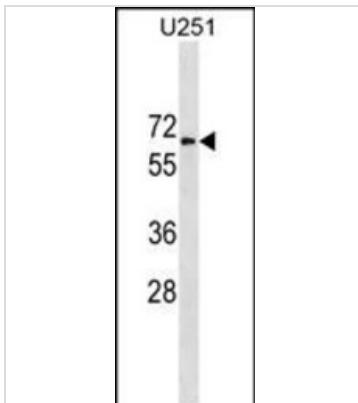


For full product information, images and publications, please visit our [website](#).

DATA IMAGES

**GTX04721 WB Image**

WB analysis of NIH-3T3 whole cell lysate using GTX04721 GGT1 antibody.
Loading : 35 μ g

**GTX04721 WB Image**

WB analysis of U251 whole cell lysate using GTX04721 GGT1 antibody.
Loading : 35 μ g



For full product information, images and publications, please visit our [website](#).