



SZABO SCANDIC

Part of Europa Biosite

Produktinformation



Forschungsprodukte & Biochemikalien



Zellkultur & Verbrauchsmaterial



Diagnostik & molekulare Diagnostik



Laborgeräte & Service

Weitere Information auf den folgenden Seiten!
See the following pages for more information!



Lieferung & Zahlungsart

siehe unsere [Liefer- und Versandbedingungen](#)

Zuschläge

- Mindermengenzuschlag
- Trockeneiszuschlag
- Gefahrgutzuschlag
- Expressversand

SZABO-SCANDIC HandelsgmbH

Quellenstraße 110, A-1100 Wien

T. +43(0)1 489 3961-0

F. +43(0)1 489 3961-7

mail@szabo-scandic.com

www.szabo-scandic.com

[linkedin.com/company/szaboscandic](https://www.linkedin.com/company/szaboscandic) 

FOXP3 antibody

Cat. No. GTX04725

Host	Goat
Clonality	Polyclonal
Isotype	IgG
Application	WB, ICC/IF, IHC-P, FACS, ELISA
Reactivity	Human

Package
100 µg

APPLICATION

Application Note

*Optimal dilutions/concentrations should be determined by the researcher.

Suggested dilution	Recommended dilution
WB	1-3 µg/mL
ICC/IF	10 µg/ml
IHC-P	6-8 µg/mL
FACS	10 µg/mL
ELISA	1:8000

Not tested in other applications.

Calculated MW 47 kDa. ([Note](#))

PROPERTIES

Form	Liquid
Buffer	Tris saline, 0.5% BSA
Preservative	0.02% sodium azide
Storage	Store as concentrated solution. Centrifuge briefly prior to opening vial. For short-term storage (1-2 weeks), store at 4°C. For long-term storage, aliquot and store at -20°C or below. Avoid multiple freeze-thaw cycles.
Concentration	0.5 mg/ml (Please refer to the vial label for the specific concentration.)
Immunogen	Peptide with sequence SQRPSRCSNPTPGP, from the C Terminus of the protein sequence according to NP_054728.2 and NP_0011107849.1.
Purification	From serum
Purity	Purified by ammonium sulphate precipitation followed by antigen-affinity chromatography
Conjugation	Unconjugated



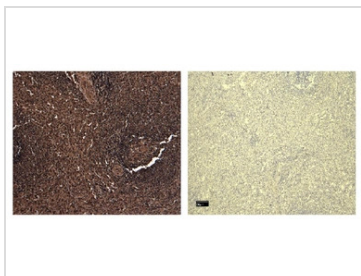
For full product information, images and publications, please visit our [website](#).

For laboratory research use only. Not for any clinical, therapeutic, or diagnostic use in humans or animals. Not for animal or human consumption.

Note

Purchasers shall not, and agree not to enable third parties to, analyze, copy, reverse engineer or otherwise attempt to determine the structure or sequence of the product.

DATA IMAGES



GTX04725 IHC-P Image

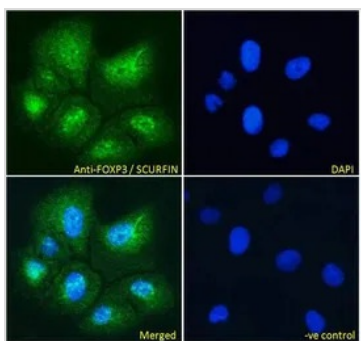
IHC-P analysis of human spleen tissue using GTX04725 FOXP3 antibody.

Left : Primary antibody

Right : No primary antibody

Antigen retrieval : Heat mediated citrate buffer (pH 6.0)

Dilution : 8 µg/mL



GTX04725 ICC/IF Image

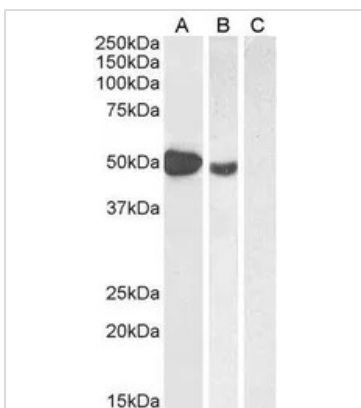
ICC/IF analysis of PFA-fixed U2OS cells using GTX04725 FOXP3 antibody.

Green : Primary antibody

Blue : DAPI

Permeabilization : 0.15% Triton

Dilution : 10 µg/mL



GTX04725 WB Image

WB analysis of various samples using GTX04725 FOXP3 antibody.

Lane A : Human muscle tissue lysate

Lane B : Molt-4 whole cell lysate

Lane C : Human pancreas tissue lysate (negative control)

Dilution : 1 µg/mL



For full product information, images and publications, please visit our [website](#).