



SZABO SCANDIC

Part of Europa Biosite

Produktinformation



Forschungsprodukte & Biochemikalien



Zellkultur & Verbrauchsmaterial



Diagnostik & molekulare Diagnostik



Laborgeräte & Service

Weitere Information auf den folgenden Seiten!
See the following pages for more information!



Lieferung & Zahlungsart

siehe unsere [Liefer- und Versandbedingungen](#)

Zuschläge

- Mindermengenzuschlag
- Trockeneiszuschlag
- Gefahrgutzuschlag
- Expressversand

SZABO-SCANDIC HandelsgmbH

Quellenstraße 110, A-1100 Wien

T. +43(0)1 489 3961-0

F. +43(0)1 489 3961-7

mail@szabo-scandic.com

www.szabo-scandic.com

[linkedin.com/company/szaboscandic](https://www.linkedin.com/company/szaboscandic) 

YAP1 (phospho Ser127) antibody

Cat. No. GTX04728

Host	Rabbit
Clonality	Polyclonal
Isotype	IgG
Application	WB, ICC/IF, IHC-P, ELISA
Reactivity	Human, Mouse, Rat

Package
100 µl

APPLICATION

Application Note

*Optimal dilutions/concentrations should be determined by the researcher.

Suggested dilution	Recommended dilution
WB	1:500-1:2000
ICC/IF	1:100-1:500
IHC-P	1:50-1:200
ELISA	Assay dependent

Not tested in other applications.

Calculated MW 54 kDa. ([Note](#))

PROPERTIES

Form	Liquid
Buffer	PBS, 150 mM NaCl, 50% glycerol
Preservative	0.02% sodium azide
Storage	Store as concentrated solution. Centrifuge briefly prior to opening vial. For short-term storage (1-2 weeks), store at 4°C. For long-term storage, aliquot and store at -20°C or below. Avoid multiple freeze-thaw cycles.
Concentration	1 mg/ml (Please refer to the vial label for the specific concentration.)
Immunogen	A synthesized peptide derived from human YAP1(Accession P46937), corresponding to amino acid residues around phosphorylated Ser127.
Purification	From serum
Purity	Purified by affinity purification via sequential chromatography on phospho-peptide and non-phospho-peptide affinity columns.
Conjugation	Unconjugated

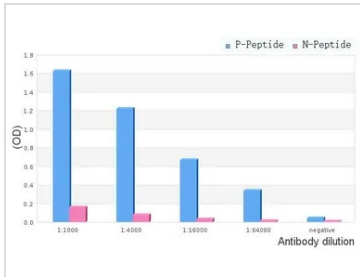


For full product information, images and publications, please visit our [website](#).

For laboratory research use only. Not for any clinical, therapeutic, or diagnostic use in humans or animals. Not for animal or human consumption.

Note
 Purchasers shall not, and agree not to enable third parties to, analyze, copy, reverse engineer or otherwise attempt to determine the structure or sequence of the product.

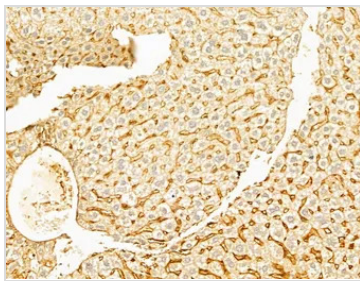
DATA IMAGES



GTX04728 ELISA Image

ELISA analysis of phospho- and non phospho- immunogen peptide using serial diluted GTX04728 YAP1 (phospho Ser127) antibody.

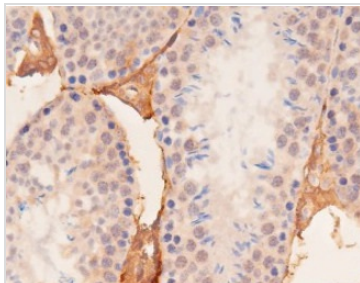
P-peptide : phospho-peptide
 N-peptide : non-phospho-peptide
 Peptides concentration : 1 µg/mL



GTX04728 IHC-P Image

IHC-P analysis of mouse liver tissue using GTX04728 YAP1 (phospho Ser127) antibody.

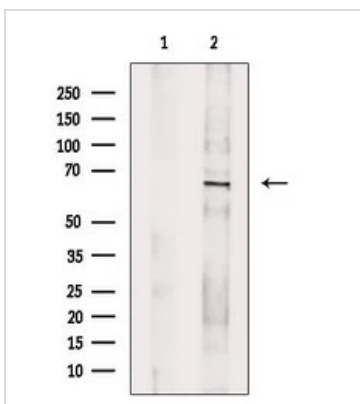
Antigen retrieval : Heat mediated citrate buffer
 Dilution : 1:100



GTX04728 IHC-P Image

IHC-P analysis of mouse kidney tissue using GTX04728 YAP1 (phospho Ser127) antibody.

Antigen retrieval : Heat mediated citrate buffer
 Dilution : 1:100



GTX04728 WB Image

WB analysis of UV-treated MCF-7 whole cell lysate using GTX04728 YAP1 (phospho Ser127) antibody. The lane on the left was treated with blocking peptide.



For full product information, images and publications, please visit our [website](#).