



SZABO SCANDIC

Part of Europa Biosite

Produktinformation



Forschungsprodukte & Biochemikalien



Zellkultur & Verbrauchsmaterial



Diagnostik & molekulare Diagnostik



Laborgeräte & Service

Weitere Information auf den folgenden Seiten!
See the following pages for more information!



Lieferung & Zahlungsart

siehe unsere [Liefer- und Versandbedingungen](#)

Zuschläge

- Mindermengenzuschlag
- Trockeneiszuschlag
- Gefahrgutzuschlag
- Expressversand

SZABO-SCANDIC HandelsgmbH

Quellenstraße 110, A-1100 Wien

T. +43(0)1 489 3961-0

F. +43(0)1 489 3961-7

mail@szabo-scandic.com

www.szabo-scandic.com

[linkedin.com/company/szaboscandic](https://www.linkedin.com/company/szaboscandic) 

Hemoglobin alpha antibody [EG1-8]

Cat. No. GTX04752

| | |
|-------------|---------------------|
| Host | Rabbit |
| Clonality | Monoclonal |
| Isotype | IgG |
| Application | WB, IHC-P, FACS, IP |
| Reactivity | Human, Mouse, Rat |

Package
100 µg

APPLICATION

Application Note

*Optimal dilutions/concentrations should be determined by the researcher.

| Suggested dilution | Recommended dilution |
|--------------------|----------------------|
| WB | 1:500-1:2000 |
| IHC-P | 1:50-1:200 |
| FACS | 1:50 |
| IP | 1:50 |

Not tested in other applications.

Calculated MW 15 kDa. ([Note](#))

PROPERTIES

| | |
|---------------|--|
| Form | Liquid |
| Buffer | PBS, 150 mM NaCl, 50% glycerol, 0.4-0.5 mg/mL BSA |
| Preservative | 0.02% sodium azide |
| Storage | Store as concentrated solution. Centrifuge briefly prior to opening vial. For short-term storage (1-2 weeks), store at 4°C. For long-term storage, aliquot and store at -20°C or below. Avoid multiple freeze-thaw cycles. |
| Concentration | Batch dependent (Please refer to the vial label for the specific concentration.) |
| Immunogen | A synthesized peptide derived from human Hemoglobin subunit alpha. |
| Purification | Purified by affinity chromatography |
| Conjugation | Unconjugated |

Note

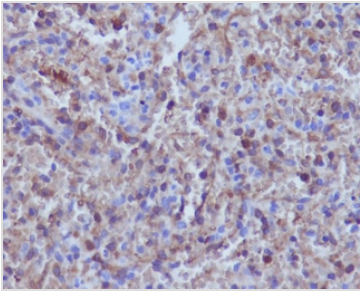
For laboratory research use only. Not for any clinical, therapeutic, or diagnostic use in humans or animals. Not for animal or human consumption.

Purchasers shall not, and agree not to enable third parties to, analyze, copy, reverse engineer or otherwise attempt to determine the structure or sequence of the product.

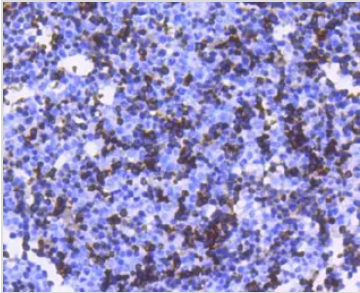


For full product information, images and publications, please visit our [website](#).

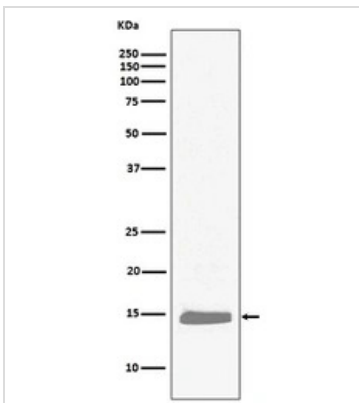
DATA IMAGES

**GTX04752 IHC-P Image**

IHC-P analysis of human spleen tissue using GTX04752 Hemoglobin alpha antibody [EGI-8].

**GTX04752 IHC-P Image**

IHC-P analysis of mouse embryo tissue using GTX04752 Hemoglobin alpha antibody [EGI-8].
Antigen retrieval : Heat mediated Tris-EDTA buffer (pH 8.0)

**GTX04752 WB Image**

WB analysis of K562 whole cell lysate using GTX04752 Hemoglobin alpha antibody [EGI-8].



For full product information, images and publications, please visit our [website](#).