



SZABO SCANDIC

Part of Europa Biosite

Produktinformation



Forschungsprodukte & Biochemikalien



Zellkultur & Verbrauchsmaterial



Diagnostik & molekulare Diagnostik



Laborgeräte & Service

Weitere Information auf den folgenden Seiten!
See the following pages for more information!



Lieferung & Zahlungsart

siehe unsere [Liefer- und Versandbedingungen](#)

Zuschläge

- Mindermengenzuschlag
- Trockeneiszuschlag
- Gefahrgutzuschlag
- Expressversand

SZABO-SCANDIC HandelsgmbH

Quellenstraße 110, A-1100 Wien

T. +43(0)1 489 3961-0

F. +43(0)1 489 3961-7

mail@szabo-scandic.com

www.szabo-scandic.com

[linkedin.com/company/szaboscandic](https://www.linkedin.com/company/szaboscandic) 

EGFR antibody [AEF-5]

Cat. No. GTX04753

| | |
|--------------------|-----------------------------|
| Host | Rabbit |
| Clonality | Monoclonal |
| Isotype | IgG |
| Application | WB, ICC/IF, IHC-P, FACS, IP |
| Reactivity | Human, Mouse, Rat |

Package
100 µg

APPLICATION

Application Note

*Optimal dilutions/concentrations should be determined by the researcher.

| Suggested dilution | Recommended dilution |
|--------------------|----------------------|
| WB | 1:5000-1:10000 |
| ICC/IF | 1:50-1:200 |
| IHC-P | 1:50-1:200 |
| FACS | 1:50 |
| IP | 1:50 |

Not tested in other applications.

Calculated MW 134 kDa. ([Note](#))

PROPERTIES

| | |
|----------------------|--|
| Form | Liquid |
| Buffer | PBS, 150 mM NaCl, 50% glycerol, 0.4-0.5 mg/mL BSA |
| Preservative | 0.02% sodium azide |
| Storage | Store as concentrated solution. Centrifuge briefly prior to opening vial. For short-term storage (1-2 weeks), store at 4°C. For long-term storage, aliquot and store at -20°C or below. Avoid multiple freeze-thaw cycles. |
| Concentration | Batch dependent (Please refer to the vial label for the specific concentration.) |
| Immunogen | A synthesized peptide derived from human EGFR (ErbB 1) |
| Purification | Purified by affinity chromatography |
| Conjugation | Unconjugated |



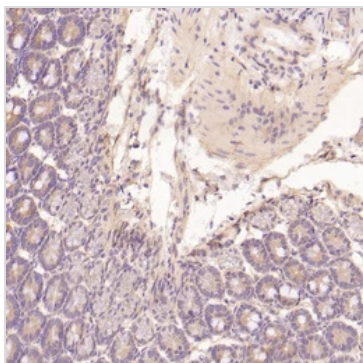
For full product information, images and publications, please visit our [website](#).

For laboratory research use only. Not for any clinical, therapeutic, or diagnostic use in humans or animals. Not for animal or human consumption.

Note

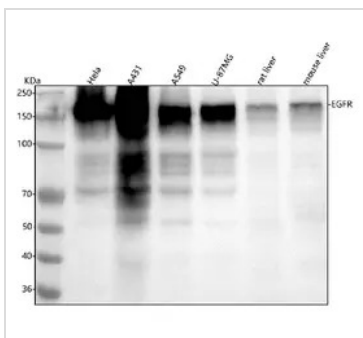
Purchasers shall not, and agree not to enable third parties to, analyze, copy, reverse engineer or otherwise attempt to determine the structure or sequence of the product.

DATA IMAGES

**GTX04753 IHC-P Image**

IHC-P analysis of mouse intestine tissue using GTX04753 EGFR antibody [AEF-5].

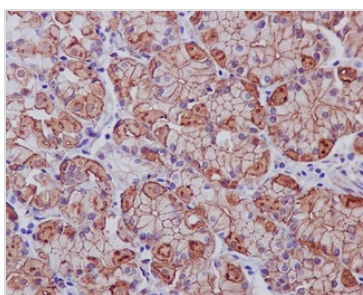
Dilution : 1:100

**GTX04753 WB Image**

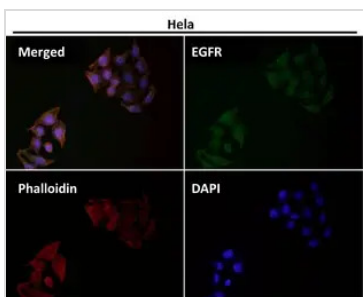
WB analysis of various samples using GTX04753 EGFR antibody [AEF-5].

Loading : 30 µg

Dilution : 1:5000

**GTX04753 IHC-P Image**

IHC-P analysis of human stomach cancer tissue using GTX04753 EGFR antibody [AEF-5].

**GTX04753 ICC/IF Image**

ICC/IF analysis of HeLa cells using GTX04753 EGFR antibody [AEF-5].

Dilution : 1:500



For full product information, images and publications, please visit our [website](#).