



SZABO SCANDIC

Part of Europa Biosite

Produktinformation



Forschungsprodukte & Biochemikalien



Zellkultur & Verbrauchsmaterial



Diagnostik & molekulare Diagnostik



Laborgeräte & Service

Weitere Information auf den folgenden Seiten!
See the following pages for more information!



Lieferung & Zahlungsart

siehe unsere [Liefer- und Versandbedingungen](#)

Zuschläge

- Mindermengenzuschlag
- Trockeneiszuschlag
- Gefahrgutzuschlag
- Expressversand

SZABO-SCANDIC HandelsgmbH

Quellenstraße 110, A-1100 Wien

T. +43(0)1 489 3961-0

F. +43(0)1 489 3961-7

mail@szabo-scandic.com

www.szabo-scandic.com

[linkedin.com/company/szaboscandic](https://www.linkedin.com/company/szaboscandic) 

LRP2 antibody [ARC63830]

Cat. No. GTX04758

Host	Rabbit
Clonality	Monoclonal
Isotype	IgG
Application	WB, IHC-P, FACS
Reactivity	Human, Mouse, Rat

Package
100 µl

APPLICATION

Application Note

*Optimal dilutions/concentrations should be determined by the researcher.

Suggested dilution	Recommended dilution
WB	1:500-1:1000
IHC-P	1:50-1:200
FACS	1:100-1:500

Not tested in other applications.

Calculated MW 522 kDa. ([Note](#))

PROPERTIES

Form	Liquid
Buffer	PBS, 0.05% BSA, 50% glycerol
Preservative	0.05% proclin300
Storage	Store as concentrated solution. Centrifuge briefly prior to opening vial. For short-term storage (1-2 weeks), store at 4°C. For long-term storage, aliquot and store at -20°C or below. Avoid multiple freeze-thaw cycles.
Concentration	Batch dependent (Please refer to the vial label for the specific concentration.)
Immunogen	Recombinant fusion protein containing a sequence corresponding to amino acids 4446-4655 of human intracellular Megalin/LRP2 (NP_004516.2).
Purification	Purified by affinity chromatography
Conjugation	Unconjugated

Note

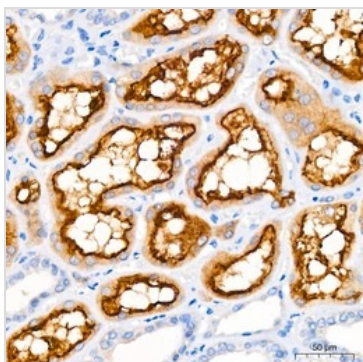
For laboratory research use only. Not for any clinical, therapeutic, or diagnostic use in humans or animals. Not for animal or human consumption.

Purchasers shall not, and agree not to enable third parties to, analyze, copy, reverse engineer or otherwise attempt to determine the structure or sequence of the product.



For full product information, images and publications, please visit our [website](#).

DATA IMAGES

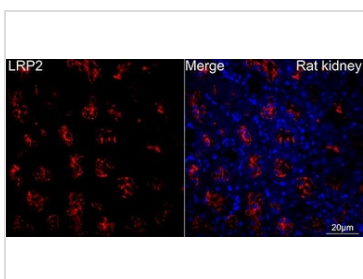


GTX04758 IHC-P Image

IHC-P analysis of human kidney tissue using GTX04758 LRP2 antibody [ARC63830].

Antigen retrieval : 10 mM citrate buffer (pH 6.0) with high pressure

Dilution : 1:200



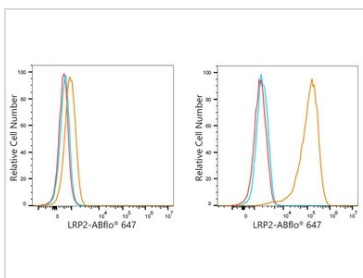
GTX04758 IHC-P Image

IHC-P analysis of rat kidney tissue using GTX04758 LRP2 antibody [ARC63830].

Orange : Primary antibody

Blue : DAPI

Dilution : 1:200



GTX04758 FACS Image

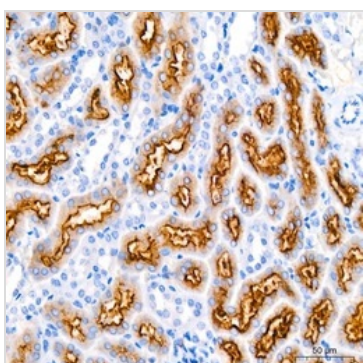
FACS analysis of Reh (left panel) and Caco-2 (right panel) cells using GTX04758 LRP2 antibody [ARC63830].

Orange : Primary antibody

Blue : Isotype control

Red : Unlabeled cells

Dilution : 2 µg/mL for 10⁶ cells



GTX04758 IHC-P Image

IHC-P analysis of mouse kidney tissue using GTX04758 LRP2 antibody [ARC63830].

Antigen retrieval : 10 mM citrate buffer (pH 6.0) with high pressure

Dilution : 1:200



For full product information, images and publications, please visit our [website](#).