



# SZABO SCANDIC

Part of Europa Biosite

## Produktinformation



Forschungsprodukte & Biochemikalien



Zellkultur & Verbrauchsmaterial



Diagnostik & molekulare Diagnostik



Laborgeräte & Service

Weitere Information auf den folgenden Seiten!  
See the following pages for more information!



### Lieferung & Zahlungsart

siehe unsere [Liefer- und Versandbedingungen](#)

### Zuschläge

- Mindermengenzuschlag
- Trockeneiszuschlag
- Gefahrgutzuschlag
- Expressversand

### SZABO-SCANDIC HandelsgmbH

Quellenstraße 110, A-1100 Wien

T. +43(0)1 489 3961-0

F. +43(0)1 489 3961-7

[mail@szabo-scandic.com](mailto:mail@szabo-scandic.com)

[www.szabo-scandic.com](http://www.szabo-scandic.com)

[linkedin.com/company/szaboscandic](https://www.linkedin.com/company/szaboscandic) 

## Estrogen Receptor beta (phospho Ser105) antibody

Cat. No. GTX04765

Host	Rabbit
Clonality	Polyclonal
Isotype	IgG
Application	WB, ICC/IF, ELISA
Reactivity	Human, Mouse

Package  
100 µl

## APPLICATION

## Application Note

\*Optimal dilutions/concentrations should be determined by the researcher.

Suggested dilution	Recommended dilution
WB	1:500-1:2000
ICC/IF	1:100-1:500
ELISA	Assay dependent

Not tested in other applications.

Calculated MW 59 kDa. ([Note](#))

## PROPERTIES

Form	Liquid
Buffer	PBS, 150 mM NaCl, 50% glycerol
Preservative	0.02% sodium azide
Storage	Store as concentrated solution. Centrifuge briefly prior to opening vial. For short-term storage (1-2 weeks), store at 4°C. For long-term storage, aliquot and store at -20°C or below. Avoid multiple freeze-thaw cycles.
Concentration	1 mg/ml (Please refer to the vial label for the specific concentration.)
Immunogen	A synthesized peptide derived from human ESR2(Accession Q92731), corresponding to amino acid residues around phosphorylated Ser105.
Purification	Purified by affinity purification via sequential chromatography on phospho-peptide and non-phospho-peptide affinity columns. From serum
Conjugation	Unconjugated



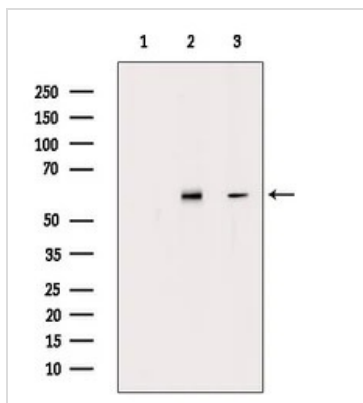
For full product information, images and publications, please visit our [website](#).

For laboratory research use only. Not for any clinical, therapeutic, or diagnostic use in humans or animals. Not for animal or human consumption.

**Note**

Purchasers shall not, and agree not to enable third parties to, analyze, copy, reverse engineer or otherwise attempt to determine the structure or sequence of the product.

DATA IMAGES

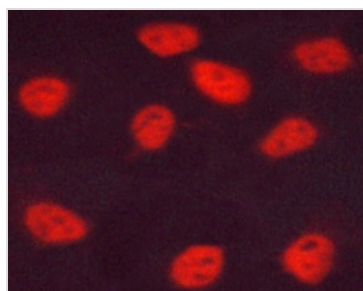


**GTX04765 WB Image**

WB analysis of various samples with heat-shocked treatment using GTX04765 Estrogen Receptor beta (phospho Ser105) antibody. The first lane was treated with blocking peptide.

Lane 1 and 2 : A2780 whole cell lysate

Lane 3 : Raw264.7 whole cell lysate

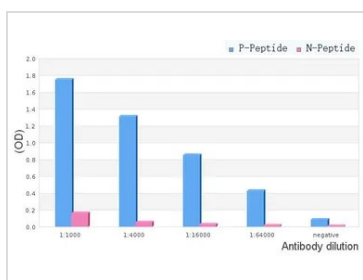


**GTX04765 ICC/IF Image**

ICC/IF analysis of PFA-fixed HUVEC cells using GTX04765 Estrogen Receptor beta (phospho Ser106) antibody.

Permeabilization : 0.1% saponin

Dilution : 1:400



**GTX04765 ELISA Image**

ELISA analysis of phospho- and non phospho- immunogen peptide using serial diluted GTX04765 Estrogen Receptor beta (phospho Ser106) antibody.

P-peptide : phospho-peptide

N-peptide : non-phospho-peptide

Peptides concentration : 1 µg/mL



For full product information, images and publications, please visit our [website](#).