



SZABO SCANDIC

Part of Europa Biosite

Produktinformation



Forschungsprodukte & Biochemikalien



Zellkultur & Verbrauchsmaterial



Diagnostik & molekulare Diagnostik



Laborgeräte & Service

Weitere Information auf den folgenden Seiten!
See the following pages for more information!



Lieferung & Zahlungsart

siehe unsere [Liefer- und Versandbedingungen](#)

Zuschläge

- Mindermengenzuschlag
- Trockeneiszuschlag
- Gefahrgutzuschlag
- Expressversand

SZABO-SCANDIC HandelsgmbH

Quellenstraße 110, A-1100 Wien

T. +43(0)1 489 3961-0

F. +43(0)1 489 3961-7

mail@szabo-scandic.com

www.szabo-scandic.com

[linkedin.com/company/szaboscandic](https://www.linkedin.com/company/szaboscandic) 

Estrogen Receptor beta (phospho Ser87) antibody

Cat. No. GTX04766

Host	Rabbit
Clonality	Polyclonal
Isotype	IgG
Application	WB, ELISA
Reactivity	Human

Package
100 µl

APPLICATION

Application Note

*Optimal dilutions/concentrations should be determined by the researcher.

Suggested dilution	Recommended dilution
WB	1:1000-1:3000
ELISA	Assay dependent

Not tested in other applications.

Calculated MW 59 kDa. ([Note](#))

PROPERTIES

Form	Liquid
Buffer	PBS, 150 mM NaCl, 50% glycerol
Preservative	0.02% sodium azide
Storage	Store as concentrated solution. Centrifuge briefly prior to opening vial. For short-term storage (1-2 weeks), store at 4°C. For long-term storage, aliquot and store at -20°C or below. Avoid multiple freeze-thaw cycles.
Concentration	1 mg/ml (Please refer to the vial label for the specific concentration.)
Immunogen	A synthesized peptide derived from human ESR2(Accession Q92731), corresponding to amino acid residues around phosphorylated Ser87.
Purification	Purified by affinity purification via sequential chromatography on phospho-peptide and non-phospho-peptide affinity columns. From serum
Conjugation	Unconjugated

Note

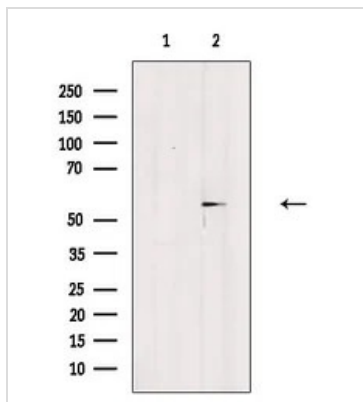
For laboratory research use only. Not for any clinical, therapeutic, or diagnostic use in humans or animals. Not for animal or human consumption.

Purchasers shall not, and agree not to enable third parties to, analyze, copy, reverse engineer or otherwise attempt to determine the structure or sequence of the product.



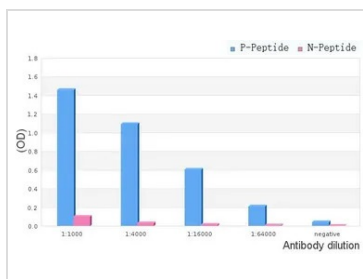
For full product information, images and publications, please visit our [website](#).

DATA IMAGES



GTX04766 WB Image

WB analysis of HepG2 cells with heat-shock treatment using GTX04766 Estrogen Receptor beta (phospho Ser87) antibody. The lane on the left was treated with blocking peptide.



GTX04766 ELISA Image

ELISA analysis of phospho- and non phospho- immunogen peptide using serial diluted GTX04766 Estrogen Receptor beta (phospho Ser87) antibody.

P-peptide : phospho-peptide

N-peptide : non-phospho-peptide

Peptides concentration : 1 µg/mL



For full product information, images and publications, please visit our [website](#).