



# SZABO SCANDIC

Part of Europa Biosite

## Produktinformation



Forschungsprodukte & Biochemikalien



Zellkultur & Verbrauchsmaterial



Diagnostik & molekulare Diagnostik



Laborgeräte & Service

Weitere Information auf den folgenden Seiten!  
See the following pages for more information!



### Lieferung & Zahlungsart

siehe unsere [Liefer- und Versandbedingungen](#)

### Zuschläge

- Mindermengenzuschlag
- Trockeneiszuschlag
- Gefahrgutzuschlag
- Expressversand

### SZABO-SCANDIC HandelsgmbH

Quellenstraße 110, A-1100 Wien

T. +43(0)1 489 3961-0

F. +43(0)1 489 3961-7

[mail@szabo-scandic.com](mailto:mail@szabo-scandic.com)

[www.szabo-scandic.com](http://www.szabo-scandic.com)

[linkedin.com/company/szaboscandic](https://www.linkedin.com/company/szaboscandic) 

## Syndecan 4 antibody

**Cat. No. GTX04782**

<b>Host</b>	Rabbit
<b>Clonality</b>	Polyclonal
<b>Isotype</b>	IgG
<b>Application</b>	WB, IHC-P
<b>Reactivity</b>	Human, Mouse, Rat

Package  
100 µg

## APPLICATION

**Application Note**

\*Optimal dilutions/concentrations should be determined by the researcher.

Suggested dilution	Recommended dilution
WB	0.1-0.5 µg/mL
IHC-P	0.5-1 µg/mL

**Note : By heat**

Not tested in other applications.

**Calculated MW** 22 kDa. ([Note](#))

## PROPERTIES

<b>Form</b>	Liquid
<b>Buffer</b>	5 mg BSA, 0.9 mg NaCl, 0.2 mg Na <sub>2</sub> HPO <sub>4</sub>
<b>Preservative</b>	0.05 mg sodium azide
<b>Storage</b>	Store as concentrated solution. Centrifuge briefly prior to opening vial. For short-term storage (1-2 weeks), store at 4°C. For long-term storage, aliquot and store at -20°C or below. Avoid multiple freeze-thaw cycles.
<b>Concentration</b>	0.5 mg/ml (Please refer to the vial label for the specific concentration.)
<b>Immunogen</b>	A synthetic peptide corresponding to a sequence at the C-terminus of human Syndecan 4 protein.
<b>Purification</b>	Purified by antigen-affinity chromatography
<b>Conjugation</b>	Unconjugated

**Note**

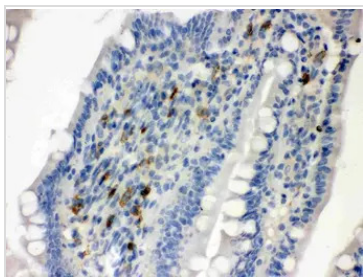
For laboratory research use only. Not for any clinical, therapeutic, or diagnostic use in humans or animals. Not for animal or human consumption.

Purchasers shall not, and agree not to enable third parties to, analyze, copy, reverse engineer or otherwise attempt to determine the structure or sequence of the product.

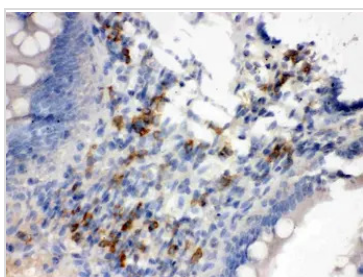


For full product information, images and publications, please visit our [website](#).

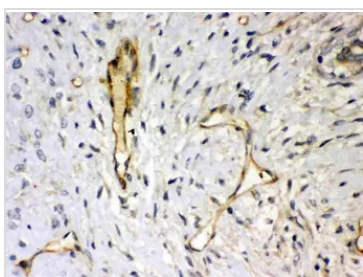
## DATA IMAGES

**GTX04782 IHC-P Image**

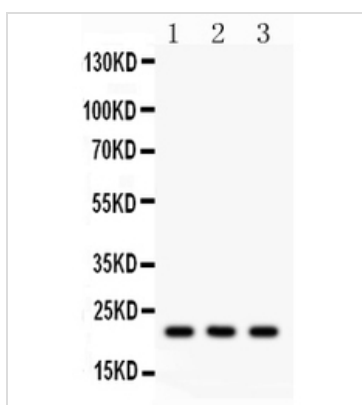
IHC-P analysis of rat intestine tissue using GTX04782 Syndecan 4 antibody.

**GTX04782 IHC-P Image**

IHC-P analysis of mouse intestine tissue using GTX04782 Syndecan 4 antibody.

**GTX04782 IHC-P Image**

IHC-P analysis of human mammary cancer tissue using GTX04782 Syndecan 4 antibody.

**GTX04782 WB Image**

WB analysis of various samples using GTX04782 Syndecan 4 antibody.

Lane 1: MCF-7 whole cell lysate (40  $\mu$ g)

Lane 2 : SW620 whole cell lysate (40  $\mu$ g)

Lane 3 : Rat lung tissue lysate (50  $\mu$ g)

Dilution : 0.5  $\mu$ g/mL



For full product information, images and publications, please visit our [website](#).