



# SZABO SCANDIC

Part of Europa Biosite

## Produktinformation



Forschungsprodukte & Biochemikalien



Zellkultur & Verbrauchsmaterial



Diagnostik & molekulare Diagnostik



Laborgeräte & Service

Weitere Information auf den folgenden Seiten!  
See the following pages for more information!



### Lieferung & Zahlungsart

siehe unsere [Liefer- und Versandbedingungen](#)

### Zuschläge

- Mindermengenzuschlag
- Trockeneiszuschlag
- Gefahrgutzuschlag
- Expressversand

### SZABO-SCANDIC HandelsgmbH

Quellenstraße 110, A-1100 Wien

T. +43(0)1 489 3961-0

F. +43(0)1 489 3961-7

[mail@szabo-scandic.com](mailto:mail@szabo-scandic.com)

[www.szabo-scandic.com](http://www.szabo-scandic.com)

[linkedin.com/company/szaboscandic](https://www.linkedin.com/company/szaboscandic) 

## PAX2 antibody

Cat. No. GTX04786

Host	Rabbit
Clonality	Polyclonal
Isotype	IgG
Application	WB, ICC/IF, IHC-P, FACS
Reactivity	Human, Mouse, Rat, Sheep

Package  
100 µl

## APPLICATION

## Application Note

\*Optimal dilutions/concentrations should be determined by the researcher.

Suggested dilution	Recommended dilution
WB	1:500-1:2000
ICC/IF	Assay dependent
IHC-P	Assay dependent
FACS	1:100

Not tested in other applications.

Calculated MW 45 kDa. ([Note](#))

## PROPERTIES

Form	Liquid
Buffer	0.01M TBS, 1% BSA, 50% Glycerol
Preservative	0.02% Proclin300
Storage	Store as concentrated solution. Centrifuge briefly prior to opening vial. For short-term storage (1-2 weeks), store at 4°C. For long-term storage, aliquot and store at -20°C or below. Avoid multiple freeze-thaw cycles.
Concentration	1 mg/ml (Please refer to the vial label for the specific concentration.)
Immunogen	KLH conjugated synthetic peptide derived from human PAX2.
Purification	Protein A purified
Conjugation	Unconjugated

## Note

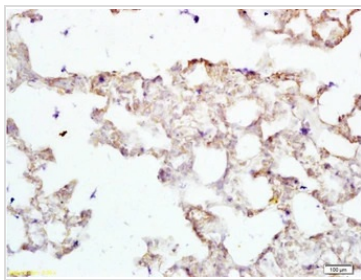
For laboratory research use only. Not for any clinical, therapeutic, or diagnostic use in humans or animals. Not for animal or human consumption.

Purchasers shall not, and agree not to enable third parties to, analyze, copy, reverse engineer or otherwise attempt to determine the structure or sequence of the product.



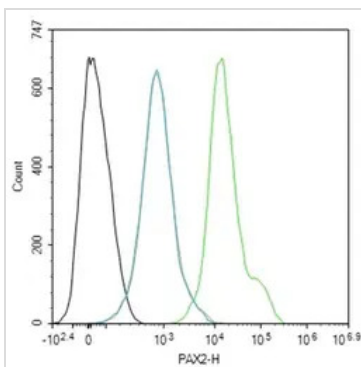
For full product information, images and publications, please visit our [website](#).

## DATA IMAGES

**GTX04786 IHC-P Image**

IHC-P analysis of rat lung tissue using GTX04786 PAX2 antibody.

Dilution : 1:200

**GTX04786 FACS Image**

FACS analysis of 4% PFA-fixed HepG2 cells using GTX04786 PAX2 antibody.

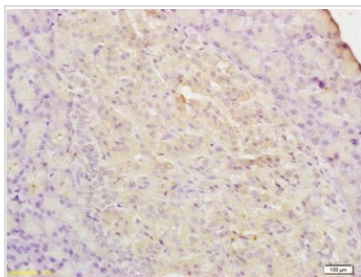
Green : Primary antibody

Blue : Isotype control

Black : Unlabeled samples

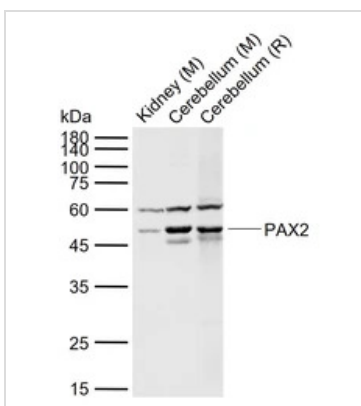
Permeabilization : 90% ice-cold methanol

Dilution : 1:100

**GTX04786 IHC-P Image**

IHC-P analysis of mouse pancreas tissue using GTX04786 PAX2 antibody.

Dilution : 1:200

**GTX04786 WB Image**

WB analysis of various samples using GTX04786 PAX2 antibody.

Lane 1 : Mouse kidney tissue lysate

Lane 2 : Mouse Cerebellum tissue lysate

Lane 3 : Rat Cerebellum tissue lysate

Dilution : 1:1000



For full product information, images and publications, please visit our [website](#).