



SZABO SCANDIC

Part of Europa Biosite

Produktinformation



Forschungsprodukte & Biochemikalien



Zellkultur & Verbrauchsmaterial



Diagnostik & molekulare Diagnostik



Laborgeräte & Service

Weitere Information auf den folgenden Seiten!
See the following pages for more information!



Lieferung & Zahlungsart

siehe unsere [Liefer- und Versandbedingungen](#)

Zuschläge

- Mindermengenzuschlag
- Trockeneiszuschlag
- Gefahrgutzuschlag
- Expressversand

SZABO-SCANDIC HandelsgmbH

Quellenstraße 110, A-1100 Wien

T. +43(0)1 489 3961-0

F. +43(0)1 489 3961-7

mail@szabo-scandic.com

www.szabo-scandic.com

[linkedin.com/company/szaboscandic](https://www.linkedin.com/company/szaboscandic) 

NCAM antibody

Cat. No. GTX04796

Host	Rabbit
Clonality	Polyclonal
Isotype	IgG
Application	WB, ICC/IF, IHC-Fr, FACS, LCI
Reactivity	Human, Mouse, Rat

Package
50 µl

APPLICATION

Application Note

*Optimal dilutions/concentrations should be determined by the researcher.

Suggested dilution	Recommended dilution
WB	Assay dependent
ICC/IF	Assay dependent
IHC-Fr	Assay dependent
FACS	Assay dependent
LCI	Assay dependent

Not tested in other applications.

Calculated MW 95 kDa. ([Note](#))

PROPERTIES

Form	Liquid
Buffer	PBS, 1% BSA
Preservative	0.05% Sodium Azide
Storage	Store as concentrated solution. Centrifuge briefly prior to opening vial. For short-term storage (1-2 weeks), store at 4°C. For long-term storage, aliquot and store at -20°C or below. Avoid multiple freeze-thaw cycles.
Concentration	0.85 mg/ml (Please refer to the vial label for the specific concentration.)
Immunogen	Peptide (C)DEKHIFSDDSSSELTIR, corresponding to amino acid residues 261-276 of rat NCAM-1 (Accession P13596). Extracellular, N-terminus.
Purification	Purified by antigen-affinity chromatography
Conjugation	Unconjugated



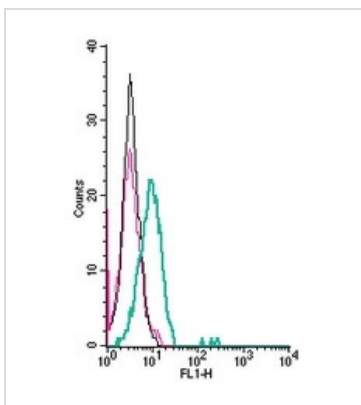
For full product information, images and publications, please visit our [website](#).

For laboratory research use only. Not for any clinical, therapeutic, or diagnostic use in humans or animals. Not for animal or human consumption.

Note

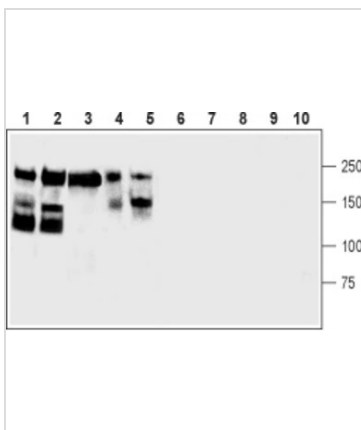
Purchasers shall not, and agree not to enable third parties to, analyze, copy, reverse engineer or otherwise attempt to determine the structure or sequence of the product.

DATA IMAGES



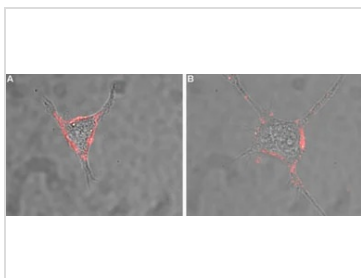
GTX04796 FACS Image

FACS analysis of NK-92MI cells using GTX04796 NCAM antibody.
 Green : Primary antibody
 Red : Secondary antibody only
 Black : Unlabeled cells
 Dilution : 5 µg/ml



GTX04796 WB Image

WB analysis of various samples using GTX04796 NCAM antibody prior incubated with (Lane 6-10) or without (Lane 1-5) blocking peptide.
 Lane 1 and 6 : Mouse brain tissue lysate
 Lane 2 and 7 : Rat cerebellum tissue lysate
 Lane 3 and 8 : Rat eye tissue lysate
 Lane 4 and 9 : SH-SY5Y whole cell lysate
 Lane 5 and 10 : PC12 whole cell lysate
 Dilution :
 Lane 1-3 & 6-8 : 1:400
 Lane 4-5 & 9-10 : 1:200



GTX04796 ICC/IF Image

ICC/IF analysis of PC12 cells using GTX04796 NCAM antibody.
 Extracellular staining of cells merged with a live view of the cells.
 Dilution : 1:100



For full product information, images and publications, please visit our [website](#).