



# SZABO SCANDIC

Part of Europa Biosite

## Produktinformation



Forschungsprodukte & Biochemikalien



Zellkultur & Verbrauchsmaterial



Diagnostik & molekulare Diagnostik



Laborgeräte & Service

Weitere Information auf den folgenden Seiten!  
See the following pages for more information!



### Lieferung & Zahlungsart

siehe unsere [Liefer- und Versandbedingungen](#)

### Zuschläge

- Mindermengenzuschlag
- Trockeneiszuschlag
- Gefahrgutzuschlag
- Expressversand

### SZABO-SCANDIC HandelsgmbH

Quellenstraße 110, A-1100 Wien

T. +43(0)1 489 3961-0

F. +43(0)1 489 3961-7

[mail@szabo-scandic.com](mailto:mail@szabo-scandic.com)

[www.szabo-scandic.com](http://www.szabo-scandic.com)

[linkedin.com/company/szaboscandic](https://www.linkedin.com/company/szaboscandic) 

## BACE1 antibody [N1C2]

**Cat No. GTX103757**

<b>Host</b>	Rabbit
<b>Clonality</b>	Polyclonal
<b>Isotype</b>	IgG
<b>Application</b>	IHC-P
<b>Reactivity</b>	Human, Mouse

Reference ( 2 )

Package

100 µl, 25 µl

## APPLICATION

**Application Note**

\*Optimal dilutions/concentrations should be determined by the researcher.

Suggested dilution	Dilution
IHC-P	1:1000

Not tested in other applications.

**Calculated MW** 56 kDa. ( [Note](#) )

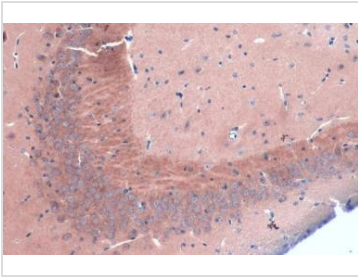
## PROPERTIES

<b>Form</b>	Liquid
<b>Buffer</b>	1XPBS, 20% Glycerol (pH7). 0.025% ProClin 300 was added as a preservative.
<b>Storage</b>	Store as concentrated solution. Centrifuge briefly prior to opening vial. For short-term storage (1-2 weeks), store at 4°C. For long-term storage, aliquot and store at -20°C or below. Avoid multiple freeze-thaw cycles.
<b>Concentration</b>	1.85 mg/ml (Please refer to the vial label for the specific concentration.)
<b>Immunogen</b>	Recombinant protein encompassing a sequence within the center region of human BACE1. The exact sequence is proprietary.
<b>Purification</b>	Purified by antigen-affinity chromatography.
<b>Conjugation</b>	Unconjugated
<b>Note</b>	For laboratory use only. Not for any clinical, therapeutic, or diagnostic use in humans or animals. Not for animal or human consumption.



For full product information, images and publications, please visit our [website](#).

## DATA IMAGES

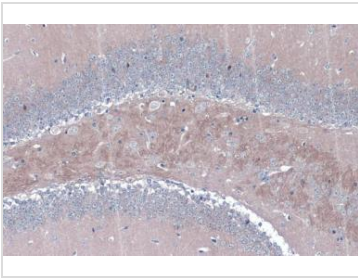
**GTX103757 IHC-P Image**

BACE1 antibody [N1C2] detects BACE1 protein at cytoplasm by immunohistochemical analysis.

Sample: Paraffin-embedded mouse hippocampus.

BACE1 stained by BACE1 antibody [N1C2] (GTX103757) diluted at 1:1000.

Antigen Retrieval: Citrate buffer, pH 6.0, 15 min

**GTX103757 IHC-P Image**

BACE1 antibody [N1C2] detects BACE1 protein at cytoplasm by immunohistochemical analysis.

Sample: Paraffin-embedded mouse hippocampus.

BACE1 stained by BACE1 antibody [N1C2] (GTX103757) diluted at 1:500.

Antigen Retrieval: Citrate buffer, pH 6.0, 15 min



For full product information, images and publications, please visit our [website](#).