



# SZABO SCANDIC

Part of Europa Biosite

## Produktinformation



Forschungsprodukte & Biochemikalien



Zellkultur & Verbrauchsmaterial



Diagnostik & molekulare Diagnostik



Laborgeräte & Service

Weitere Information auf den folgenden Seiten!  
See the following pages for more information!



### Lieferung & Zahlungsart

siehe unsere [Liefer- und Versandbedingungen](#)

### Zuschläge

- Mindermengenzuschlag
- Trockeneiszuschlag
- Gefahrgutzuschlag
- Expressversand

### SZABO-SCANDIC HandelsgmbH

Quellenstraße 110, A-1100 Wien

T. +43(0)1 489 3961-0

F. +43(0)1 489 3961-7

[mail@szabo-scandic.com](mailto:mail@szabo-scandic.com)

[www.szabo-scandic.com](http://www.szabo-scandic.com)

[linkedin.com/company/szaboscandic](https://www.linkedin.com/company/szaboscandic) 

## Human ARL11 protein, His tag

## Cat. No. GTX109104-pro

|         |       |
|---------|-------|
| Species | Human |
|---------|-------|

## Package

100 µg, 25 µg

## PROPERTIES

|      |        |
|------|--------|
| Form | Liquid |
|------|--------|

|        |               |
|--------|---------------|
| Buffer | PBS, 0.1% SDS |
|--------|---------------|

|              |                 |
|--------------|-----------------|
| Preservative | No Preservative |
|--------------|-----------------|

|         |   |
|---------|---|
| Storage | Store as concentrated solution. Centrifuge briefly prior to opening vial. Aliquot and store at -20°C or below. Avoid multiple freeze-thaw cycles. |
|---------|---|

|               |  |
|---------------|--|
| Concentration | Batch dependent (Please refer to the vial label for the specific concentration.) |
|---------------|--|

|                 |  |
|-----------------|--|
| Region/Sequence | N-terminal His tagged full length protein of NP_612459 |
|-----------------|--|

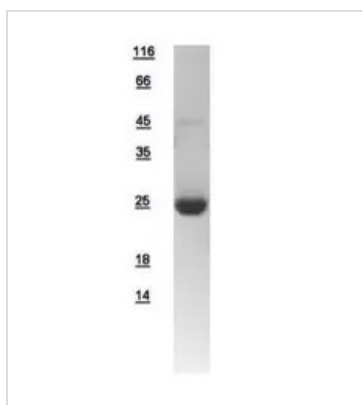
|                   |         |
|-------------------|---------|
| Expression System | E. coli |
|-------------------|---------|

|        |      |
|--------|------|
| Purity | >95% |
|--------|------|

|             |              |
|-------------|--------------|
| Conjugation | Unconjugated |
|-------------|--------------|

|      |   |
|------|---|
| Note | For In vitro laboratory use only. Not for any clinical, therapeutic, or diagnostic use in humans or animals. Not for animal or human consumption. |
|------|---|

## DATA IMAGES



## GTX109104-pro Image

10µg of GTX109104-pro ARL11 recombinant protein analyzed using SDS-PAGE and stained with coomassie blue and captured by black and white camera.



For full product information, images and publications, please visit our [website](#).