



# SZABO SCANDIC

Part of Europa Biosite

## Produktinformation



Forschungsprodukte & Biochemikalien



Zellkultur & Verbrauchsmaterial



Diagnostik & molekulare Diagnostik



Laborgeräte & Service

Weitere Information auf den folgenden Seiten!  
See the following pages for more information!



### Lieferung & Zahlungsart

siehe unsere [Liefer- und Versandbedingungen](#)

### Zuschläge

- Mindermengenzuschlag
- Trockeneiszuschlag
- Gefahrgutzuschlag
- Expressversand

### SZABO-SCANDIC HandelsgmbH

Quellenstraße 110, A-1100 Wien

T. +43(0)1 489 3961-0

F. +43(0)1 489 3961-7

[mail@szabo-scandic.com](mailto:mail@szabo-scandic.com)

[www.szabo-scandic.com](http://www.szabo-scandic.com)

[linkedin.com/company/szaboscandic](https://www.linkedin.com/company/szaboscandic) 

## Human BCL10 protein, His tag

## Cat. No. GTX109159-pro

Species	Human
---------	-------

## Package

100 µg, 25 µg

## PROPERTIES

Form	Liquid
------	--------

Buffer	PBS, 0.1% SDS
--------	---------------

Preservative	No Preservative
--------------	-----------------

Storage	Store as concentrated solution. Centrifuge briefly prior to opening vial. Aliquot and store at -20°C or below. Avoid multiple freeze-thaw cycles.
---------	---

Concentration	Batch dependent (Please refer to the vial label for the specific concentration.)
---------------	--

Region/Sequence	N-terminal His tagged full length protein of NP_003912
-----------------	--

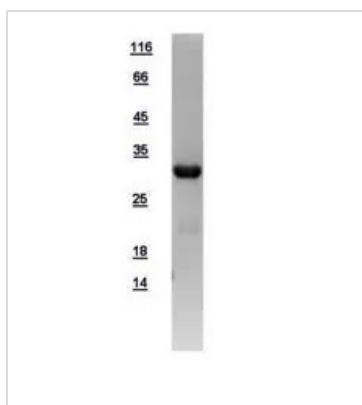
Expression System	E. coli
-------------------	---------

Purity	>95%
--------	------

Conjugation	Unconjugated
-------------	--------------

Note	For In vitro laboratory use only. Not for any clinical, therapeutic, or diagnostic use in humans or animals. Not for animal or human consumption.
------	---

## DATA IMAGES



## GTX109159-pro Image

10µg of GTX109159-pro BCL10 recombinant protein analyzed using SDS-PAGE and stained with coomassie blue and captured by black and white camera.



For full product information, images and publications, please visit our [website](#).