



# SZABO SCANDIC

Part of Europa Biosite

## Produktinformation



Forschungsprodukte & Biochemikalien



Zellkultur & Verbrauchsmaterial



Diagnostik & molekulare Diagnostik



Laborgeräte & Service

Weitere Information auf den folgenden Seiten!  
See the following pages for more information!



### Lieferung & Zahlungsart

siehe unsere [Liefer- und Versandbedingungen](#)

### Zuschläge

- Mindermengenzuschlag
- Trockeneiszuschlag
- Gefahrgutzuschlag
- Expressversand

### SZABO-SCANDIC HandelsgmbH

Quellenstraße 110, A-1100 Wien

T. +43(0)1 489 3961-0

F. +43(0)1 489 3961-7

[mail@szabo-scandic.com](mailto:mail@szabo-scandic.com)

[www.szabo-scandic.com](http://www.szabo-scandic.com)

[linkedin.com/company/szaboscandic](https://www.linkedin.com/company/szaboscandic) 

## Human ANP protein, GST tag

## Cat. No. GTX109255-pro

<b>Application</b>	ELISA, Sandwich ELISA
<b>Species</b>	Human

## Package

100 µg, 25 µg

## APPLICATION

## Application Note

Recommended antibody pairs for sandwich ELISA:

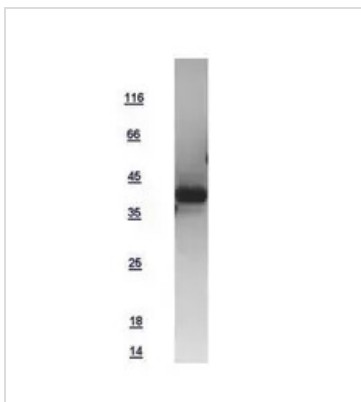
Capture: GTX634219, Detection: GTX639071

## PROPERTIES

<b>Form</b>	Liquid
<b>Buffer</b>	PBS, 0.1% SDS
<b>Preservative</b>	No Preservative
<b>Storage</b>	Store as concentrated solution. Centrifuge briefly prior to opening vial. Aliquot and store at -20°C or below. Avoid multiple freeze-thaw cycles.
<b>Concentration</b>	Batch dependent (Please refer to the vial label for the specific concentration.)
<b>Region/Sequence</b>	N-terminal GST tagged full length protein of NP_006163
<b>Expression System</b>	E. coli
<b>Purity</b>	>95%
<b>Conjugation</b>	Unconjugated
<b>Note</b>	For In vitro laboratory use only. Not for any clinical, therapeutic, or diagnostic use in humans or animals. Not for animal or human consumption.

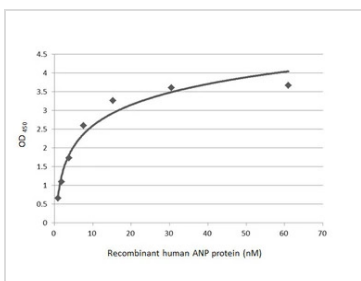
For full product information, images and publications, please visit our [website](#).

DATA IMAGES



**GTX109255-pro Image**

10µg of GTX109255-pro ANP recombinant protein analyzed using SDS-PAGE and stained with coomassie blue and captured by black and white camera.



**GTX109255-pro ELISA Image**

Sandwich ELISA detection of recombinant Human ANP protein, GST tag (GTX109255-pro) using antibodies as below.

**Capture:** ANP antibody [GT1068] (GTX634219) (5 µg/mL)

**Detection:** ANP antibody [HL2617] (GTX639071) (1 µg/mL)



For full product information, images and publications, please visit our [website](#).