



# SZABO SCANDIC

Part of Europa Biosite

## Produktinformation



Forschungsprodukte & Biochemikalien



Zellkultur & Verbrauchsmaterial



Diagnostik & molekulare Diagnostik



Laborgeräte & Service

Weitere Information auf den folgenden Seiten!  
See the following pages for more information!



### Lieferung & Zahlungsart

siehe unsere [Liefer- und Versandbedingungen](#)

### Zuschläge

- Mindermengenzuschlag
- Trockeneiszuschlag
- Gefahrgutzuschlag
- Expressversand

### SZABO-SCANDIC HandelsgmbH

Quellenstraße 110, A-1100 Wien

T. +43(0)1 489 3961-0

F. +43(0)1 489 3961-7

[mail@szabo-scandic.com](mailto:mail@szabo-scandic.com)

[www.szabo-scandic.com](http://www.szabo-scandic.com)

[linkedin.com/company/szaboscandic](https://www.linkedin.com/company/szaboscandic) 

## CD3 epsilon antibody [CD3-12]

Cat No. GTX11089

<b>Host</b>	Rat
<b>Clonality</b>	Monoclonal
<b>Isotype</b>	IgG1
<b>Application</b>	WB, ICC/IF, IHC-P, IHC-Fr, FACS
<b>Reactivity</b>	Human, Mouse, Rabbit, Bovine, Cat, Dog, Chicken, Pig, Alpaca, Amazon Parrot, Bullfrog, Cynomolgus monkey, Duck, Great horned owl ( <i>Bubo virginianus</i> ), Harbour Porpoise, Horse, Koala, Raccoon, Rhesus Monkey, Sea Lion, Spotted Hyena, Xenopus

Reference ( 2 )  
 Package  
 100 µg

## PRODUCT

**Summary** Rat monoclonal [CD3 - 12] to CD3

## APPLICATION

## Application Note

\*Optimal dilutions/concentrations should be determined by the researcher.

Suggested dilution	Dilution
WB	Assay dependent
ICC/IF	Assay dependent
IHC-P	Assay dependent
IHC-Fr	Assay dependent
FACS	Assay dependent

Not tested in other applications.

**Calculated MW** 23 kDa. ( [Note](#) )

**Specificity/Sensitivity** This antibody has been specifically raised against an epitope within the epsilon peptide chain, highly conserved among species clone CD3-12 has a very broad species crossreactivity for the CD3 marker.

## PROPERTIES

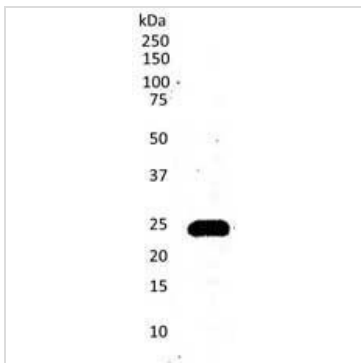
<b>Form</b>	Liquid
<b>Buffer</b>	PBS, 0.09% Sodium Azide
<b>Storage</b>	Store as concentrated solution. Centrifuge briefly prior to opening vial. For short-term storage (1-2 weeks), store at 4°C. For long-term storage, aliquot and store at -20°C or below. Avoid multiple freeze-thaw cycles.
<b>Concentration</b>	1 mg/ml (Please refer to the vial label for the specific concentration.)



For full product information, images and publications, please visit our [website](#).

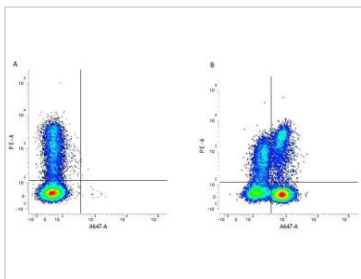
<b>Immunogen</b>	Synthetic peptide sequence derived from cytoplasmic epitope of CD3 (Glu-Arg-Pro-Pro-Pro-Val-Pro-Asn-Pro-Asp-Tyr-Glu-Pro-Cys) (ERPPVPNPDYEPC)
<b>Purification</b>	Protein G purified From tissue culture supernatant
<b>Conjugation</b>	Unconjugated
<b>Note</b>	For laboratory use only. Not for any clinical, therapeutic, or diagnostic use in humans or animals. Not for animal or human consumption.

DATA IMAGES



**GTX11089 WB Image**

WB analysis of Jurkat cell lysate using GTX11089 CD3 antibody [CD3-12].

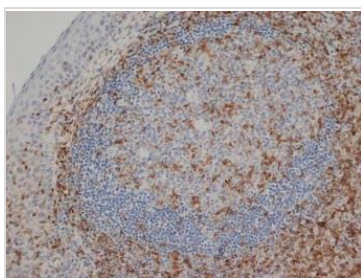


**GTX11089 FACS Image**

FACS analysis of red cell lysed human peripheral blood gated on leukocytes using GTX11089 CD3 antibody [CD3-12].

Figure A : RPE conjugated Mouse anti Human CD8 and Alexa Fluor 647 conjugated Rat IgG1 isotype control.

Figure B : RPE conjugated Mouse anti Human CD8 and Alexa Fluor 647 conjugated Rat anti Human CD3 (GTX11089).



**GTX11089 IHC-P Image**

IHC-P analysis of human tonsil tissue using GTX11089 CD3 antibody [CD3-12].

Heat mediated antigen retrieval using EDTA buffer pH9.0.



For full product information, images and publications, please visit our [website](#).