



SZABO SCANDIC

Part of Europa Biosite

Produktinformation



Forschungsprodukte & Biochemikalien



Zellkultur & Verbrauchsmaterial



Diagnostik & molekulare Diagnostik



Laborgeräte & Service

Weitere Information auf den folgenden Seiten!
See the following pages for more information!



Lieferung & Zahlungsart

siehe unsere [Liefer- und Versandbedingungen](#)

Zuschläge

- Mindermengenzuschlag
- Trockeneiszuschlag
- Gefahrgutzuschlag
- Expressversand

SZABO-SCANDIC HandelsgmbH

Quellenstraße 110, A-1100 Wien

T. +43(0)1 489 3961-0

F. +43(0)1 489 3961-7

mail@szabo-scandic.com

www.szabo-scandic.com

[linkedin.com/company/szaboscandic](https://www.linkedin.com/company/szaboscandic) 

Human ARHI protein, His tag

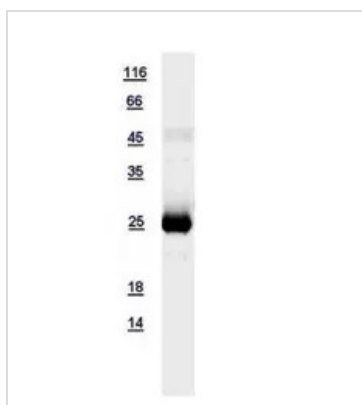
Cat. No. GTX111997-pro**Species** Human**Package**

100 µg, 25 µg

PROPERTIES

Form Liquid**Buffer** PBS, 0.1% SDS**Preservative** No Preservative**Storage** Store as concentrated solution. Centrifuge briefly prior to opening vial. Aliquot and store at -20°C or below. Avoid multiple freeze-thaw cycles.**Concentration** Batch dependent (Please refer to the vial label for the specific concentration.)**Region/Sequence** N-terminal His tagged full length protein of NP_004666**Expression System** E. coli**Purity** >95%**Conjugation** Unconjugated**Note** For In vitro laboratory use only. Not for any clinical, therapeutic, or diagnostic use in humans or animals. Not for animal or human consumption.

DATA IMAGES

**GTX111997-pro Image**

10µg of GTX111997-pro ARHI recombinant protein analyzed using SDS-PAGE and stained with coomassie blue and captured by black and white camera.



For full product information, images and publications, please visit our [website](#).