



SZABO SCANDIC

Part of Europa Biosite

Produktinformation



Forschungsprodukte & Biochemikalien



Zellkultur & Verbrauchsmaterial



Diagnostik & molekulare Diagnostik



Laborgeräte & Service

Weitere Information auf den folgenden Seiten!
See the following pages for more information!



Lieferung & Zahlungsart

siehe unsere [Liefer- und Versandbedingungen](#)

Zuschläge

- Mindermengenzuschlag
- Trockeneiszuschlag
- Gefahrgutzuschlag
- Expressversand

SZABO-SCANDIC HandelsgmbH

Quellenstraße 110, A-1100 Wien

T. +43(0)1 489 3961-0

F. +43(0)1 489 3961-7

mail@szabo-scandic.com

www.szabo-scandic.com

[linkedin.com/company/szaboscandic](https://www.linkedin.com/company/szaboscandic) 

Human RPL26 protein, His tag

Cat. No. GTX118577-pro

Species	Human
---------	-------

Package

100 µg, 25 µg

PROPERTIES

Form	Liquid
------	--------

Buffer	PBS, 0.1% SDS
--------	---------------

Preservative	No Preservative
--------------	-----------------

Storage	Store as concentrated solution. Centrifuge briefly prior to opening vial. Aliquot and store at -20°C or below. Avoid multiple freeze-thaw cycles.
---------	---

Concentration	Batch dependent (Please refer to the vial label for the specific concentration.)
---------------	--

Region/Sequence	N-terminal His tagged full length protein of AAH71664
-----------------	---

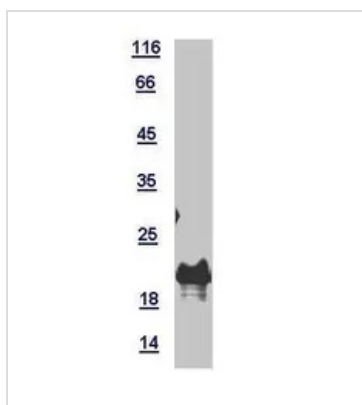
Expression System	E. coli
-------------------	---------

Purity	>90%
--------	------

Conjugation	Unconjugated
-------------	--------------

Note	For In vitro laboratory use only. Not for any clinical, therapeutic, or diagnostic use in humans or animals. Not for animal or human consumption.
------	---

DATA IMAGES



GTX118577-pro Image

10µg of GTX118577-pro ribosomal L26 recombinant protein analyzed using SDS-PAGE and stained with coomassie blue and captured by black and white camera.



For full product information, images and publications, please visit our [website](#).