



SZABO SCANDIC

Part of Europa Biosite

Produktinformation



Forschungsprodukte & Biochemikalien



Zellkultur & Verbrauchsmaterial



Diagnostik & molekulare Diagnostik



Laborgeräte & Service

Weitere Information auf den folgenden Seiten!
See the following pages for more information!



Lieferung & Zahlungsart

siehe unsere [Liefer- und Versandbedingungen](#)

Zuschläge

- Mindermengenzuschlag
- Trockeneiszuschlag
- Gefahrgutzuschlag
- Expressversand

SZABO-SCANDIC HandelsgmbH

Quellenstraße 110, A-1100 Wien

T. +43(0)1 489 3961-0

F. +43(0)1 489 3961-7

mail@szabo-scandic.com

www.szabo-scandic.com

[linkedin.com/company/szaboscandic](https://www.linkedin.com/company/szaboscandic) 

Cox4i1 antibody

Cat. No. GTX124479

Host	Rabbit
Clonality	Polyclonal
Isotype	IgG
Application	WB, IHC-P, IHC-Wm
Reactivity	Zebrafish

Reference (1)
 Package
 100 µl, 25 µl

APPLICATION

Application Note

*Optimal dilutions/concentrations should be determined by the researcher.

Suggested dilution	Recommended dilution
WB	1:500-1:3000
IHC-P	1:100-1:1000
IHC-Wm	1:100-1:500

Not tested in other applications.

PROPERTIES

Form	Liquid
Buffer	0.1M Tris-Glycine (pH7), 10% Glycerol
Preservative	0.01% Thimerosal
Storage	Store as concentrated solution. Centrifuge briefly prior to opening vial. For short-term storage (1-2 weeks), store at 4°C. For long-term storage, aliquot and store at -20°C or below. Avoid multiple freeze-thaw cycles.
Concentration	0.38 mg/ml (Please refer to the vial label for the specific concentration.)
Immunogen	The immunogen used to generate this antibody corresponds to zebrafish Cox4i1
Purification	Purified by antigen-affinity chromatography.
Conjugation	Unconjugated

Note

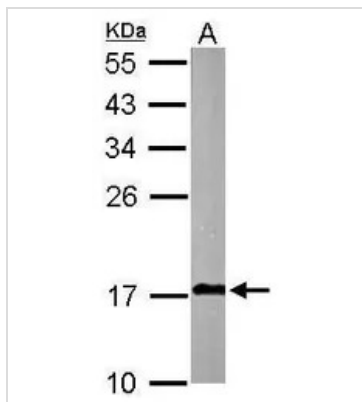
For laboratory research use only. Not for any clinical, therapeutic, or diagnostic use in humans or animals. Not for animal or human consumption.

Purchasers shall not, and agree not to enable third parties to, analyze, copy, reverse engineer or otherwise attempt to determine the structure or sequence of the product.



For full product information, images and publications, please visit our [website](#).

DATA IMAGES

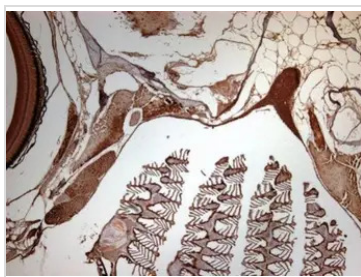
**GTX124479 WB Image**

Sample (10 ug of whole cell lysate)

A: Adult zebrafish

12% SDS PAGE

GTX124479 diluted at 1:1000

**GTX124479 IHC-P Image**

Immunohistochemical analysis of paraffin-embedded zebrafish tissue, using cox4i1 (GTX124479) antibody at 1:300 dilution.

**GTX124479 IHC-Wm Image**

Immunohistochemical analysis (whole mount) of zebrafish embryo, using cox4i1(GTX124479) antibody at 1:200 dilution.



For full product information, images and publications, please visit our [website](#).