



# SZABO SCANDIC

Part of Europa Biosite

## Produktinformation



Forschungsprodukte & Biochemikalien



Zellkultur & Verbrauchsmaterial



Diagnostik & molekulare Diagnostik



Laborgeräte & Service

Weitere Information auf den folgenden Seiten!  
See the following pages for more information!



### Lieferung & Zahlungsart

siehe unsere [Liefer- und Versandbedingungen](#)

### Zuschläge

- Mindermengenzuschlag
- Trockeneiszuschlag
- Gefahrgutzuschlag
- Expressversand

### SZABO-SCANDIC HandelsgmbH

Quellenstraße 110, A-1100 Wien

T. +43(0)1 489 3961-0

F. +43(0)1 489 3961-7

[mail@szabo-scandic.com](mailto:mail@szabo-scandic.com)

[www.szabo-scandic.com](http://www.szabo-scandic.com)

[linkedin.com/company/szaboscandic](https://www.linkedin.com/company/szaboscandic) 

## Pcna antibody

**Cat. No. GTX124496**

<b>Host</b>	Rabbit
<b>Clonality</b>	Polyclonal
<b>Isotype</b>	IgG
<b>Application</b>	WB, IHC-P, IHC-Fr, IHC-Wm
<b>Reactivity</b>	Zebrafish, Japanese Medaka, Nothobranchius furzeri

Reference ( 21 )

★★★★☆ Review ( 6 )

Package

100 µl, 25 µl

## APPLICATION

**Application Note**

\*Optimal dilutions/concentrations should be determined by the researcher.

Suggested dilution	Recommended dilution
WB	1:500-1:3000
IHC-P	1:100-1:1000
IHC-Fr	Assay dependent
IHC-Wm	1:50-1:500

Not tested in other applications.

**Calculated MW** 29 kDa. ( [Note](#) )

## PROPERTIES

<b>Form</b>	Liquid
<b>Buffer</b>	1XPBS pH7, 1% BSA, 20% Glycerol
<b>Preservative</b>	0.025% ProClin 300
<b>Storage</b>	Store as concentrated solution. Centrifuge briefly prior to opening vial. For short-term storage (1-2 weeks), store at 4°C. For long-term storage, aliquot and store at -20°C or below. Avoid multiple freeze-thaw cycles.
<b>Concentration</b>	0.41 mg/ml (Please refer to the vial label for the specific concentration.)
<b>Immunogen</b>	The immunogen used to generate this antibody corresponds to zebrafish Pcna
<b>Purification</b>	Purified by antigen-affinity chromatography.
<b>Conjugation</b>	Unconjugated

**Note**

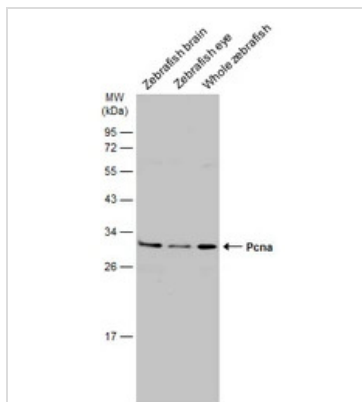
For laboratory research use only. Not for any clinical, therapeutic, or diagnostic use in humans or animals. Not for animal or human consumption.

Purchasers shall not, and agree not to enable third parties to, analyze, copy, reverse engineer or otherwise attempt to determine the structure or sequence of the product.

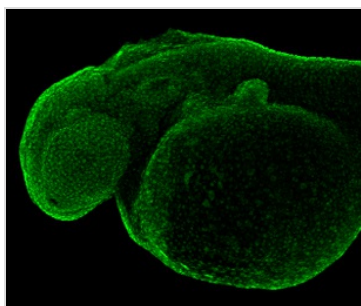
For full product information, images and publications, please visit our [website](#).

Date 2023 / 07 / 27 Page 1 of 2

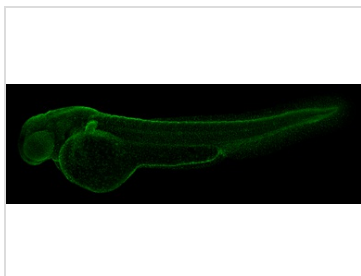
## DATA IMAGES

**GTX124496 WB Image**

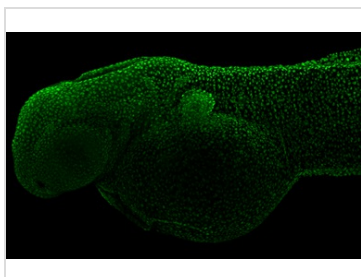
Various tissue extracts (30  $\mu$ g) were separated by 12% SDS-PAGE, and the membrane was blotted with Pcna antibody (GTX124496) diluted at 1:1000. The HRP-conjugated anti-rabbit IgG antibody (GTX213110-01) was used to detect the primary antibody.

**GTX124496 IHC-Wm Image**

Pcna antibody detects Pcna protein on zebrafish by whole mount immunohistochemical analysis.  
Sample: Paraformaldehyde-fixed 2 day-post-fertilization zebrafish embryo.  
Pcna antibody (GTX124496) dilution: 1:50.

**GTX124496 IHC-Wm Image**

Pcna antibody detects Pcna protein on zebrafish by whole mount immunohistochemical analysis.  
Sample: Paraformaldehyde-fixed 2 day-post-fertilization zebrafish embryo.  
Pcna antibody (GTX124496) dilution: 1:50.

**GTX124496 IHC-Wm Image**

Pcna antibody detects Pcna protein on whole mount zebrafish by immunohistochemical analysis.  
Sample: 2 day-post-fertilization zebrafish embryo.  
Pcna antibody (GTX124496) dilution: 1:100.



For full product information, images and publications, please visit our [website](#).