



SZABO SCANDIC

Part of Europa Biosite

Produktinformation



Forschungsprodukte & Biochemikalien



Zellkultur & Verbrauchsmaterial



Diagnostik & molekulare Diagnostik



Laborgeräte & Service

Weitere Information auf den folgenden Seiten!
See the following pages for more information!



Lieferung & Zahlungsart

siehe unsere [Liefer- und Versandbedingungen](#)

Zuschläge

- Mindermengenzuschlag
- Trockeneiszuschlag
- Gefahrgutzuschlag
- Expressversand

SZABO-SCANDIC HandelsgmbH

Quellenstraße 110, A-1100 Wien

T. +43(0)1 489 3961-0

F. +43(0)1 489 3961-7

mail@szabo-scandic.com

www.szabo-scandic.com

[linkedin.com/company/szaboscandic](https://www.linkedin.com/company/szaboscandic) 

Gapdh antibody

Cat. No. GTX124502

Host	Rabbit
Clonality	Polyclonal
Isotype	IgG
Application	WB, ICC/IF, IHC-P
Reactivity	Human, Mouse, Rat, Zebrafish, Drosophila, Cat, Dog, E. coli

Reference (6)

★★★★★ Review (2)

Package

100 µl, 25 µl

APPLICATION

Application Note

*Optimal dilutions/concentrations should be determined by the researcher.

Suggested dilution	Recommended dilution
WB	1:500-1:3000
ICC/IF	Assay dependent
IHC-P	1:100-1:1000

Not tested in other applications.

Calculated MW 36 kDa. ([Note](#))

PROPERTIES

Form	Liquid
Buffer	1XPBS pH7, 1% BSA, 20% Glycerol
Preservative	0.025% ProClin 300
Storage	Store as concentrated solution. Centrifuge briefly prior to opening vial. For short-term storage (1-2 weeks), store at 4°C. For long-term storage, aliquot and store at -20°C or below. Avoid multiple freeze-thaw cycles.
Concentration	0.11 mg/ml (Please refer to the vial label for the specific concentration.)
Immunogen	The immunogen used to generate this antibody corresponds to zebrafish Gapdh
Purification	Purified by antigen-affinity chromatography.
Conjugation	Unconjugated

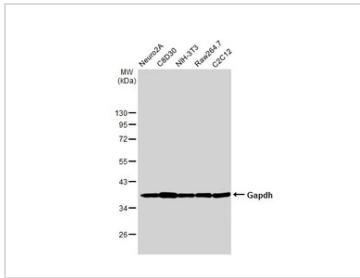
Note

For laboratory research use only. Not for any clinical, therapeutic, or diagnostic use in humans or animals. Not for animal or human consumption.

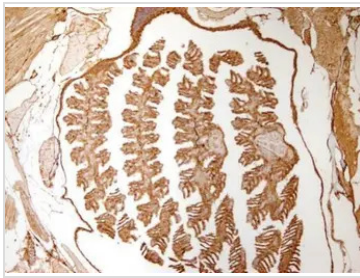
Purchasers shall not, and agree not to enable third parties to, analyze, copy, reverse engineer or otherwise attempt to determine the structure or sequence of the product.

For full product information, images and publications, please visit our [website](#).

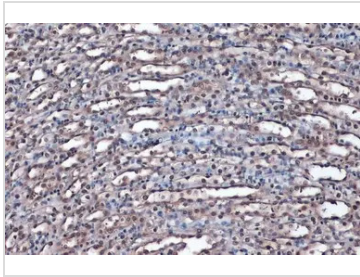
DATA IMAGES

**GTX124502 WB Image**

Various whole cell extracts (30 μ g) were separated by 10% SDS-PAGE, and the membrane was blotted with Gapdh antibody (GTX124502) diluted at 1:10000. The HRP-conjugated anti-rabbit IgG antibody (GTX213110-01) was used to detect the primary antibody.

**GTX124502 IHC-P Image**

Immunohistochemical analysis of paraffin-embedded zebrafish tissue, using gapdh (GTX124502) antibody at 1:300 dilution.

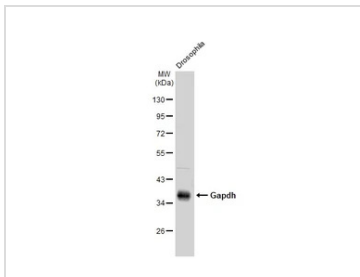
**GTX124502 IHC-P Image**

Gapdh antibody detects Gapdh protein at cytoplasm and nucleus by immunohistochemical analysis.

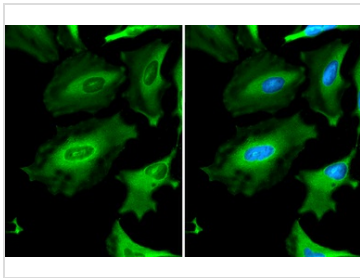
Sample: Paraffin-embedded mouse kidney.

Gapdh stained by Gapdh antibody (GTX124502) diluted at 1:1000.

Antigen Retrieval: Citrate buffer, pH 6.0, 15 min

**GTX124502 WB Image**

Drosophila extract (30 μ g) was separated by 10% SDS-PAGE, and the membrane was blotted with Gapdh antibody (GTX124502) diluted at 1:1000. The HRP-conjugated anti-rabbit IgG antibody (GTX213110-01) was used to detect the primary antibody.

**GTX124502 ICC/IF Image**

Gapdh antibody detects Gapdh protein at cytoplasm by immunofluorescent analysis.

Sample: HeLa cells were fixed in ice-cold MeOH for 5 min.

Green: Gapdh stained by Gapdh antibody (GTX124502) diluted at 1:6000.



For full product information, images and publications, please visit our [website](https://www.genetex.com).