



SZABO SCANDIC

Part of Europa Biosite

Produktinformation



Forschungsprodukte & Biochemikalien



Zellkultur & Verbrauchsmaterial



Diagnostik & molekulare Diagnostik



Laborgeräte & Service

Weitere Information auf den folgenden Seiten!
See the following pages for more information!



Lieferung & Zahlungsart

siehe unsere [Liefer- und Versandbedingungen](#)

Zuschläge

- Mindermengenzuschlag
- Trockeneiszuschlag
- Gefahrgutzuschlag
- Expressversand

SZABO-SCANDIC HandelsgmbH

Quellenstraße 110, A-1100 Wien

T. +43(0)1 489 3961-0

F. +43(0)1 489 3961-7

mail@szabo-scandic.com

www.szabo-scandic.com

[linkedin.com/company/szaboscandic](https://www.linkedin.com/company/szaboscandic) 

Tp63 antibody

Cat. No. GTX124660

Host	Rabbit
Clonality	Polyclonal
Isotype	IgG
Application	WB, IHC-P, IHC-Fr, IHC-Wm, ChIP assay, IHC
Reactivity	Southern platyfish, Zebrafish, Fish

Reference (11)

★★★★★ Review (2)

Package

100 µl, 25 µl

APPLICATION

Application Note

*Optimal dilutions/concentrations should be determined by the researcher.

Suggested dilution	Recommended dilution
WB	1:500-1:3000
IHC-P	Assay dependent
IHC-Fr	Assay dependent
IHC-Wm	1:100-1:500
ChIP assay	Assay dependent
IHC	1:100-1:1000

Not tested in other applications.

PROPERTIES

Form	Liquid
Buffer	1XPBS pH7, 1% BSA, 20% Glycerol
Preservative	0.025% ProClin 300
Storage	Store as concentrated solution. Centrifuge briefly prior to opening vial. For short-term storage (1-2 weeks), store at 4°C. For long-term storage, aliquot and store at -20°C or below. Avoid multiple freeze-thaw cycles.
Concentration	0.31 mg/ml (Please refer to the vial label for the specific concentration.)
Immunogen	The immunogen used to generate this antibody corresponds to zebrafish Tp63
Purification	Purified by antigen-affinity chromatography.
Conjugation	Unconjugated



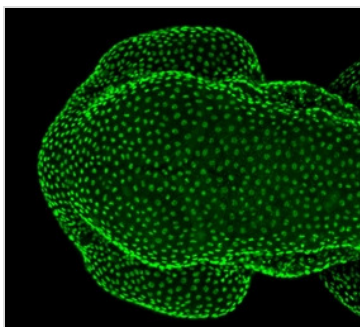
For full product information, images and publications, please visit our [website](#).

For laboratory research use only. Not for any clinical, therapeutic, or diagnostic use in humans or animals. Not for animal or human consumption.

Note

Purchasers shall not, and agree not to enable third parties to, analyze, copy, reverse engineer or otherwise attempt to determine the structure or sequence of the product.

DATA IMAGES

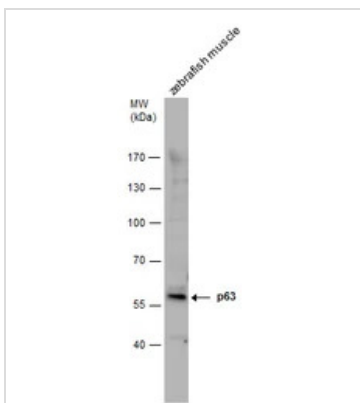


GTX124660 IHC-Wm Image

Tp63 antibody detects Tp63 protein on zebrafish by whole mount immunohistochemical analysis.

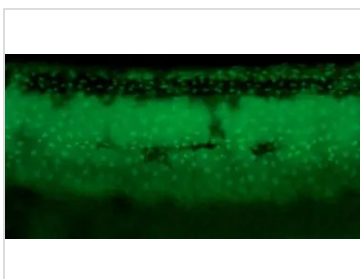
Sample: 2 days-post-fertilization zebrafish embryo.

Tp63 antibody (GTX124660) dilution: 1:100.



GTX124660 WB Image

p63 antibody detects p63 protein by western blot analysis. Zebrafish tissue extracts (30 µg) was separated by 7.5% SDS-PAGE, and the membrane was blotted with p63 antibody (GTX124660) at a dilution of 1:2500. The HRP-conjugated anti-rabbit IgG antibody (GTX213110-01) was used to detect the primary antibody.

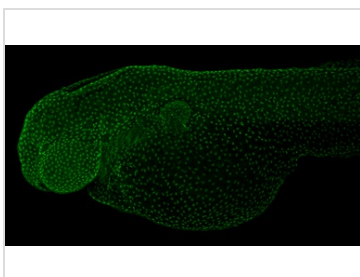


GTX124660 IHC-Wm Image

Tp63 antibody detects Tp63 protein at nucleus on whole-mount zebrafish embryos by immunohistochemical analysis.

Sample: Paraformaldehyde-fixed zebrafish embryos.

Tp63 antibody (GTX124660) dilution: 1:200.



GTX124660 IHC-Wm Image

Tp63 antibody detects Tp63 protein on whole mount zebrafish by immunohistochemical analysis.

Sample: Paraformaldehyde-fixed 2 days-post-fertilization zebrafish embryo.

Green: Tp63 stained by Tp63 antibody (GTX124660) diluted at 1:100.



For full product information, images and publications, please visit our [website](#).