



# SZABO SCANDIC

Part of Europa Biosite

## Produktinformation



Forschungsprodukte & Biochemikalien



Zellkultur & Verbrauchsmaterial



Diagnostik & molekulare Diagnostik



Laborgeräte & Service

Weitere Information auf den folgenden Seiten!  
See the following pages for more information!



### Lieferung & Zahlungsart

siehe unsere [Liefer- und Versandbedingungen](#)

### Zuschläge

- Mindermengenzuschlag
- Trockeneiszuschlag
- Gefahrgutzuschlag
- Expressversand

### SZABO-SCANDIC HandelsgmbH

Quellenstraße 110, A-1100 Wien

T. +43(0)1 489 3961-0

F. +43(0)1 489 3961-7

[mail@szabo-scandic.com](mailto:mail@szabo-scandic.com)

[www.szabo-scandic.com](http://www.szabo-scandic.com)

[linkedin.com/company/szaboscandic](https://www.linkedin.com/company/szaboscandic) 

## Histone H2A.X antibody

**Cat. No. GTX127343**

<b>Host</b>	Rabbit
<b>Clonality</b>	Polyclonal
<b>Isotype</b>	IgG
<b>Application</b>	WB, IHC-Wm
<b>Reactivity</b>	Zebrafish, Nothobranchius furzeri

Reference ( 1 )

★★★★★ Review ( 1 )

Package

100 µl, 25 µl

## APPLICATION

**Application Note**

\*Optimal dilutions/concentrations should be determined by the researcher.

Suggested dilution	Recommended dilution
WB	1:500-1:3000
IHC-Wm	1:100-1:500

Not tested in other applications.

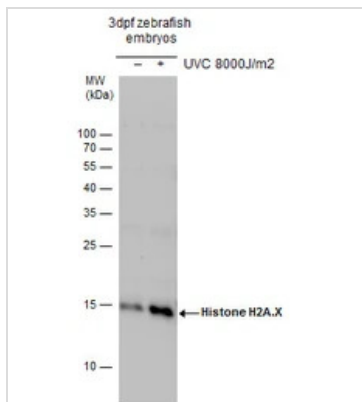
**Calculated MW** 15 kDa. ( [Note](#) )

## PROPERTIES

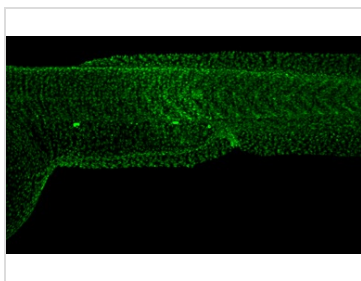
<b>Form</b>	Liquid
<b>Buffer</b>	1XPBS (pH7), 1% BSA, 20% Glycerol
<b>Preservative</b>	0.025% ProClin 300
<b>Storage</b>	Store as concentrated solution. Centrifuge briefly prior to opening vial. For short-term storage (1-2 weeks), store at 4°C. For long-term storage, aliquot and store at -20°C or below. Avoid multiple freeze-thaw cycles.
<b>Concentration</b>	1 mg/ml (Please refer to the vial label for the specific concentration.)
<b>Immunogen</b>	Carrier-protein conjugated synthetic peptide encompassing a sequence within the C-terminus region of zebrafish Histone H2A.X. The exact sequence is proprietary.
<b>Purification</b>	Purified by antigen-affinity chromatography.
<b>Conjugation</b>	Unconjugated
<b>Note</b>	For laboratory research use only. Not for any clinical, therapeutic, or diagnostic use in humans or animals. Not for animal or human consumption.  Purchasers shall not, and agree not to enable third parties to, analyze, copy, reverse engineer or otherwise attempt to determine the structure or sequence of the product.

For full product information, images and publications, please visit our [website](#).

## DATA IMAGES

**GTx127343 WB Image**

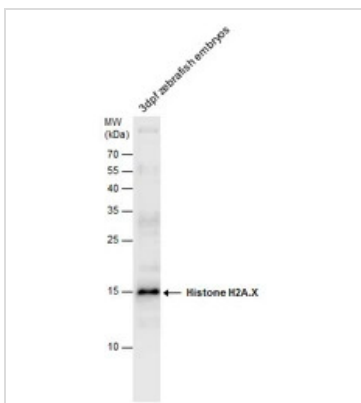
Histone H2A.X antibody detects Histone H2A.X protein by Western blot analysis. Un-treated (-) and treated (+, 8000J/m<sup>2</sup> UVC treatment) 3dpf zebrafish embryos whole cell extracts (30 µg) were separated by 15% SDS-PAGE, and the membrane was blotted with Histone H2A.X antibody (GTx127343) at a dilution of 1:1000.

**GTx127343 IHC-Wm Image**

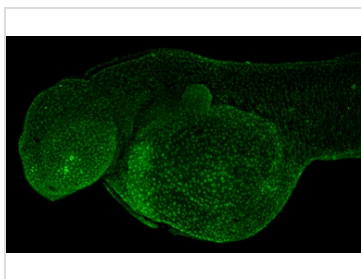
Histone H2A.X antibody detects Histone H2A.X protein on whole mount zebrafish by immunohistochemical analysis.

Sample: 2 day-post-fertilization zebrafish embryo.

Histone H2A.X antibody (GTx127343) dilution: 1:100.

**GTx127343 WB Image**

Zebrafish embryos extract (50 µg) was separated by 15% SDS-PAGE, and the membrane was blotted with Histone H2A.X antibody (GTx127343) diluted at 1:1000. The HRP-conjugated anti-rabbit IgG antibody (GTx213110-01) was used to detect the primary antibody.

**GTx127343 IHC-Wm Image**

Histone H2A.X antibody detects Histone H2A.X protein on whole mount zebrafish by immunohistochemical analysis.

Sample: 2 day-post-fertilization zebrafish embryo.

Histone H2A.X antibody (GTx127343) dilution: 1:100.



For full product information, images and publications, please visit our [website](https://www.genetex.com).