



SZABO SCANDIC

Part of Europa Biosite

Produktinformation



Forschungsprodukte & Biochemikalien



Zellkultur & Verbrauchsmaterial



Diagnostik & molekulare Diagnostik



Laborgeräte & Service

Weitere Information auf den folgenden Seiten!
See the following pages for more information!



Lieferung & Zahlungsart

siehe unsere [Liefer- und Versandbedingungen](#)

Zuschläge

- Mindermengenzuschlag
- Trockeneiszuschlag
- Gefahrgutzuschlag
- Expressversand

SZABO-SCANDIC HandelsgmbH

Quellenstraße 110, A-1100 Wien

T. +43(0)1 489 3961-0

F. +43(0)1 489 3961-7

mail@szabo-scandic.com

www.szabo-scandic.com

[linkedin.com/company/szaboscandic](https://www.linkedin.com/company/szaboscandic) 

Tnnc1a+b antibody

Cat. No. GTX127369

Host	Rabbit
Clonality	Polyclonal
Isotype	IgG
Application	IHC-Wm
Reactivity	Zebrafish

Package
100 µl, 25 µl

APPLICATION

Application Note

*Optimal dilutions/concentrations should be determined by the researcher.

Suggested dilution	Recommended dilution
IHC-Wm	1:100-1:500

Not tested in other applications.

Calculated MW 18 kDa. ([Note](#))

PROPERTIES

Form	Liquid
Buffer	0.1M Tris-Glycine (pH7), 10% Glycerol
Preservative	0.01% Thimerosal
Storage	Store as concentrated solution. Centrifuge briefly prior to opening vial. For short-term storage (1-2 weeks), store at 4°C. For long-term storage, aliquot and store at -20°C or below. Avoid multiple freeze-thaw cycles.
Concentration	0.56 mg/ml (Please refer to the vial label for the specific concentration.)
Immunogen	The immunogen used to generate this antibody corresponds to zebrafish Tnnc1a+b
Purification	Purified by antigen-affinity chromatography.
Conjugation	Unconjugated

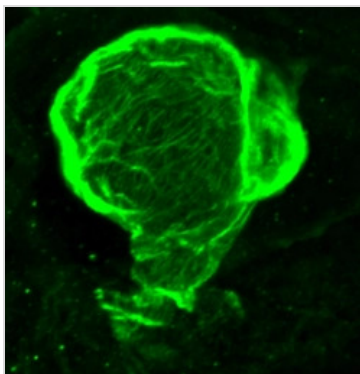
Note For laboratory research use only. Not for any clinical, therapeutic, or diagnostic use in humans or animals. Not for animal or human consumption.

Purchasers shall not, and agree not to enable third parties to, analyze, copy, reverse engineer or otherwise attempt to determine the structure or sequence of the product.



For full product information, images and publications, please visit our [website](#).

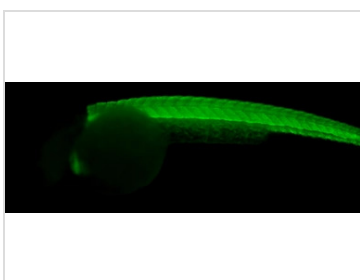
DATA IMAGES

**GTX127369 IHC-Wm Image**

Tnnc1a antibody detects Tnnc1a protein on zebrafish by whole mount immunohistochemical analysis.

Sample: 2 days-post-fertilization zebrafish embryo.

Tnnc1a antibody (GTX127369) dilution: 1:100.

**GTX127369 IHC-Wm Image**

Tnnc1a antibody detects Tnnc1a protein on zebrafish by whole mount immunohistochemical analysis.

Sample: 2 days-post-fertilization zebrafish embryo.

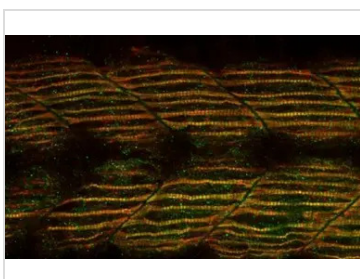
Tnnc1a antibody (GTX127369) dilution: 1:100.

**GTX127369 IHC-Wm Image**

Tnnc1a antibody detects Tnnc1a protein on zebrafish by whole mount immunohistochemical analysis.

Sample: 2 days-post-fertilization zebrafish embryo.

Tnnc1a antibody (GTX127369) dilution: 1:100.

**GTX127369 IHC-Wm Image**

Immunohistochemical analysis (whole mount) of zebrafish embryo, using Tnnc1a+b (GTX127369) antibody at 1:500 dilution.



For full product information, images and publications, please visit our [website](#).