



# SZABO SCANDIC

Part of Europa Biosite

## Produktinformation



Forschungsprodukte & Biochemikalien



Zellkultur & Verbrauchsmaterial



Diagnostik & molekulare Diagnostik



Laborgeräte & Service

Weitere Information auf den folgenden Seiten!  
See the following pages for more information!



### Lieferung & Zahlungsart

siehe unsere [Liefer- und Versandbedingungen](#)

### Zuschläge

- Mindermengenzuschlag
- Trockeneiszuschlag
- Gefahrgutzuschlag
- Expressversand

### SZABO-SCANDIC HandelsgmbH

Quellenstraße 110, A-1100 Wien

T. +43(0)1 489 3961-0

F. +43(0)1 489 3961-7

[mail@szabo-scandic.com](mailto:mail@szabo-scandic.com)

[www.szabo-scandic.com](http://www.szabo-scandic.com)

[linkedin.com/company/szaboscandic](https://www.linkedin.com/company/szaboscandic) 

## Sox10 antibody

**Cat. No. GTX128374**

|                    |                                     |
|--------------------|-------------------------------------|
| <b>Host</b>        | Rabbit                              |
| <b>Clonality</b>   | Polyclonal                          |
| <b>Isotype</b>     | IgG                                 |
| <b>Application</b> | WB, IHC-P, IHC-Fr, IHC-Wm, IHC      |
| <b>Reactivity</b>  | Zebrafish, Chicken, Japanese Medaka |

Reference ( 26 )

★★★★★ Review ( 4 )

Package

100 µl, 25 µl

## APPLICATION

**Application Note**

\*Optimal dilutions/concentrations should be determined by the researcher.

| Suggested dilution | Recommended dilution |
|--------------------|----------------------|
| WB                 | Assay dependent      |
| IHC-P              | Assay dependent      |
| IHC-Fr             | Assay dependent      |
| IHC-Wm             | 1:100-1:500          |
| IHC                | Assay dependent      |

Not tested in other applications.

## PROPERTIES

|                      |  |
|----------------------|--|
| <b>Form</b>          | Liquid   |
| <b>Buffer</b>        | 1XPBS (pH7), 20% Glycerol  |
| <b>Preservative</b>  | 0.01% Thimerosal   |
| <b>Storage</b>       | Store as concentrated solution. Centrifuge briefly prior to opening vial. For short-term storage (1-2 weeks), store at 4°C. For long-term storage, aliquot and store at -20°C or below. Avoid multiple freeze-thaw cycles. |
| <b>Concentration</b> | 1 mg/ml (Please refer to the vial label for the specific concentration.)   |
| <b>Immunogen</b>     | Recombinant protein encompassing a sequence within the center region of zebrafish Sox10. The exact sequence is proprietary.  |
| <b>Purification</b>  | Purified by antigen-affinity chromatography.   |
| <b>Conjugation</b>   | Unconjugated   |

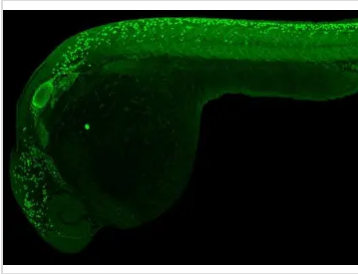
**Note**

For laboratory research use only. Not for any clinical, therapeutic, or diagnostic use in humans or animals. Not for animal or human consumption.

Purchasers shall not, and agree not to enable third parties to, analyze, copy, reverse engineer or otherwise attempt to determine the structure or sequence of the product.

For full product information, images and publications, please visit our [website](#).

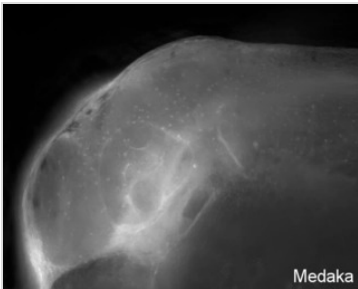
## DATA IMAGES

**GTX128374 IHC-Wm Image**

sox10 antibody detects sox10 protein at neural crest cells and otic vesicle on whole-mount zebrafish embryos by immunohistochemical analysis.

Sample: Paraformaldehyde-fixed zebrafish embryos.

sox10 antibody (GTX128374) dilution: 1:200.

**GTX128374 IHC-Wm Image**

Sox10 antibody detects Sox10 protein on Medaka by whole mount immunohistochemical analysis.

Sample: 7 days-post-fertilization medaka embryo.

Sox10 antibody (GTX128374) dilution: 1:100.



For full product information, images and publications, please visit our [website](#).