



SZABO SCANDIC

Part of Europa Biosite

Produktinformation



Forschungsprodukte & Biochemikalien



Zellkultur & Verbrauchsmaterial



Diagnostik & molekulare Diagnostik



Laborgeräte & Service

Weitere Information auf den folgenden Seiten!
See the following pages for more information!



Lieferung & Zahlungsart

siehe unsere [Liefer- und Versandbedingungen](#)

Zuschläge

- Mindermengenzuschlag
- Trockeneiszuschlag
- Gefahrgutzuschlag
- Expressversand

SZABO-SCANDIC HandelsgmbH

Quellenstraße 110, A-1100 Wien

T. +43(0)1 489 3961-0

F. +43(0)1 489 3961-7

mail@szabo-scandic.com

www.szabo-scandic.com

[linkedin.com/company/szaboscandic](https://www.linkedin.com/company/szaboscandic) 

Mpx antibody

Cat. No. GTX128379

Host	Rabbit
Clonality	Polyclonal
Isotype	IgG
Application	IHC-P, IHC-Fr, IHC-Wm, IHC
Reactivity	Zebrafish, Atlantic salmon

Reference (21)

★★★★★ Review (5)

Package

100 µl, 25 µl

APPLICATION

Application Note

*Optimal dilutions/concentrations should be determined by the researcher.

Suggested dilution	Recommended dilution
IHC-P	Assay dependent
IHC-Fr	Assay dependent
IHC-Wm	1:100-1:500
IHC	Assay dependent

Not tested in other applications.

PROPERTIES

Form	Liquid
Buffer	1XPBS pH7, 20% Glycerol
Preservative	0.025% ProClin 300
Storage	Store as concentrated solution. Centrifuge briefly prior to opening vial. For short-term storage (1-2 weeks), store at 4°C. For long-term storage, aliquot and store at -20°C or below. Avoid multiple freeze-thaw cycles.
Concentration	1.46 mg/ml (Please refer to the vial label for the specific concentration.)
Immunogen	Recombinant protein encompassing a sequence within the center region of zebrafish Mpx. The exact sequence is proprietary.
Purification	Purified by antigen-affinity chromatography.
Conjugation	Unconjugated

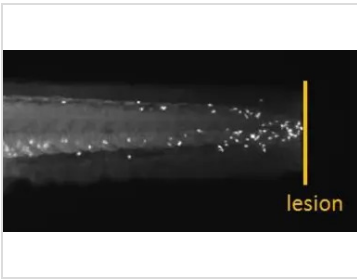
Note

For laboratory research use only. Not for any clinical, therapeutic, or diagnostic use in humans or animals. Not for animal or human consumption.

Purchasers shall not, and agree not to enable third parties to, analyze, copy, reverse engineer or otherwise attempt to determine the structure or sequence of the product.

For full product information, images and publications, please visit our [website](#).

DATA IMAGES

**GTX128379 IHC-Wm Image**

Mpx antibody detects Mpx protein on zebrafish by whole mount immunohistochemical analysis.

Sample: 2 days-post-fertilization zebrafish embryo.

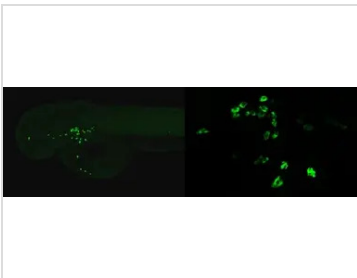
Mpx antibody (GTX128379) dilution: 1:100.

**GTX128379 IHC-Wm Image**

Mpx antibody detects Mpx protein on whole mount zebrafish by immunohistochemical analysis.

Sample: Paraformaldehyde-fixed 3 days-post-fertilization zebrafish embryo.

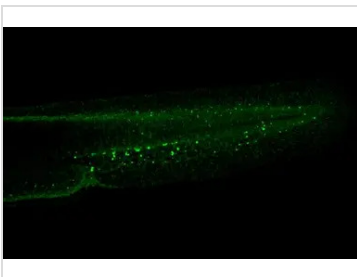
Green: Mpx stained by Mpx antibody (GTX128379) diluted at 1:100.

**GTX128379 IHC-Wm Image**

Mpx antibody detects Mpx antibody protein at leukocyte on whole-mount zebrafish embryos by immunohistochemical analysis.

Sample: Paraformaldehyde-fixed zebrafish embryos.

Mpx antibody (GTX128379) dilution: 1:200.

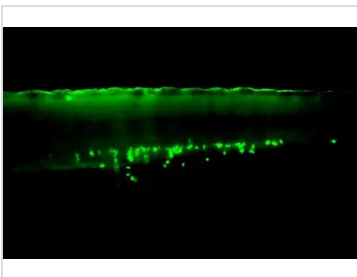
**GTX128379 IHC-Wm Image**

Mpx antibody detects Mpx protein on whole mount zebrafish by immunohistochemical analysis.

Sample: Paraformaldehyde-fixed 2 days-post-fertilization zebrafish embryo.

Green: Mpx stained by Mpx antibody (GTX128379) diluted at 1:100.

Antigen Retrieval: Tris-HCl buffer, pH 9.0, 20 min at 70°C

**GTX128379 IHC-Wm Image**

Mpx antibody detects Mpx protein on whole mount zebrafish by immunohistochemical analysis.

Sample: Paraformaldehyde-fixed 2 days-post-fertilization zebrafish embryo.

Green: Mpx stained by Mpx antibody (GTX128379) diluted at 1:100.

Antigen Retrieval: Tris-HCl buffer, pH 9.0, 20 min at 70°C



For full product information, images and publications, please visit our [website](#).