



SZABO SCANDIC

Part of Europa Biosite

Produktinformation



Forschungsprodukte & Biochemikalien



Zellkultur & Verbrauchsmaterial



Diagnostik & molekulare Diagnostik



Laborgeräte & Service

Weitere Information auf den folgenden Seiten!
See the following pages for more information!



Lieferung & Zahlungsart

siehe unsere [Liefer- und Versandbedingungen](#)

Zuschläge

- Mindermengenzuschlag
- Trockeneiszuschlag
- Gefahrgutzuschlag
- Expressversand

SZABO-SCANDIC HandelsgmbH

Quellenstraße 110, A-1100 Wien

T. +43(0)1 489 3961-0

F. +43(0)1 489 3961-7

mail@szabo-scandic.com

www.szabo-scandic.com

[linkedin.com/company/szaboscandic](https://www.linkedin.com/company/szaboscandic) 

Myl2 antibody

Cat. No. GTX128816

Host	Rabbit
Clonality	Polyclonal
Isotype	IgG
Application	WB, IHC-Fr, IHC-Wm, IHC
Reactivity	Zebrafish

Reference (1)
 Package
 100 µl, 25 µl

APPLICATION

Application Note

*Optimal dilutions/concentrations should be determined by the researcher.

Suggested dilution	Recommended dilution
WB	1:500-1:3000
IHC-Fr	Assay dependent
IHC-Wm	1:50-1:500
IHC	1:100-1:1000

Not tested in other applications.

PROPERTIES

Form	Liquid
Buffer	1XPBS (pH7), 20% Glycerol
Preservative	0.025% ProClin 300
Storage	Store as concentrated solution. Centrifuge briefly prior to opening vial. For short-term storage (1-2 weeks), store at 4°C. For long-term storage, aliquot and store at -20°C or below. Avoid multiple freeze-thaw cycles.
Concentration	0.66 mg/ml (Please refer to the vial label for the specific concentration.)
Immunogen	The immunogen used to generate this antibody corresponds to zebrafish Myl2
Purification	Purified by antigen-affinity chromatography.
Conjugation	Unconjugated

Note

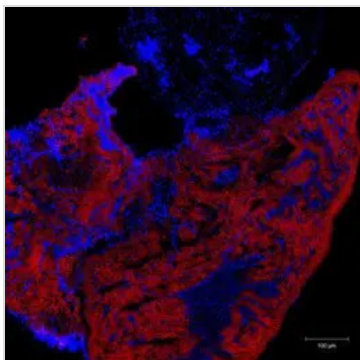
For laboratory research use only. Not for any clinical, therapeutic, or diagnostic use in humans or animals. Not for animal or human consumption.

Purchasers shall not, and agree not to enable third parties to, analyze, copy, reverse engineer or otherwise attempt to determine the structure or sequence of the product.



For full product information, images and publications, please visit our [website](#).

DATA IMAGES

**GTX128816 IHC Image**

Myl2 antibody detects Myl2 protein at cardiac muscles on zebrafish heart sections by immunohistochemical analysis.

Sample: Myl2 antibody (GTX128816) dilution: 1:200.

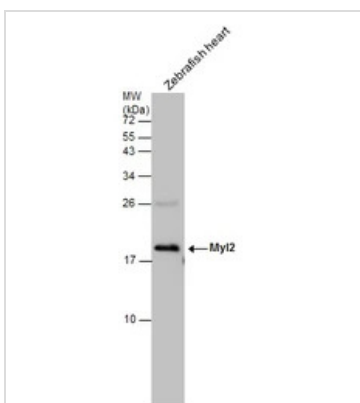
Image provided with permission courtesy of Dr. YJ at NTHU.

**GTX128816 IHC-Wm Image**

Myl2 antibody detects Myl2 protein on zebrafish by whole mount immunohistochemical analysis.

Sample: 1 day-post-fertilization zebrafish embryo.

Myl2 antibody (GTX128816) dilution: 1:50.

**GTX128816 WB Image**

Zebrafish tissue extract (30 μg) was separated by 15% SDS-PAGE, and the membrane was blotted with Myl2 antibody (GTX128816) diluted at 1:500.



For full product information, images and publications, please visit our [website](https://www.genetex.com).