



# SZABO SCANDIC

Part of Europa Biosite

## Produktinformation



Forschungsprodukte & Biochemikalien



Zellkultur & Verbrauchsmaterial



Diagnostik & molekulare Diagnostik



Laborgeräte & Service

Weitere Information auf den folgenden Seiten!  
See the following pages for more information!



### Lieferung & Zahlungsart

siehe unsere [Liefer- und Versandbedingungen](#)

### Zuschläge

- Mindermengenzuschlag
- Trockeneiszuschlag
- Gefahrgutzuschlag
- Expressversand

### SZABO-SCANDIC HandelsgmbH

Quellenstraße 110, A-1100 Wien

T. +43(0)1 489 3961-0

F. +43(0)1 489 3961-7

[mail@szabo-scandic.com](mailto:mail@szabo-scandic.com)

[www.szabo-scandic.com](http://www.szabo-scandic.com)

[linkedin.com/company/szaboscandic](https://www.linkedin.com/company/szaboscandic) 

## Atp6v1a1 antibody

**Cat. No. GTX129736**

<b>Host</b>	Rabbit
<b>Clonality</b>	Polyclonal
<b>Isotype</b>	IgG
<b>Application</b>	WB, IHC-Wm
<b>Reactivity</b>	Zebrafish

Reference ( 1 )

 Review ( 1 )

Package

100 µl, 25 µl

## APPLICATION

**Application Note**

\*Optimal dilutions/concentrations should be determined by the researcher.

Suggested dilution	Recommended dilution
WB	Assay dependent
IHC-Wm	1:100-1:500

Not tested in other applications.

## PROPERTIES

<b>Form</b>	Liquid
<b>Buffer</b>	1XPBS pH7, 20% Glycerol
<b>Preservative</b>	0.025% ProClin 300
<b>Storage</b>	Store as concentrated solution. Centrifuge briefly prior to opening vial. For short-term storage (1-2 weeks), store at 4°C. For long-term storage, aliquot and store at -20°C or below. Avoid multiple freeze-thaw cycles.
<b>Concentration</b>	0.57 mg/ml (Please refer to the vial label for the specific concentration.)
<b>Immunogen</b>	The immunogen used to generate this antibody corresponds to zebrafish Atp6v1a1
<b>Purification</b>	Purified by antigen-affinity chromatography.
<b>Conjugation</b>	Unconjugated

**Note**

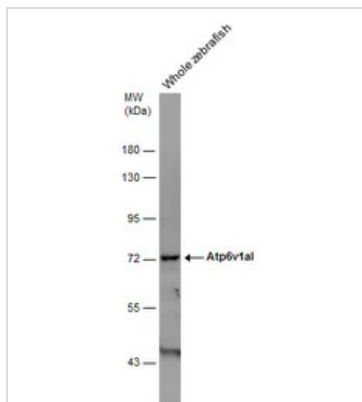
For laboratory research use only. Not for any clinical, therapeutic, or diagnostic use in humans or animals. Not for animal or human consumption.

Purchasers shall not, and agree not to enable third parties to, analyze, copy, reverse engineer or otherwise attempt to determine the structure or sequence of the product.

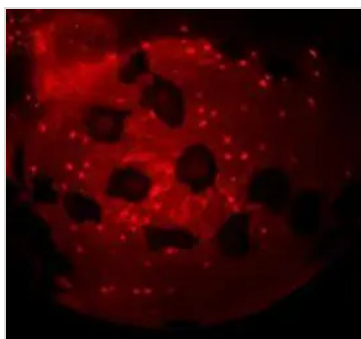


For full product information, images and publications, please visit our [website](#).

## DATA IMAGES

**GTX129736 WB Image**

Whole zebrafish extract (30 µg) was separated by 7.5% SDS-PAGE, and the membrane was blotted with Atp6v1a1 antibody (GTX129736) diluted at 1:1000.

**GTX129736 IHC-Wm Image**

Atp6v1a1 antibody detects atp6v1a1 protein at epidermal ionocytes on whole-mount zebrafish embryos by immunohistochemical analysis.

Sample: Paraformaldehyde-fixed zebrafish embryos.

atp6v1a1 antibody (GTX129736) dilution: 1:100.

**GTX129736 IHC-Wm Image**

Atp6v1a1 antibody detects Atp6v1a1 protein on zebrafish by whole mount immunohistochemical analysis.

Sample: 2 days-post-fertilization zebrafish embryo.

Atp6v1a1 antibody (GTX129736) dilution: 1:100.



For full product information, images and publications, please visit our [website](#).