



SZABO SCANDIC

Part of Europa Biosite

Produktinformation



Forschungsprodukte & Biochemikalien



Zellkultur & Verbrauchsmaterial



Diagnostik & molekulare Diagnostik



Laborgeräte & Service

Weitere Information auf den folgenden Seiten!
See the following pages for more information!



Lieferung & Zahlungsart

siehe unsere [Liefer- und Versandbedingungen](#)

Zuschläge

- Mindermengenzuschlag
- Trockeneiszuschlag
- Gefahrgutzuschlag
- Expressversand

SZABO-SCANDIC HandelsgmbH

Quellenstraße 110, A-1100 Wien

T. +43(0)1 489 3961-0

F. +43(0)1 489 3961-7

mail@szabo-scandic.com

www.szabo-scandic.com

[linkedin.com/company/szaboscandic](https://www.linkedin.com/company/szaboscandic) 

Lyz antibody

Cat. No. GTX132379

Host	Rabbit
Clonality	Polyclonal
Isotype	IgG
Application	WB, IHC-Wm
Reactivity	Zebrafish

Package
100 µl, 25 µl

APPLICATION

Application Note

*Optimal dilutions/concentrations should be determined by the researcher.

Suggested dilution	Recommended dilution
WB	1:500-1:3000
IHC-Wm	1:100-1:500

Not tested in other applications.

PROPERTIES

Form	Liquid
Buffer	1XPBS (pH7), 20% Glycerol
Preservative	0.025% ProClin 300
Storage	Store as concentrated solution. Centrifuge briefly prior to opening vial. For short-term storage (1-2 weeks), store at 4°C. For long-term storage, aliquot and store at -20°C or below. Avoid multiple freeze-thaw cycles.
Concentration	2.68 mg/ml (Please refer to the vial label for the specific concentration.)
Immunogen	Recombinant protein encompassing a sequence within the center region of zebrafish Lyz. The exact sequence is proprietary.
Purification	Purified by antigen-affinity chromatography.
Conjugation	Unconjugated

Note

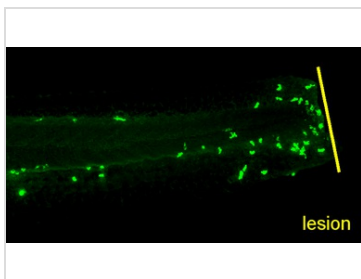
For laboratory research use only. Not for any clinical, therapeutic, or diagnostic use in humans or animals. Not for animal or human consumption.

Purchasers shall not, and agree not to enable third parties to, analyze, copy, reverse engineer or otherwise attempt to determine the structure or sequence of the product.



For full product information, images and publications, please visit our [website](#).

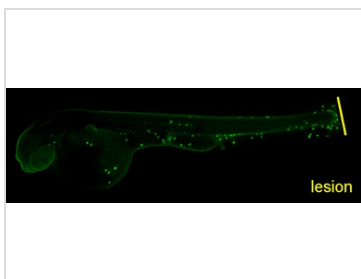
DATA IMAGES

**GTX132379 IHC-Wm Image**

Lyz antibody detects Lyz protein on zebrafish by whole mount immunohistochemical analysis.

Sample: 3 days-post-fertilization zebrafish embryo.

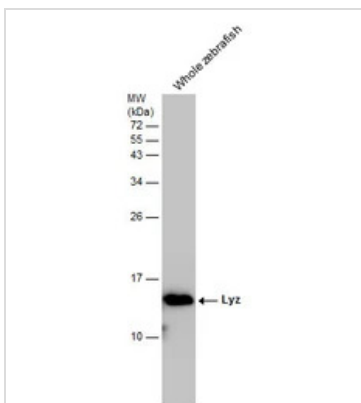
Lyz antibody (GTX132379) dilution: 1:100.

**GTX132379 IHC-Wm Image**

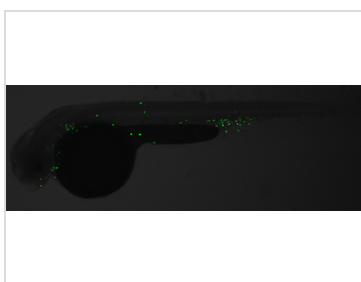
Lyz antibody detects Lyz protein on zebrafish by whole mount immunohistochemical analysis.

Sample: 3 days-post-fertilization zebrafish embryo.

Lyz antibody (GTX132379) dilution: 1:100.

**GTX132379 WB Image**

Whole zebrafish extract (30 µg) was separated by 15% SDS-PAGE, and the membrane was blotted with Lyz antibody (GTX132379) diluted at 1:1000.

**GTX132379 IHC-Wm Image**

Lyz antibody detects Lyz protein on zebrafish by whole mount immunohistochemical analysis.

Sample: 2 days-post-fertilization zebrafish embryo.

Lyz antibody (GTX132379) dilution: 1:100.



For full product information, images and publications, please visit our [website](#).