



# SZABO SCANDIC

Part of Europa Biosite

## Produktinformation



Forschungsprodukte & Biochemikalien



Zellkultur & Verbrauchsmaterial



Diagnostik & molekulare Diagnostik



Laborgeräte & Service

Weitere Information auf den folgenden Seiten!  
See the following pages for more information!



### Lieferung & Zahlungsart

siehe unsere [Liefer- und Versandbedingungen](#)

### Zuschläge

- Mindermengenzuschlag
- Trockeneiszuschlag
- Gefahrgutzuschlag
- Expressversand

### SZABO-SCANDIC HandelsgmbH

Quellenstraße 110, A-1100 Wien

T. +43(0)1 489 3961-0

F. +43(0)1 489 3961-7

[mail@szabo-scandic.com](mailto:mail@szabo-scandic.com)

[www.szabo-scandic.com](http://www.szabo-scandic.com)

[linkedin.com/company/szaboscandic](https://www.linkedin.com/company/szaboscandic) 

## Streptavidin antibody (HRP)

Cat No. GTX132626-01

<b>Host</b>	Rabbit
<b>Clonality</b>	Polyclonal
<b>Isotype</b>	IgG
<b>Application</b>	WB, ELISA

Reference ( 3 )  
Package  
100 µl, 25 µl

## APPLICATION

## Application Note

\*Optimal dilutions/concentrations should be determined by the researcher.

Suggested dilution	Dilution
WB	Assay dependent
ELISA	1:1000-1:10000

Not tested in other applications.

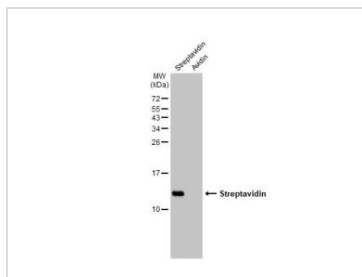
## PROPERTIES

<b>Form</b>	Liquid
<b>Buffer</b>	0.05M Tris (pH7.4), 0.15M NaCl, 1%BSA
<b>Preservative</b>	0.025% ProClin 300
<b>Storage</b>	Store as concentrated solution. Centrifuge briefly prior to opening vial. For short-term storage (1-2 weeks), store at 4°C. For long-term storage, aliquot and store at -20°C or below. Avoid multiple freeze-thaw cycles.
<b>Concentration</b>	1 mg/ml (Please refer to the vial label for the specific concentration.)
<b>Immunogen</b>	The immunogen used to generate this antibody corresponds to Streptavidin.
<b>Purification</b>	Purified by antigen-affinity chromatography.
<b>Conjugation</b>	Horseradish peroxidase(HRP)
<b>Note</b>	For laboratory use only. Not for any clinical, therapeutic, or diagnostic use in humans or animals. Not for animal or human consumption.

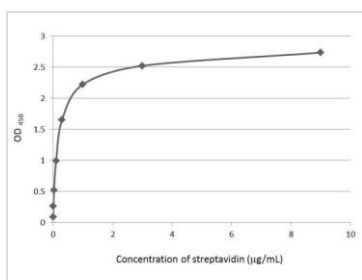


For full product information, images and publications, please visit our [website](#).

## DATA IMAGES

**GTX132626-01 WB Image**

Streptavidin (0.5  $\mu\text{g}$ ) were separated by 15% SDS-PAGE, and the membrane was blotted with Streptavidin antibody (GTX132626-01) diluted at 1:10000. The HRP-conjugated anti-FALSE was used to detect the primary antibody.

**GTX132626-01 ELISA Image**

An ELISA plate is coated with 50  $\mu\text{L}$  of Streptavidin recombinant protein at concentration ranged from 0.03  $\mu\text{g}/\text{mL}$  to 9  $\mu\text{g}/\text{mL}$ . The coated protein is detected with HRP-conjugated anti-Streptavidin antibody (GTX132626-01) at 0.5  $\mu\text{g}/\text{mL}$ .



For full product information, images and publications, please visit our [website](#).