



# SZABO SCANDIC

Part of Europa Biosite

## Produktinformation



Forschungsprodukte & Biochemikalien



Zellkultur & Verbrauchsmaterial



Diagnostik & molekulare Diagnostik



Laborgeräte & Service

Weitere Information auf den folgenden Seiten!  
See the following pages for more information!



### Lieferung & Zahlungsart

siehe unsere [Liefer- und Versandbedingungen](#)

### Zuschläge

- Mindermengenzuschlag
- Trockeneiszuschlag
- Gefahrgutzuschlag
- Expressversand

### SZABO-SCANDIC HandelsgmbH

Quellenstraße 110, A-1100 Wien

T. +43(0)1 489 3961-0

F. +43(0)1 489 3961-7

[mail@szabo-scandic.com](mailto:mail@szabo-scandic.com)

[www.szabo-scandic.com](http://www.szabo-scandic.com)

[linkedin.com/company/szaboscandic](https://www.linkedin.com/company/szaboscandic) 

## Human Papillomavirus type 16 E7 protein, His tag

**Cat. No. GTX133411-pro**

<b>Application</b>	ELISA, Lateral Flow, Sandwich ELISA
<b>Species</b>	Human papillomavirus type 16

**Package**  
100 µg

## APPLICATION

**Application Note**

For Sandwich ELISA, we would recommend the following pairs :

Capture : GTX637546 / GTX637228, Detection : GTX637228 / GTX637546.

Please notice that GTX637228 / GTX637546 needs to be conjugated to HRP to function as the detection antibody when paired with GTX637546 / GTX637228. Please contact us for custom HRP-conjugated antibody.

For Lateral Flow, we would recommend the following pairs :

Capture : GTX637228, Detection : GTX637546

## PROPERTIES

**Form** Liquid**Buffer** PBS, 0.1% SDS**Preservative** No preservative**Storage** Store as concentrated solution. Centrifuge briefly prior to opening vial. Aliquot and store at -20°C or below. Avoid multiple freeze-thaw cycles. For long-term storage after reconstitution, aliquot and store at -70°C or below. Do not vortex.**Concentration** 3 mg/ml (Please refer to the vial label for the specific concentration.)**Region/Sequence** Full length protein of Human Papilloma virus type 16 E7 protein**Expression System** E. Coli**Purity** >95%**Conjugation** Unconjugated**Note**

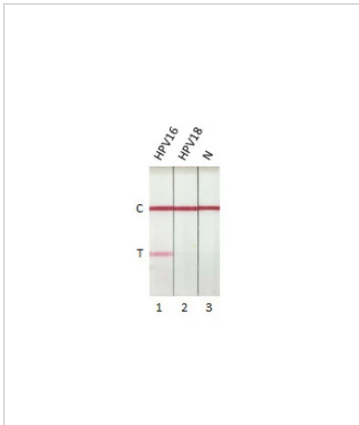
For laboratory research use only. Not for any clinical, therapeutic, or diagnostic use in humans or animals. Not for animal or human consumption.

Purchasers shall not, and agree not to enable third parties to, analyze, copy, reverse engineer or otherwise attempt to determine the structure or sequence of the product.



For full product information, images and publications, please visit our [website](#).

DATA IMAGES



**GTX133411-pro Image**

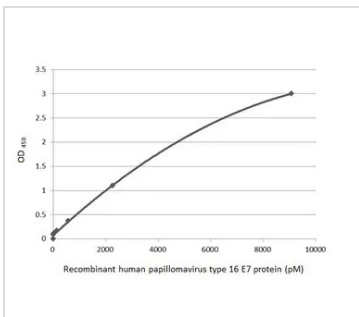
Detection of Human Papillomavirus type 16 E7 protein by lateral flow assay using the monoclonal antibody pair.

**Capture:** Human Papillomavirus type 16 E7 antibody (GTX637228 [HL1647])

**Detection:** Human Papillomavirus type 16 E7 antibody (GTX637546 [HL1821])

**Samples (10 ng) :**

1. HPV16 E7 protein (GTX133411-pro)
2. HPV18 E7 protein (GTX133412-pro)
3. Lysis buffer



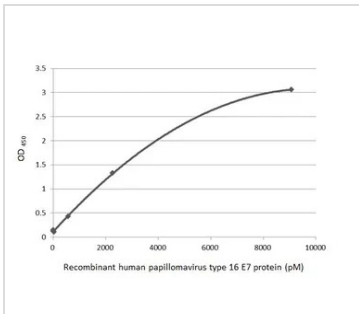
**GTX133411-pro Image**

Sandwich ELISA detection of recombinant Human Papillomavirus type 16 E7 protein, His tag (GTX133411-pro) using antibodies as below.

**Capture:** Human Papillomavirus type 16 E7 antibody [HL1647] (GTX637228) (5 µg/mL)

**Detection:** HRP-conjugated Human Papillomavirus type 16 E7 antibody [HL1821] (GTX637546) (1 µg/mL)

Please notice that GTX637546 needs to be conjugated to HRP to function as the detection antibody when paired with GTX637228. Please contact us for custom HRP-conjugated antibody.



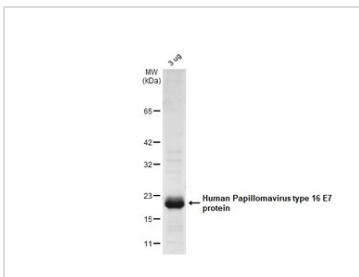
**GTX133411-pro Image**

Sandwich ELISA detection of recombinant Human Papillomavirus type 16 E7 protein, His tag (GTX133411-pro) using antibodies as below.

**Capture:** Human Papillomavirus type 16 E7 antibody [HL1821] (GTX637546) (5 µg/mL)

**Detection:** HRP-conjugated Human Papillomavirus type 16 E7 antibody [HL1647] (GTX637228) (1 µg/mL)

Please notice that GTX637228 needs to be conjugated to HRP to function as the detection antibody when paired with GTX637546. Please contact us for custom HRP-conjugated antibody.



**GTX133411-pro Image**

GTX133411-pro Human Papillomavirus type 16 E7 protein was analyzed using SDS-PAGE and stained with coomassie blue and captured by monochrome camera.



For full product information, images and publications, please visit our [website](#).