



SZABO SCANDIC

Part of Europa Biosite

Produktinformation



Forschungsprodukte & Biochemikalien



Zellkultur & Verbrauchsmaterial



Diagnostik & molekulare Diagnostik



Laborgeräte & Service

Weitere Information auf den folgenden Seiten!
See the following pages for more information!



Lieferung & Zahlungsart

siehe unsere [Liefer- und Versandbedingungen](#)

Zuschläge

- Mindermengenzuschlag
- Trockeneiszuschlag
- Gefahrgutzuschlag
- Expressversand

SZABO-SCANDIC HandelsgmbH

Quellenstraße 110, A-1100 Wien

T. +43(0)1 489 3961-0

F. +43(0)1 489 3961-7

mail@szabo-scandic.com

www.szabo-scandic.com

[linkedin.com/company/szaboscandic](https://www.linkedin.com/company/szaboscandic) 

Human Papillomavirus type 18 E7 protein, His tag

Cat. No. GTX133412-pro

Application	ELISA, Lateral Flow
Species	Human papillomavirus type 18

Package
100 µg

APPLICATION

Application Note

Recommended antibody pairs for sandwich ELISA:

Capture : GTX638883, Detection : GTX634337 or Capture : GTX634337, Detection : GTX638883.

Recommended antibody pairs for Lateral Flow:

Capture : GTX638883, Detection : GTX634337.

PROPERTIES

Form	Liquid
Buffer	PBS, 0.1% SDS
Preservative	No preservative
Storage	Store as concentrated solution. Centrifuge briefly prior to opening vial. Aliquot and store at -20°C or below. Avoid multiple freeze-thaw cycles. For long-term storage after reconstitution, aliquot and store at -70°C or below. Do not vortex.
Concentration	3 mg/ml (Please refer to the vial label for the specific concentration.)
Region/Sequence	Full length protein of Human Papilloma virus type 18 E7 protein
Expression System	E. Coli
Purity	>95%
Conjugation	Unconjugated

Note

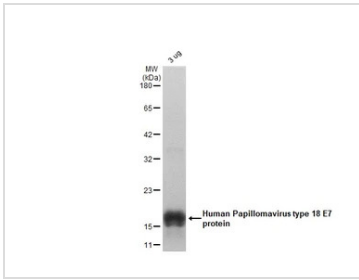
For laboratory research use only. Not for any clinical, therapeutic, or diagnostic use in humans or animals. Not for animal or human consumption.

Purchasers shall not, and agree not to enable third parties to, analyze, copy, reverse engineer or otherwise attempt to determine the structure or sequence of the product.



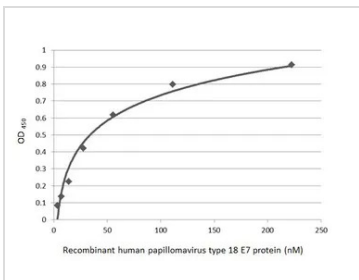
For full product information, images and publications, please visit our [website](#).

DATA IMAGES



GTX133412-pro Image

GTX133412-pro Human Papillomavirus type 18 E7 protein was analyzed using SDS-PAGE and stained with coomassie blue and captured by monochrome camera.

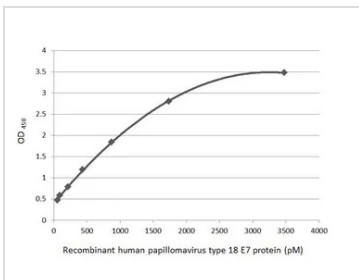


GTX133412-pro ELISA Image

Sandwich ELISA detection of recombinant Human Papillomavirus type 18 E7 protein, His tag (GTX133412-pro) using antibodies as below.

Capture: Human Papillomavirus type 18 E7 antibody [HL2522] (GTX638883) (5 µg/mL)

Detection: Human Papillomavirus type 18 E7 antibody [GT881] (GTX634337) (1 µg/mL)

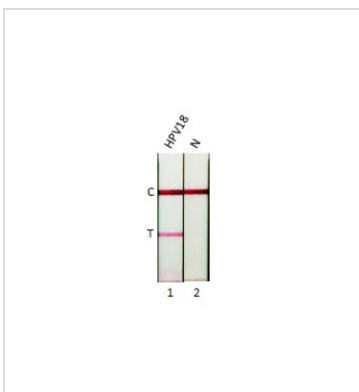


GTX133412-pro ELISA Image

Sandwich ELISA detection of recombinant Human Papillomavirus type 18 E7 protein, His tag (GTX133412-pro) using antibodies as below.

Capture: Human Papillomavirus type 18 E7 antibody [HL2522] (GTX634337) (5 µg/mL)

Detection: Human Papillomavirus type 18 E7 antibody [HL2522] (GTX638883) (1 µg/mL)



GTX133412-pro Lateral Flow Image

Detection of Human Papillomavirus type 18 E7 protein by lateral flow assay using the monoclonal antibody pair.

Capture: Human Papillomavirus type 18 E7 antibody (GTX638883 [HL2522])

Detection: Human Papillomavirus type 18 E7 antibody (GTX634337 [GT881])

Samples (20 ng) :

1. Human Papilloma virus type 18 E7 protein (GTX133412-pro)
2. Lysis buffer



For full product information, images and publications, please visit our [website](#).