



SZABO SCANDIC

Part of Europa Biosite

Produktinformation



Forschungsprodukte & Biochemikalien



Zellkultur & Verbrauchsmaterial



Diagnostik & molekulare Diagnostik



Laborgeräte & Service

Weitere Information auf den folgenden Seiten!
See the following pages for more information!



Lieferung & Zahlungsart

siehe unsere [Liefer- und Versandbedingungen](#)

Zuschläge

- Mindermengenzuschlag
- Trockeneiszuschlag
- Gefahrgutzuschlag
- Expressversand

SZABO-SCANDIC HandelsgmbH

Quellenstraße 110, A-1100 Wien

T. +43(0)1 489 3961-0

F. +43(0)1 489 3961-7

mail@szabo-scandic.com

www.szabo-scandic.com

[linkedin.com/company/szaboscandic](https://www.linkedin.com/company/szaboscandic) 

Myelin PLP antibody

Cat No. GTX134433

Host	Rabbit
Clonality	Polyclonal
Isotype	IgG
Application	IHC-P
Reactivity	Mouse, Rat

Package
100 µl, 25 µl

APPLICATION

Application Note

*Optimal dilutions/concentrations should be determined by the researcher.

Suggested dilution	Dilution
IHC-P	1:1000

Not tested in other applications.

Calculated MW 30 kDa. ([Note](#))

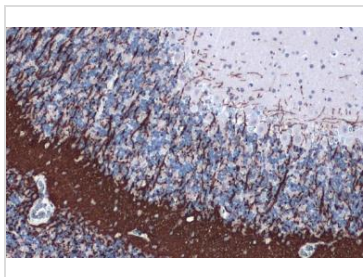
PROPERTIES

Form	Liquid
Storage	Store as concentrated solution. Centrifuge briefly prior to opening vial. For short-term storage (1-2 weeks), store at 4°C. For long-term storage, aliquot and store at -20°C or below. Avoid multiple freeze-thaw cycles.
Immunogen	Carrier-protein conjugated synthetic peptide encompassing a sequence within the center region of mouse Myelin PLP. The exact sequence is proprietary.
Purification	Purified by antigen-affinity chromatography.
Conjugation	Unconjugated
Note	For laboratory use only. Not for any clinical, therapeutic, or diagnostic use in humans or animals. Not for animal or human consumption.



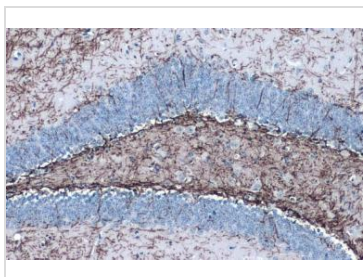
For full product information, images and publications, please visit our [website](#).

DATA IMAGES



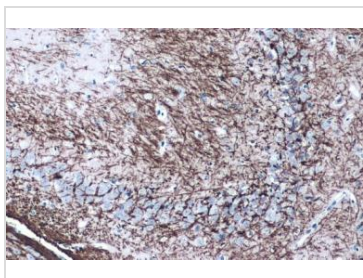
GTX134433 IHC-P Image

Myelin PLP antibody detects Myelin PLP protein at cell membrane by immunohistochemical analysis.
 Sample: Paraffin-embedded rat cerebellum.
 Myelin PLP stained by Myelin PLP antibody (GTX134433) diluted at 1:1000.
 Antigen Retrieval: Citrate buffer, pH 6.0, 15 min



GTX134433 IHC-P Image

Myelin PLP antibody detects Myelin PLP protein at cell membrane by immunohistochemical analysis.
 Sample: Paraffin-embedded mouse hippocampus.
 Myelin PLP stained by Myelin PLP antibody (GTX134433) diluted at 1:1000.
 Antigen Retrieval: Citrate buffer, pH 6.0, 15 min



GTX134433 IHC-P Image

Myelin PLP antibody detects Myelin PLP protein at cell membrane by immunohistochemical analysis.
 Sample: Paraffin-embedded mouse hippocampus.
 Myelin PLP stained by Myelin PLP antibody (GTX134433) diluted at 1:1000.
 Antigen Retrieval: Citrate buffer, pH 6.0, 15 min



For full product information, images and publications, please visit our [website](#).