



SZABO SCANDIC

Part of Europa Biosite

Produktinformation



Forschungsprodukte & Biochemikalien



Zellkultur & Verbrauchsmaterial



Diagnostik & molekulare Diagnostik



Laborgeräte & Service

Weitere Information auf den folgenden Seiten!
See the following pages for more information!



Lieferung & Zahlungsart

siehe unsere [Liefer- und Versandbedingungen](#)

Zuschläge

- Mindermengenzuschlag
- Trockeneiszuschlag
- Gefahrgutzuschlag
- Expressversand

SZABO-SCANDIC HandelsgmbH

Quellenstraße 110, A-1100 Wien

T. +43(0)1 489 3961-0

F. +43(0)1 489 3961-7

mail@szabo-scandic.com

www.szabo-scandic.com

[linkedin.com/company/szaboscandic](https://www.linkedin.com/company/szaboscandic) 

Lassa virus Nucleoprotein antibody

Cat No. GTX134873

Host	Rabbit
Clonality	Polyclonal
Isotype	IgG
Application	WB
Reactivity	Lassa virus

Package
100 µl, 25 µl

APPLICATION

Application Note

*Optimal dilutions/concentrations should be determined by the researcher.

Suggested dilution	Dilution
WB	1:5000

Not tested in other applications.

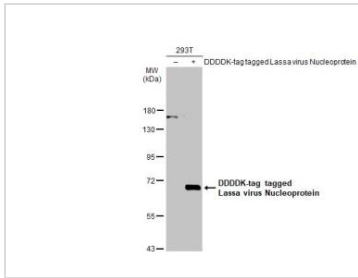
PROPERTIES

Form	Liquid
Buffer	1XPBS, 20% Glycerol (pH7). 0.025% ProClin 300 was added as a preservative.
Storage	Store as concentrated solution. Centrifuge briefly prior to opening vial. For short-term storage (1-2 weeks), store at 4°C. For long-term storage, we recommend adding 50% glycerol, then aliquot and store at -20°C or below. Avoid multiple freeze-thaw cycle_x0000_x0000_
Concentration	1.5 mg/ml (Please refer to the vial label for the specific concentration.)
Immunogen	Carrier-protein conjugated synthetic peptide encompassing a sequence within the N-terminus region of Lassa virus Nucleoprotein. The exact sequence is proprietary.
Purification	Purified by antigen-affinity chromatography.
Conjugation	Unconjugated
Note	For laboratory use only. Not for any clinical, therapeutic, or diagnostic use in humans or animals. Not for animal or human consumption.



For full product information, images and publications, please visit our [website](#).

DATA IMAGES

**GTX134873 WB Image**

Non-transfected (-) and transfected (+) 293T whole cell extracts (30 µg) were separated by -% SDS-PAGE, and the membrane was blotted with Lassa virus Nucleoprotein antibody (GTX134873) diluted at 1:5000. The HRP-conjugated anti-rabbit IgG antibody (GTX213110-01) was used to detect the primary antibody.



For full product information, images and publications, please visit our [website](#).