



# SZABO SCANDIC

Part of Europa Biosite

## Produktinformation



Forschungsprodukte & Biochemikalien



Zellkultur & Verbrauchsmaterial



Diagnostik & molekulare Diagnostik



Laborgeräte & Service

Weitere Information auf den folgenden Seiten!  
See the following pages for more information!



### Lieferung & Zahlungsart

siehe unsere [Liefer- und Versandbedingungen](#)

### Zuschläge

- Mindermengenzuschlag
- Trockeneiszuschlag
- Gefahrgutzuschlag
- Expressversand

### SZABO-SCANDIC HandelsgmbH

Quellenstraße 110, A-1100 Wien

T. +43(0)1 489 3961-0

F. +43(0)1 489 3961-7

[mail@szabo-scandic.com](mailto:mail@szabo-scandic.com)

[www.szabo-scandic.com](http://www.szabo-scandic.com)

[linkedin.com/company/szaboscandic](https://www.linkedin.com/company/szaboscandic) 

## NRF2 antibody

**Cat No. GTX135165**

<b>Host</b>	Rabbit
<b>Clonality</b>	Polyclonal
<b>Isotype</b>	IgG
<b>Application</b>	WB
<b>Reactivity</b>	Human, Mouse, Rat

**Package**  
100 µl, 25 µl

## APPLICATION

**Application Note**

\*Optimal dilutions/concentrations should be determined by the researcher.

Suggested dilution	Dilution
WB	1:500-1:3000

Not tested in other applications.

**Calculated MW** 67 kDa. ([Note](#))

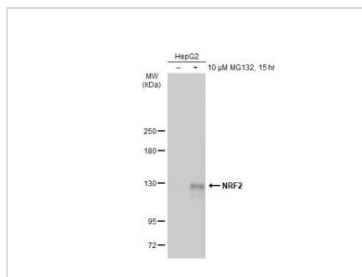
## PROPERTIES

<b>Form</b>	Liquid
<b>Buffer</b>	1XPBS, 20% Glycerol (pH7). 0.025% ProClin 300 was added as a preservative.
<b>Storage</b>	Store as concentrated solution. Centrifuge briefly prior to opening vial. For short-term storage (1-2 weeks), store at 4°C. For long-term storage, aliquot and store at -20°C or below. Avoid multiple freeze-thaw cycles.
<b>Concentration</b>	1.63 mg/ml (Please refer to the vial label for the specific concentration.)
<b>Immunogen</b>	Carrier-protein conjugated synthetic peptide encompassing a sequence within the center region of mouse NRF2. The exact sequence is proprietary.
<b>Purification</b>	Purified by antigen-affinity chromatography.
<b>Conjugation</b>	Unconjugated
<b>Note</b>	For laboratory use only. Not for any clinical, therapeutic, or diagnostic use in humans or animals. Not for animal or human consumption.

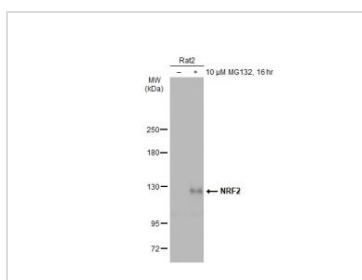


For full product information, images and publications, please visit our [website](#).

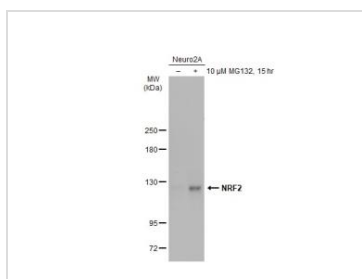
## DATA IMAGES

**GTX135165 WB Image**

Untreated (-) and treated (+) HepG2 whole cell extracts (30 μg) were separated by 5% SDS-PAGE, and the membrane was blotted with NRF2 antibody (GTX135165) diluted at 1:1000. The HRP-conjugated anti-rabbit IgG antibody (GTX213110-01) was used to detect the primary antibody.

**GTX135165 WB Image**

Untreated (-) and treated (+) Rat2 whole cell extracts (30 μg) were separated by 5% SDS-PAGE, and the membrane was blotted with NRF2 antibody (GTX135165) diluted at 1:1000. The HRP-conjugated anti-rabbit IgG antibody (GTX213110-01) was used to detect the primary antibody, and the signal was developed with Trident ECL plus-Enhanced.

**GTX135165 WB Image**

Untreated (-) and treated (+) Neuro2A whole cell extracts (30 μg) were separated by 5% SDS-PAGE, and the membrane was blotted with NRF2 antibody (GTX135165) diluted at 1:1000. The HRP-conjugated anti-rabbit IgG antibody (GTX213110-01) was used to detect the primary antibody, and the signal was developed with Trident ECL plus-Enhanced.



For full product information, images and publications, please visit our [website](#).