



SZABO SCANDIC

Part of Europa Biosite

Produktinformation



Forschungsprodukte & Biochemikalien



Zellkultur & Verbrauchsmaterial



Diagnostik & molekulare Diagnostik



Laborgeräte & Service

Weitere Information auf den folgenden Seiten!
See the following pages for more information!



Lieferung & Zahlungsart

siehe unsere [Liefer- und Versandbedingungen](#)

Zuschläge

- Mindermengenzuschlag
- Trockeneiszuschlag
- Gefahrgutzuschlag
- Expressversand

SZABO-SCANDIC HandelsgmbH

Quellenstraße 110, A-1100 Wien

T. +43(0)1 489 3961-0

F. +43(0)1 489 3961-7

mail@szabo-scandic.com

www.szabo-scandic.com

[linkedin.com/company/szaboscandic](https://www.linkedin.com/company/szaboscandic) 

SARS-CoV-2 (COVID-19) nucleocapsid protein, His tag

Cat No. GTX135592-pro**Application** ELISA, Sandwich ELISA**Species** SARS Coronavirus 2

Reference (1)

Package

100 µg

APPLICATION

Application Note

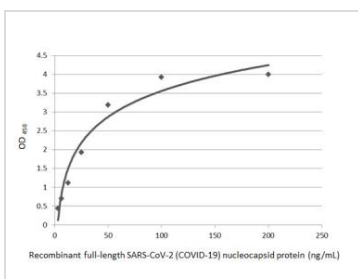
Recommended antibody pairs for sandwich ELISA: Capture: GTX635685, Detection: GTX635712 / GTX635688 / GTX635678. or Capture: GTX635679 / GTX635689, Detection: GTX635686-01. Please notice that GTX635688 / GTX635678 needs to be conjugated to HRP to function as the detection antibody when paired with GTX635685. Please contact us for custom HRP-conjugated antibody.

Calculated MW 46 kDa. ([Note](#))

PROPERTIES

Form Liquid**Buffer** PBS**Storage** Store as concentrated solution. Centrifuge briefly prior to opening vial. Aliquot and store at -20°C or below. Avoid multiple freeze-thaw cycles.**Concentration** Batch dependent (Please refer to the vial label for the specific concentration.)**Region/Sequence** C-terminal His tagged full length protein of YP_009724397.2**Expression System** HEK293 cells**Purity** >90%**Conjugation** Unconjugated**Note** For *In vitro* laboratory use only. Not for any clinical, therapeutic, or diagnostic use in humans or animals. Not for animal or human consumption.

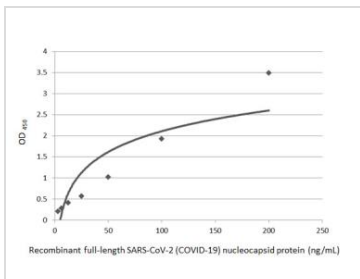
DATA IMAGES

**GTX135592-pro ELISA Image**

Sandwich ELISA detection of recombinant full-length SARS-CoV-2 (COVID-19) nucleocapsid protein, His tag protein (GTX135592-pro) using SARS-CoV-2 (COVID-19) nucleocapsid antibody [HL5410] (GTX635685) as capture antibody at concentration of 5 µg/mL and HRP-conjugated SARS-CoV-2 (COVID-19) nucleocapsid antibody [HL455] (GTX635688) as detection antibody at concentration of 1 µg/mL.

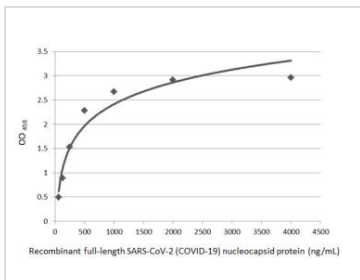


For full product information, images and publications, please visit our [website](#).



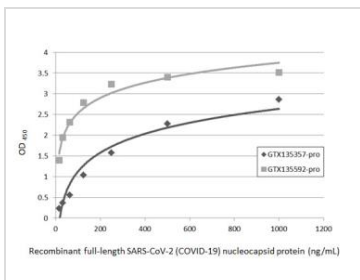
GTX135592-pro ELISA Image

Sandwich ELISA detection of recombinant full-length SARS-CoV-2 (COVID-19) nucleocapsid protein, His tag protein (GTX135592-pro) using SARS-CoV-2 (COVID-19) nucleocapsid antibody [HL5410] (GTX635685) as capture antibody at concentration of 5 µg/mL and HRP-conjugated SARS-CoV-2 (COVID-19) nucleocapsid antibody [HL249] (GTX635678) as detection antibody at concentration of 1 µg/mL.



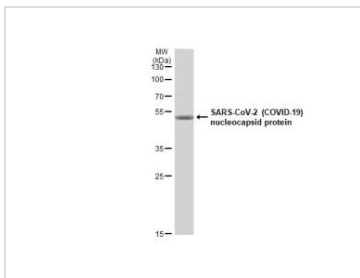
GTX135592-pro ELISA Image

Indirect ELISA analysis was performed by coating plate with 50 µL of recombinant full-length SARS-CoV-2 (COVID-19) nucleocapsid protein (GTX135592-pro) at concentrations ranging from 0.0625 µg/mL to 4 µg/mL. The coated protein is detected with SARS-CoV-2 (COVID-19) nucleocapsid antibody (GTX135361) at 1 µg/mL. Rabbit IgG antibody (HRP) (GTX213110-01) was diluted at 1:10000 and used to detect the primary antibody.



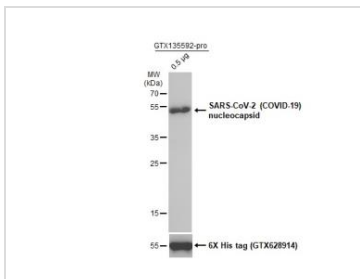
GTX135592-pro ELISA Image

Indirect ELISA analysis was performed by coating plate with 50 µL of recombinant full-length SARS-CoV-2 (COVID-19) nucleocapsid protein (GTX135357-pro) and (GTX135592-pro) at concentrations ranging from 0.015 µg/mL to 1 µg/mL. The coated protein is detected with SARS-CoV-2 (COVID-19) nucleocapsid antibody (GTX135357) at 1 µg/mL. Rabbit IgG antibody (HRP) (GTX213110-01) was diluted at 1:10000 and used to detect the primary antibody.



GTX135592-pro Image

0.5 µg of GTX135592-pro SARS-CoV-2 (COVID-19) nucleocapsid protein analyzed using SDS-PAGE and stained with coomassie blue and captured by monochrome camera.



GTX135592-pro Image

SARS-CoV-2 (COVID-19) nucleocapsid protein (GTX135592-pro, 0.5 µg) was separated by 12% SDS-PAGE, and the membrane was blotted with SARS-CoV / SARS-CoV-2 (COVID-19) nucleocapsid antibody [6H3] (GTX632269) diluted at 1:5000. The HRP-conjugated anti-mouse IgG antibody (GTX213111-01) was used to detect the primary antibody.



For full product information, images and publications, please visit our [website](#).