



SZABO SCANDIC

Part of Europa Biosite

Produktinformation



Forschungsprodukte & Biochemikalien



Zellkultur & Verbrauchsmaterial



Diagnostik & molekulare Diagnostik



Laborgeräte & Service

Weitere Information auf den folgenden Seiten!
See the following pages for more information!



Lieferung & Zahlungsart

siehe unsere [Liefer- und Versandbedingungen](#)

Zuschläge

- Mindermengenzuschlag
- Trockeneiszuschlag
- Gefahrgutzuschlag
- Expressversand

SZABO-SCANDIC HandelsgmbH

Quellenstraße 110, A-1100 Wien

T. +43(0)1 489 3961-0

F. +43(0)1 489 3961-7

mail@szabo-scandic.com

www.szabo-scandic.com

[linkedin.com/company/szaboscandic](https://www.linkedin.com/company/szaboscandic) 

SARS-CoV-2 (COVID-19) 3CLpro (nsp5) protein, His tag

Cat No. GTX135648-pro**Species** SARS Coronavirus 2**Package**

500 µg, 100 µg

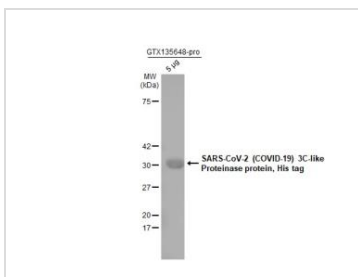
APPLICATION

Calculated MW 34 kDa. ([Note](#))

PROPERTIES

Form Liquid**Buffer** PBS**Storage** Store as concentrated solution. Aliquot and store at -20°C or below. Avoid freeze-thaw cycles.**Concentration** Batch dependent (Please refer to the vial label for the specific concentration).**Region/Sequence** N-terminal His tagged full length protein of YP_009725301.1.**Expression System** E. Coli**Purity** >90%**Conjugation** Unconjugated**Note** For *In vitro* laboratory use only. Not for any clinical, therapeutic, or diagnostic use in humans or animals. Not for animal or human consumption.

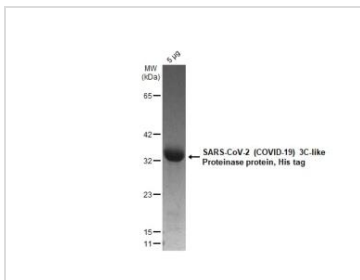
DATA IMAGES

**GTX135648-pro Image**

SARS-CoV-2 (COVID-19) 3C-like Proteinase protein, His tag (GTX135648-pro, 5 µg) was separated by 12% SDS-PAGE, and the membrane was blotted with 6X His tag antibody [GT359] (GTX628914) diluted at 1:5000. The HRP-conjugated anti-mouse IgG antibody (GTX213111-01) was used to detect the primary antibody.



For full product information, images and publications, please visit our [website](#).

**GTX135648-pro Image**

5 μ g of GTX135648-pro SARS-CoV-2 (COVID-19) 3C-like Proteinase protein, His tag protein analyzed using SDS-PAGE and stained with coomassie blue and captured by monochrome camera.



For full product information, images and publications, please visit our [website](#).