



SZABO SCANDIC

Part of Europa Biosite

Produktinformation



Forschungsprodukte & Biochemikalien



Zellkultur & Verbrauchsmaterial



Diagnostik & molekulare Diagnostik



Laborgeräte & Service

Weitere Information auf den folgenden Seiten!
See the following pages for more information!



Lieferung & Zahlungsart

siehe unsere [Liefer- und Versandbedingungen](#)

Zuschläge

- Mindermengenzuschlag
- Trockeneiszuschlag
- Gefahrgutzuschlag
- Expressversand

SZABO-SCANDIC HandelsgmbH

Quellenstraße 110, A-1100 Wien

T. +43(0)1 489 3961-0

F. +43(0)1 489 3961-7

mail@szabo-scandic.com

www.szabo-scandic.com

[linkedin.com/company/szaboscandic](https://www.linkedin.com/company/szaboscandic) 

Human ACE2 (ECD) protein, mouse IgG Fc tag (active)

Cat No. GTX135683-pro**Application** ELISA, Functional Assay**Species** Human**Package**

100 µg

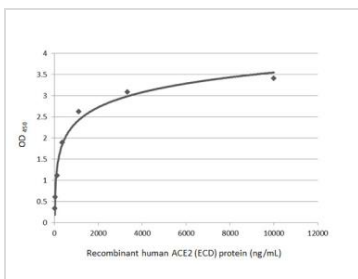
APPLICATION

Calculated MW 92 kDa. ([Note](#))

PROPERTIES

Form Lyophilized powder**Buffer** Lyophilized from PBS buffer. Reconstitute with distilled water.**Storage** Store at 4°C or below. After reconstitution, keep as concentrated solution. For short-term storage (1-2 weeks), store at 4°C. For long-term storage, aliquot and store at -20°C or below. Avoid multiple freeze-thaw cycles.**Region/Sequence** Human ACE2 of NP_068576.1 (Met1-Ser740) with the Fc region of mouse IgG1 at the C-terminus**Expression System** HEK293 cells**Purity** >90%**Conjugation** Unconjugated**Note** For laboratory use only. Not for any clinical, therapeutic, or diagnostic use in humans or animals. Not for animal or human consumption.

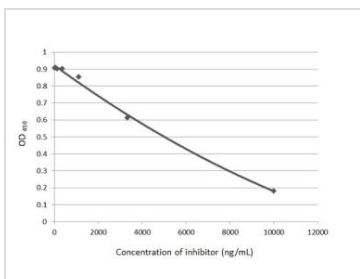
DATA IMAGES

**GTX135683-pro ELISA Image**

Functional ELISA analysis of immobilized recombinant SARS-CoV-2 (COVID-19) Spike RBD protein, His tag (active) (GTX01546-pro) (coated at 2 µg/mL) binding to soluble recombinant Human ACE2 (ECD) protein, mouse IgG Fc tag (GTX135683-pro) (4.5-10000 ng/mL). Bound protein was detected by ACE2 antibody [N1N2], N-term (GTX101395) (0.5 µg/mL) and Rabbit IgG antibody (HRP) (GTX213110-01) (1:10000) detected bound primary antibody.

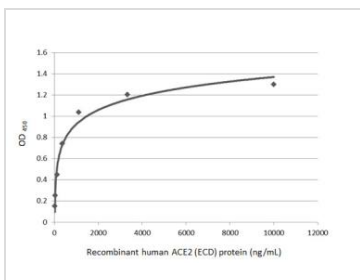


For full product information, images and publications, please visit our [website](#).



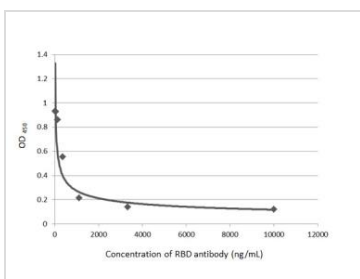
GTX135683-pro ELISA Image

Inhibition analysis of immobilized recombinant SARS-CoV-2 (COVID-19) Spike S1 protein, His tag (active) (GTX01554-pro) (coated at 2 µg/mL) binding to soluble recombinant Human ACE2 (ECD) protein, mouse IgG Fc tag (GTX135683-pro) (1000 ng/mL). ACE2 binding was inhibited by increasing concentrations of SARS-CoV-2 (COVID-19) Spike RBD antibody (GTX135709) (14-10000 ng/mL). Bound ACE2 protein was detected by Goat Anti-Mouse IgG antibody (HRP) (GTX213111-01) (1:10000).



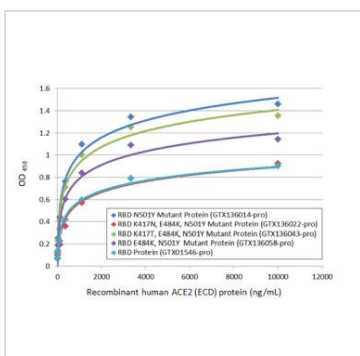
GTX135683-pro Functional Assay Image

Functional ELISA analysis of immobilized recombinant SARS-CoV-2 spike (trimer) (coated at 2 µg/mL) binding to soluble recombinant Human ACE2 (ECD) protein, mouse IgG Fc tag (GTX135683-pro) (14-10000 ng/mL). Bound protein was detected by Goat Anti-Mouse IgG antibody (HRP) (GTX213111-01) (1:10000).



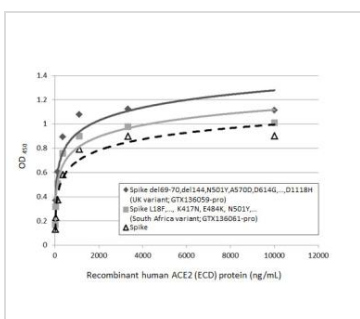
GTX135683-pro Functional Assay Image

Inhibition analysis of immobilized recombinant SARS-CoV-2 (COVID-19) Spike RBD protein, His tag (active) (GTX01546-pro) (coated at 2 µg/mL) binding to soluble recombinant Human ACE2 (ECD) protein, mouse IgG Fc tag (GTX135683-pro) (1000 ng/mL). ACE2 binding was inhibited by increasing concentrations of SARS-CoV-2 (COVID-19) Spike RBD antibody [HL1004] (GTX635793) (14-10000 ng/mL). Bound ACE2 was detected by Goat Anti-Mouse IgG antibody (HRP) (GTX213111-01) (1:10000).



GTX135683-pro Functional Assay Image

Functional ELISA analysis of immobilized recombinant SARS-CoV-2 (COVID-19) Spike RBD (N501Y Mutant) protein, His tag (active) (GTX136014-pro), SARS-CoV-2 (COVID-19) Spike RBD (K417N, E484K, N501Y Mutant) protein, His tag (active) (GTX136022-pro), SARS-CoV-2 (COVID-19) Spike RBD (K417T, E484K, N501Y Mutant) protein, His tag (active) (GTX136043-pro), SARS-CoV-2 (COVID-19) Spike RBD (E484K, N501Y Mutant) protein, His tag (active) (GTX136058-pro) and SARS-CoV-2 (COVID-19) Spike RBD protein, His tag (active) (GTX01546-pro) (coated at 2 µg/mL) binding to soluble recombinant Human ACE2 (ECD) protein, mouse IgG Fc tag (active) (GTX135683-pro) (13-10000 ng/mL). Bound protein was detected by Goat Anti-Mouse IgG antibody (HRP) (GTX213111-01) (1:10000).



GTX135683-pro Functional Assay Image

Functional ELISA analysis of immobilized recombinant SARS-CoV-2 (COVID-19) Spike (del69-70,del144,N501Y,A570D,D614G,...,D1118H) (ECD) Protein, His tag (active) (UK variant) (GTX136059-pro), SARS-CoV-2 (COVID-19) Spike (L18F,..., K417N, E484K, N501Y,...)(ECD) Protein, His tag (active) (South Africa variant) (GTX136061-pro) and SARS-CoV-2 (COVID-19) Spike Protein (Wild type) (coated at 2 µg/mL) binding to soluble recombinant Human ACE2 (ECD) protein, mouse IgG Fc tag (active) (GTX135683-pro) (14-10000 ng/mL). Bound protein was detected by Goat Anti-Mouse IgG antibody (HRP) (GTX213111-01) (1:10000).



For full product information, images and publications, please visit our [website](https://www.genetex.com).