



SZABO SCANDIC

Part of Europa Biosite

Produktinformation



Forschungsprodukte & Biochemikalien



Zellkultur & Verbrauchsmaterial



Diagnostik & molekulare Diagnostik



Laborgeräte & Service

Weitere Information auf den folgenden Seiten!
See the following pages for more information!



Lieferung & Zahlungsart

siehe unsere [Liefer- und Versandbedingungen](#)

Zuschläge

- Mindermengenzuschlag
- Trockeneiszuschlag
- Gefahrgutzuschlag
- Expressversand

SZABO-SCANDIC HandelsgmbH

Quellenstraße 110, A-1100 Wien

T. +43(0)1 489 3961-0

F. +43(0)1 489 3961-7

mail@szabo-scandic.com

www.szabo-scandic.com

[linkedin.com/company/szaboscandic](https://www.linkedin.com/company/szaboscandic) 

SARS-CoV-2 (COVID-19) Spike S2 (ECD) protein, mouse IgG Fc tag

Cat No. GTX135684-pro

Application	WB, ELISA, Sandwich ELISA
Species	SARS Coronavirus 2

Package
100 µg

APPLICATION

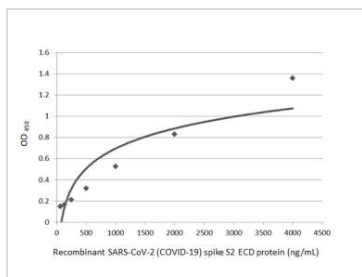
Application Note

Recommended antibody pair for sandwich ELISA:
Capture: GTX632604, Detection: GTX635693.

PROPERTIES

Form	Liquid
Buffer	PBS
Storage	Store as concentrated solution. Aliquot and store at -20°C or below. Avoid freeze-thaw cycles.
Concentration	Batch dependent (Please refer to the vial label for the specific concentration.)
Region/Sequence	SARS-CoV-2 Spike of YP_009724390.1 (686-1213 a.a, extracellular domain of Spike S2) with the Fc region of mouse IgG1 at the C-terminus
Expression System	HEK293 cells
Purity	>90%
Conjugation	Unconjugated
Note	For <i>In vitro</i> laboratory use only. Not for any clinical, therapeutic, or diagnostic use in humans or animals. Not for animal or human consumption.

DATA IMAGES

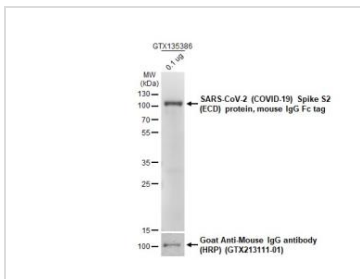


GTX135684-pro ELISA Image

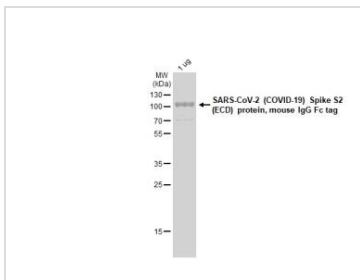
Sandwich ELISA detection of recombinant SARS-CoV-2 (COVID-19) Spike S2 (ECD) protein, mouse IgG Fc tag protein (GTX135684-pro) using SARS-CoV / SARS-CoV-2 (COVID-19) spike antibody [1A9] (GTX632604) as capture antibody at concentration of 5 µg/mL and SARS-CoV-2 (COVID-19) Spike S2 antibody [HL237] (GTX635693) as detection antibody at concentration of 1 µg/mL. Rabbit IgG antibody (HRP) (GTX213110-01) was diluted at 1:10000 and used to detect the primary antibody.



For full product information, images and publications, please visit our [website](#).


GTX135684-pro WB Image

SARS-CoV-2 (COVID-19) Spike S2 (ECD) protein, mouse IgG Fc tag (1 µg) was separated by 12% SDS-PAGE, and the membrane was blotted with SARS-CoV-2 (COVID-19) Spike S2 / S2' antibody (GTX135386) diluted at 1:2500. The HRP-conjugated anti-rabbit IgG antibody (GTX213110-01) was used to detect the primary antibody.


GTX135684-pro Image

1µg of GTX135684-pro SARS-CoV-2 (COVID-19) Spike S2 (ECD) protein, mouse IgG Fc tag protein analyzed using SDS-PAGE and stained with coomassie blue and captured by monochrome camera.



For full product information, images and publications, please visit our [website](#).