



# SZABO SCANDIC

Part of Europa Biosite

## Produktinformation



Forschungsprodukte & Biochemikalien



Zellkultur & Verbrauchsmaterial



Diagnostik & molekulare Diagnostik



Laborgeräte & Service

Weitere Information auf den folgenden Seiten!  
See the following pages for more information!



### Lieferung & Zahlungsart

siehe unsere [Liefer- und Versandbedingungen](#)

### Zuschläge

- Mindermengenzuschlag
- Trockeneiszuschlag
- Gefahrgutzuschlag
- Expressversand

### SZABO-SCANDIC HandelsgmbH

Quellenstraße 110, A-1100 Wien

T. +43(0)1 489 3961-0

F. +43(0)1 489 3961-7

[mail@szabo-scandic.com](mailto:mail@szabo-scandic.com)

[www.szabo-scandic.com](http://www.szabo-scandic.com)

[linkedin.com/company/szaboscandic](https://www.linkedin.com/company/szaboscandic) 

## Tau (phospho Thr181) antibody

**Cat. No. GTX135776**

<b>Host</b>	Rabbit
<b>Clonality</b>	Polyclonal
<b>Isotype</b>	IgG
<b>Application</b>	WB, IHC-P
<b>Reactivity</b>	Human, Mouse, Rat

**Package**  
100 µl, 25 µl

## APPLICATION

**Application Note**

\*Optimal dilutions/concentrations should be determined by the researcher.

Suggested dilution	Recommended dilution
WB	1:500-1:3000
IHC-P	Assay dependent

Not tested in other applications.

<b>Calculated MW</b>	79 kDa. ( <a href="#">Note</a> )
<b>Observed MW</b>	50~80 kDa.

## PROPERTIES

<b>Form</b>	Liquid
<b>Buffer</b>	1XPBS (pH7), 1% BSA, 20% Glycerol
<b>Preservative</b>	0.025% ProClin 300
<b>Storage</b>	Store as concentrated solution. Centrifuge briefly prior to opening vial. For short-term storage (1-2 weeks), store at 4°C. For long-term storage, aliquot and store at -20°C or below. Avoid multiple freeze-thaw cycles.
<b>Concentration</b>	1.14 mg/ml (Please refer to the vial label for the specific concentration.)
<b>Immunogen</b>	Carrier-protein conjugated synthetic peptide surrounding phospho Thr181 of human Tau. The exact sequence is proprietary.
<b>Purification</b>	Purified by antigen-affinity chromatography.
<b>Conjugation</b>	Unconjugated

**Note**

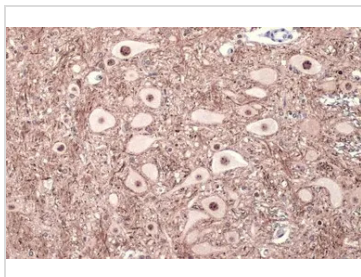
For laboratory research use only. Not for any clinical, therapeutic, or diagnostic use in humans or animals. Not for animal or human consumption.

Purchasers shall not, and agree not to enable third parties to, analyze, copy, reverse engineer or otherwise attempt to determine the structure or sequence of the product.



For full product information, images and publications, please visit our [website](#).

## DATA IMAGES

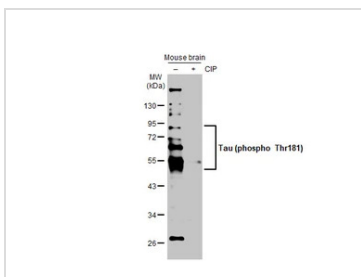
**GTX135776 IHC-P Image**

Tau (phospho Thr181) antibody detects Tau (phospho Thr181) protein at cell membrane and cytoplasm by immunohistochemical analysis.

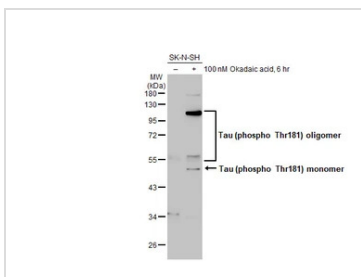
Sample: Paraffin-embedded rat brain.

Tau (phospho Thr181) stained by Tau (phospho Thr181) antibody (GTX135776) diluted at 1:500.

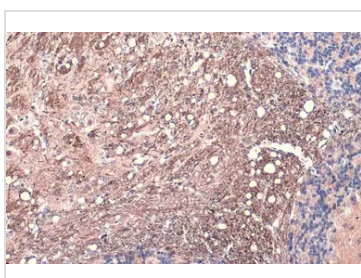
Antigen Retrieval: Citrate buffer, pH 6.0, 15 min

**GTX135776 WB Image**

Untreated (-) and treated (+) Mouse tissue extracts (50 µg) were separated by 10% SDS-PAGE, and the membrane was blotted with Tau (phospho Thr181) antibody (GTX135776) diluted at 1:500. The HRP-conjugated anti-rabbit IgG antibody (GTX213110-01) was used to detect the primary antibody.

**GTX135776 WB Image**

Untreated (-) and treated (+) SK-N-SH whole cell extracts (50 µg) were separated by 10% SDS-PAGE, and the membrane was blotted with Tau (phospho Thr181) antibody (GTX135776) diluted at 1:500. The HRP-conjugated anti-rabbit IgG antibody (GTX213110-01) was used to detect the primary antibody.

**GTX135776 IHC-P Image**

Tau (phospho Thr181) antibody detects Tau (phospho Thr181) protein at cell membrane and cytoplasm by immunohistochemical analysis.

Sample: Paraffin-embedded mouse brain.

Tau (phospho Thr181) stained by Tau (phospho Thr181) antibody (GTX135776) diluted at 1:500.

Antigen Retrieval: Citrate buffer, pH 6.0, 15 min



For full product information, images and publications, please visit our [website](https://www.genetex.com).