



SZABO SCANDIC

Part of Europa Biosite

Produktinformation



Forschungsprodukte & Biochemikalien



Zellkultur & Verbrauchsmaterial



Diagnostik & molekulare Diagnostik



Laborgeräte & Service

Weitere Information auf den folgenden Seiten!
See the following pages for more information!



Lieferung & Zahlungsart

siehe unsere [Liefer- und Versandbedingungen](#)

Zuschläge

- Mindermengenzuschlag
- Trockeneiszuschlag
- Gefahrgutzuschlag
- Expressversand

SZABO-SCANDIC HandelsgmbH

Quellenstraße 110, A-1100 Wien

T. +43(0)1 489 3961-0

F. +43(0)1 489 3961-7

mail@szabo-scandic.com

www.szabo-scandic.com

[linkedin.com/company/szaboscandic](https://www.linkedin.com/company/szaboscandic) 

SARS-CoV-2 (COVID-19) Spike S1 protein, His tag (active)

Cat No. GTX135817-pro

Application	WB, ELISA, Functional Assay, Sandwich ELISA
Species	SARS Coronavirus 2

Package
100 µg

APPLICATION

Application Note

Recommended antibody pair for sandwich ELISA:

Capture: GTX635807, Detection: GTX635792.

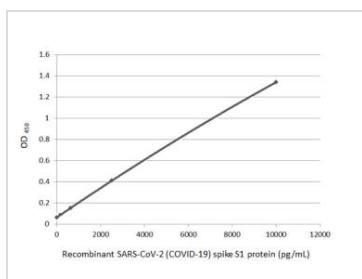
Please notice that GTX635792 needs to be conjugated to HRP to function as the detection antibody when paired with GTX635807. Please contact us for custom HRP-conjugated antibody.

PROPERTIES

Form	Liquid
Buffer	PBS
Storage	Store as concentrated solution. Aliquot and store at -20°C or below. Avoid freeze-thaw cycles.
Concentration	Batch dependent (Please refer to the vial label for the specific concentration.)
Region/Sequence	SARS-CoV-2 Spike of QHD43416.1 (1-685 a.a) with His tag at the C-terminus
Expression System	HEK293 cells
Purity	>90%
Conjugation	Unconjugated

Note For *In vitro* laboratory use only. Not for any clinical, therapeutic, or diagnostic use in humans or animals. Not for animal or human consumption.

DATA IMAGES

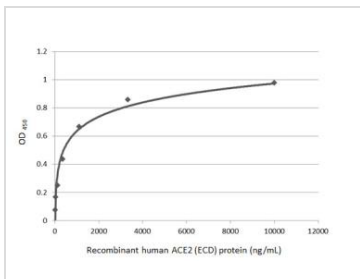


GTX135817-pro ELISA Image

Sandwich ELISA detection of recombinant SARS-CoV-2 (COVID-19) Spike S1 protein, His tag (active) protein (GTX135817-pro) using SARS-CoV-2 (COVID-19) Spike RBD antibody [HL1014] (GTX635807) as capture antibody at concentration of 5 µg/mL and SARS-CoV-2 (COVID-19) Spike RBD antibody [HL1003] (HRP) (GTX635792-01) as detection antibody at concentration of 1 µg/mL.

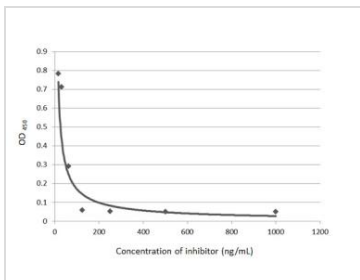


For full product information, images and publications, please visit our [website](#).



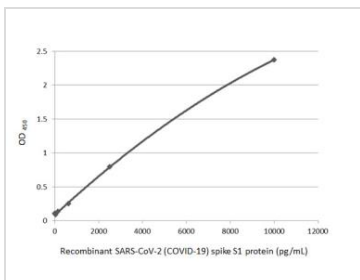
GTX135817-pro Functional Assay Image

Functional ELISA analysis of immobilized recombinant SARS-CoV-2 (COVID-19) Spike S1 protein, His tag (active) (GTX135817-pro) (coated at 2 µg/mL) binding to soluble recombinant Human ACE2 (ECD) protein, mouse IgG Fc tag (GTX135683-pro) (14-10000 ng/mL). Bound protein was detected by Goat Anti-Mouse IgG antibody (HRP) (GTX213111-01) (1:10000).



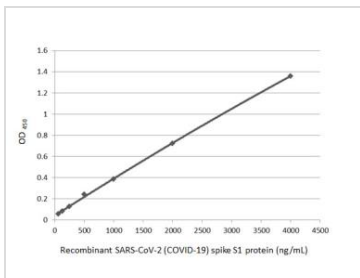
GTX135817-pro Functional Assay Image

Inhibition analysis of immobilized recombinant SARS-CoV-2 (COVID-19) Spike S1 protein, His tag (active) (GTX135817-pro) (coated at 2 µg/mL) binding to soluble recombinant Human ACE2 (ECD) protein, mouse IgG Fc tag (GTX135683-pro) (3000 ng/mL). ACE2 binding was inhibited by increasing concentrations of SARS-CoV-2 (COVID-19) Spike RBD antibody [HL1003] (GTX635792) (14-10000 ng/mL). Bound ACE2 protein was detected by Goat Anti-Mouse IgG antibody (HRP) (GTX213111-01) (1:10000).



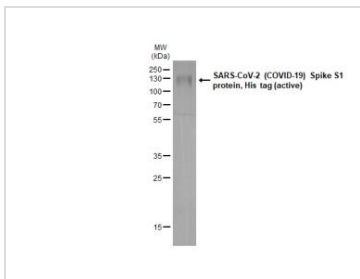
GTX135817-pro ELISA Image

Sandwich ELISA detection of recombinant SARS-CoV-2 (COVID-19) Spike S1 protein, His tag (active) (GTX135817-pro) using SARS-CoV-2 (COVID-19) Spike RBD antibody [HL1014] (GTX635807) as capture antibody at concentration of 5 µg/mL and HRP-conjugated SARS-CoV-2 (COVID-19) Spike RBD antibody [HL1003] (GTX635792) as detection antibody at concentration of 1 µg/mL.



GTX135817-pro ELISA Image

Indirect ELISA analysis performed by coating plate with recombinant SARS-CoV-2 (COVID-19) Spike S1 protein, His tag (active) protein (GTX135817-pro) (4000-62.5 ng/mL). Coated protein probed with SARS-CoV-2 (COVID-19) Spike S1 antibody (GTX135384) (1 µg/mL). Rabbit IgG antibody (HRP) (GTX213110-01) (1:10000) detected bound primary antibody.



GTX135817-pro Image

1 µg of GTX135817-pro SARS-CoV-2 (COVID-19) Spike S1 protein, His tag (active) analyzed using SDS-PAGE and stained with coomassie blue and captured by monochrome camera.



For full product information, images and publications, please visit our [website](#).