



# SZABO SCANDIC

Part of Europa Biosite

## Produktinformation



Forschungsprodukte & Biochemikalien



Zellkultur & Verbrauchsmaterial



Diagnostik & molekulare Diagnostik



Laborgeräte & Service

Weitere Information auf den folgenden Seiten!  
See the following pages for more information!



### Lieferung & Zahlungsart

siehe unsere [Liefer- und Versandbedingungen](#)

### Zuschläge

- Mindermengenzuschlag
- Trockeneiszuschlag
- Gefahrgutzuschlag
- Expressversand

### SZABO-SCANDIC HandelsgmbH

Quellenstraße 110, A-1100 Wien

T. +43(0)1 489 3961-0

F. +43(0)1 489 3961-7

[mail@szabo-scandic.com](mailto:mail@szabo-scandic.com)

[www.szabo-scandic.com](http://www.szabo-scandic.com)

[linkedin.com/company/szaboscandic](https://www.linkedin.com/company/szaboscandic) 

## Influenza B virus Nucleoprotein antibody

**Cat. No. GTX135819**

<b>Host</b>	Rabbit
<b>Clonality</b>	Polyclonal
<b>Isotype</b>	IgG
<b>Application</b>	WB, ICC/IF, IHC-P, IHC-P (cell pellet)
<b>Reactivity</b>	Influenza B virus

Reference ( 1 )  
 Package  
 100 µl, 25 µl

## APPLICATION

**Application Note**

\*Optimal dilutions/concentrations should be determined by the researcher.

Suggested dilution	Recommended dilution
WB	1:5000-1:110000
ICC/IF	Assay dependent
IHC-P	Assay dependent
IHC-P (cell pellet)	Assay dependent

Not tested in other applications.

## PROPERTIES

<b>Form</b>	Liquid
<b>Buffer</b>	1XPBS (pH7), 20% Glycerol
<b>Preservative</b>	0.025% ProClin 300
<b>Storage</b>	Store as concentrated solution. Centrifuge briefly prior to opening vial. For short-term storage (1-2 weeks), store at 4°C. For long-term storage, aliquot and store at -20°C or below. Avoid multiple freeze-thaw cycles.
<b>Concentration</b>	1 mg/ml (Please refer to the vial label for the specific concentration.)
<b>Immunogen</b>	Recombinant protein encompassing a sequence within the C-terminus region of Influenza B virus Nucleoprotein (B/Victoria/02/1987). The exact sequence is proprietary.
<b>Purification</b>	Purified by antigen-affinity chromatography.
<b>Conjugation</b>	Unconjugated

**Note**

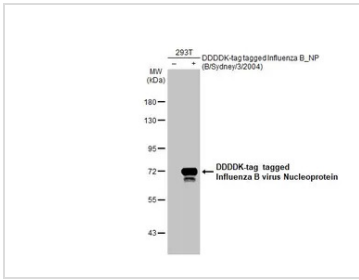
For laboratory research use only. Not for any clinical, therapeutic, or diagnostic use in humans or animals. Not for animal or human consumption.

Purchasers shall not, and agree not to enable third parties to, analyze, copy, reverse engineer or otherwise attempt to determine the structure or sequence of the product.



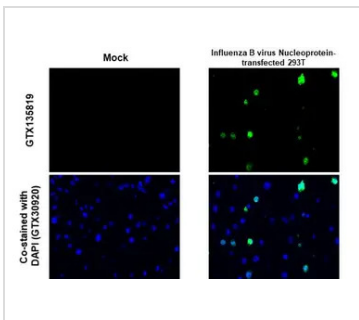
For full product information, images and publications, please visit our [website](#).

DATA IMAGES



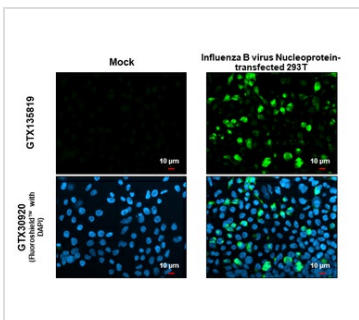
**GTX135819 WB Image**

Non-transfected (-) and transfected (+) 293T whole cell extracts (30 µg) were separated by 7.5% SDS-PAGE, and the membrane was blotted with Influenza B virus Nucleoprotein antibody (GTX135819) diluted at 1:110000. The HRP-conjugated anti-rabbit IgG antibody (GTX213110-01) was used to detect the primary antibody.



**GTX135819 IHC-P (cell pellet) Image**

Influenza B virus Nucleoprotein antibody detects Influenza B virus Nucleoprotein protein at cytoplasm by immunohistochemical analysis.  
 Sample: Mock (GTX435670) and Influenza B virus Nucleoprotein transfected 293T cell FFPE Cell Pellet Block.  
 Green: Influenza B virus Nucleoprotein stained by Influenza B virus Nucleoprotein antibody (GTX135819) diluted at 1:1000.  
 Blue: Fluoroshield with DAPI (GTX30920).  
 Antigen Retrieval: Citrate buffer, pH 6.0, 15 min



**GTX135819 ICC/IF Image**

Influenza B virus Nucleoprotein antibody detects Influenza B virus Nucleoprotein protein at cytoplasm by immunofluorescent analysis.  
 Sample: Mock and transfected 293T cells were fixed in 4% paraformaldehyde at RT for 15 min.  
 Green: Influenza B virus Nucleoprotein stained by Influenza B virus Nucleoprotein antibody (GTX135819) diluted at 1:500.  
 Blue: Fluoroshield with DAPI (GTX30920).  
 Scale bar= 10µm.



For full product information, images and publications, please visit our [website](#).