



SZABO SCANDIC

Part of Europa Biosite

Produktinformation



Forschungsprodukte & Biochemikalien



Zellkultur & Verbrauchsmaterial



Diagnostik & molekulare Diagnostik



Laborgeräte & Service

Weitere Information auf den folgenden Seiten!
See the following pages for more information!



Lieferung & Zahlungsart

siehe unsere [Liefer- und Versandbedingungen](#)

Zuschläge

- Mindermengenzuschlag
- Trockeneiszuschlag
- Gefahrgutzuschlag
- Expressversand

SZABO-SCANDIC HandelsgmbH

Quellenstraße 110, A-1100 Wien

T. +43(0)1 489 3961-0

F. +43(0)1 489 3961-7

mail@szabo-scandic.com

www.szabo-scandic.com

[linkedin.com/company/szaboscandic](https://www.linkedin.com/company/szaboscandic) 

Human IL6 protein, His tag

Cat. No. GTX135982-pro

Application	ELISA, Sandwich ELISA
Species	Human

Package
100 µg

APPLICATION

Application Note

Recommended antibody pairs for sandwich ELISA: Capture : GTX636571 / GTX636573, Detection : GTX636473 / GTX638598.

Calculated MW 24 kDa. ([Note](#))

PROPERTIES

Form	Liquid
Buffer	PBS
Preservative	No Preservative
Storage	Store as concentrated solution. Centrifuge briefly prior to opening vial. Aliquot and store at -20°C or below. Avoid multiple freeze-thaw cycles.
Concentration	1 mg/ml (Please refer to the vial label for the specific concentration.)
Region/Sequence	C-terminal His tagged Human IL-6 protein of NP_000591.1.
Expression System	HEK293 cells
Purity	>95%
Conjugation	Unconjugated

Note

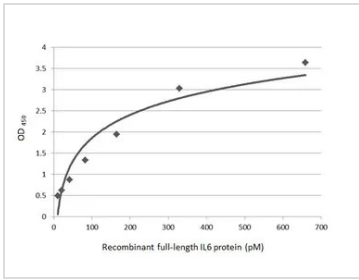
For laboratory research use only. Not for any clinical, therapeutic, or diagnostic use in humans or animals. Not for animal or human consumption.

Purchasers shall not, and agree not to enable third parties to, analyze, copy, reverse engineer or otherwise attempt to determine the structure or sequence of the product.



For full product information, images and publications, please visit our [website](#).

DATA IMAGES

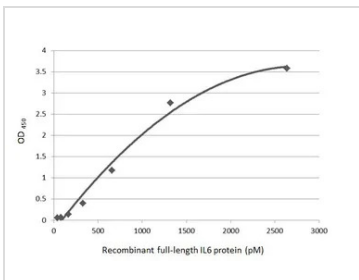


GTX135982-pro ELISA Image

Sandwich ELISA detection of recombinant Human IL6 protein, His tag (GTX135982-pro) using antibodies as below.

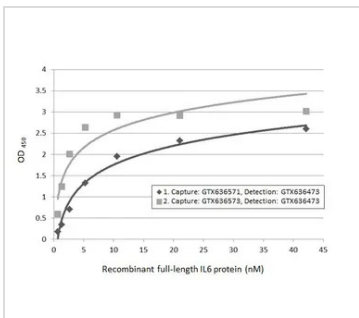
Capture: IL6 antibody [GT1535] (GTX636571) (5 µg/mL)

Detection: IL6 antibody [HL2389] (GTX638598) (1 µg/mL)



GTX135982-pro ELISA Image

Indirect ELISA analysis was performed by coating the plate with recombinant Human IL6 protein, His tag (GTX135982-pro) (2634.91-41.32 pM). Coated protein was probed with IL6 antibody [HL2389] (GTX638598) (1 µg/mL). Goat anti-rabbit IgG antibody (HRP) (GTX213110-01) (1:10000) was used to detect the bound primary antibody.



GTX135982-pro ELISA Image

Sandwich ELISA detection of Human IL6 protein, His tag (GTX135982-pro) using ELISA pairs below.

Pair 1:

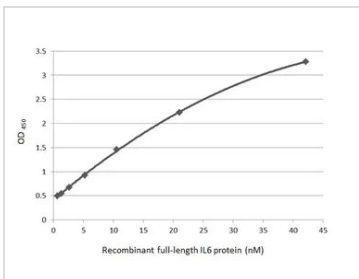
Capture: IL6 antibody [GT519-1] (GTX636573) (5 µg/mL)

Detection: IL6 antibody [HL1168] (GTX636473) (1 µg/mL)

Pair 2:

Capture: IL6 antibody [GT1535] (GTX636571) (5 µg/mL)

Detection: IL6 antibody [HL1168] (GTX636473) (1 µg/mL)



GTX135982-pro ELISA Image

Sandwich ELISA detection of recombinant Human IL6 protein, His tag (GTX135982-pro) using antibodies as below.

Capture: IL6 antibody [GT519-1] (GTX636573) (5 µg/mL)

Detection: IL6 antibody [HL2389] (GTX638598) (1 µg/mL)



For full product information, images and publications, please visit our [website](#).