



# SZABO SCANDIC

Part of Europa Biosite

## Produktinformation



Forschungsprodukte & Biochemikalien



Zellkultur & Verbrauchsmaterial



Diagnostik & molekulare Diagnostik



Laborgeräte & Service

Weitere Information auf den folgenden Seiten!  
See the following pages for more information!



### Lieferung & Zahlungsart

siehe unsere [Liefer- und Versandbedingungen](#)

### Zuschläge

- Mindermengenzuschlag
- Trockeneiszuschlag
- Gefahrgutzuschlag
- Expressversand

### SZABO-SCANDIC HandelsgmbH

Quellenstraße 110, A-1100 Wien

T. +43(0)1 489 3961-0

F. +43(0)1 489 3961-7

[mail@szabo-scandic.com](mailto:mail@szabo-scandic.com)

[www.szabo-scandic.com](http://www.szabo-scandic.com)

[linkedin.com/company/szaboscandic](https://www.linkedin.com/company/szaboscandic) 

# SARS-CoV-2 (COVID-19) Spike RBD Protein, B.1.617.1 / Kappa variant, His tag (active)

## Cat. No. GTX136299-pro

**Application** Binding Assay, WB, ELISA, Sandwich ELISA

**Species** SARS Coronavirus 2

**Package**

100 µg

### PROPERTIES

**Form** Liquid

**Buffer** PBS

**Preservative** No Preservative

**Storage** Store as concentrated solution. Centrifuge briefly prior to opening vial. Aliquot and store at -20°C or below. Avoid multiple freeze-thaw cycles.

**Concentration** 0.62 mg/ml (Please refer to the vial label for the specific concentration.)

**Region/Sequence** SARS-CoV-2 Spike RBD of QHD43416.1 (319-541 a.a) with L452R and E484Q mutations and His tag at the C-terminus

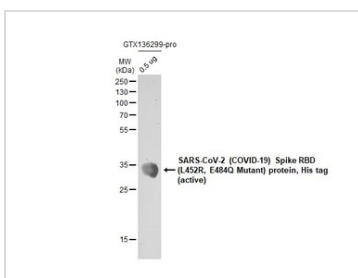
**Expression System** HEK293 cells

**Purity** >95%

**Conjugation** Unconjugated

**Note** For *In vitro* laboratory use only. Not for any clinical, therapeutic, or diagnostic use in humans or animals. Not for animal or human consumption.

### DATA IMAGES

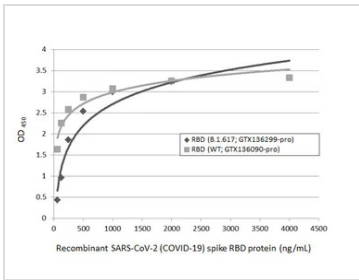


#### GTX136299-pro WB Image

SARS-CoV-2 (COVID-19) Spike RBD (L452R, E484Q Mutant) protein, His tag (active) protein (GTX136299-pro, 0.5 µg) was separated by 12% SDS-PAGE, and the membrane was blotted with the SARS-CoV-2 (COVID-19) Spike RBD antibody [HL257] (GTX635692) diluted at 1:5000.

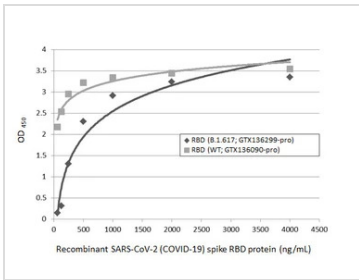


For full product information, images and publications, please visit our [website](https://www.genetex.com).



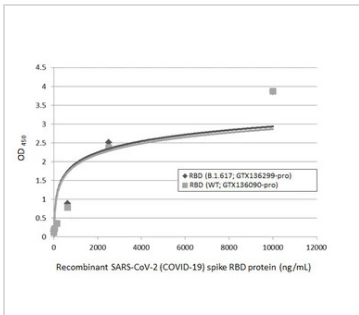
**GTX136299-pro ELISA Image**

Indirect ELISA analysis performed by coating plate with recombinant SARS-CoV-2 (COVID-19) Spike RBD (L452R, E484Q Mutant) protein, His tag (active) (Indian variant) (GTX136299-pro) and SARS-CoV-2 (COVID-19) Spike RBD protein, His tag (active) (Wild type) (GTX136090-pro) (4000-62.5 ng/mL). Coated protein was probed with SARS-CoV-2 (COVID-19) Spike RBD antibody [HL1004] (GTX635793) (1 µg/mL). Rabbit IgG antibody (HRP) (GTX213110-01) (1:10000) was used to detect bound primary antibody.



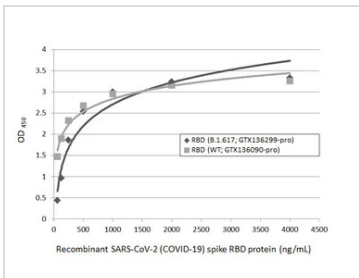
**GTX136299-pro ELISA Image**

Indirect ELISA analysis performed by coating plate with recombinant SARS-CoV-2 (COVID-19) Spike RBD (L452R, E484Q Mutant) protein, His tag (active) (Indian variant) (GTX136299-pro) and SARS-CoV-2 (COVID-19) Spike RBD protein, His tag (active) (Wild type) (GTX136090-pro) (4000-62.5 ng/mL). Coated protein was probed with SARS-CoV-2 (COVID-19) Spike RBD antibody [HL1003] (GTX635792) (1 µg/mL). Rabbit IgG antibody (HRP) (GTX213110-01) (1:10000) was used to detect bound primary antibody.



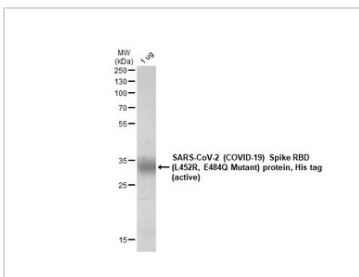
**GTX136299-pro ELISA Image**

Sandwich ELISA detection of recombinant SARS-CoV-2 (COVID-19) Spike RBD (L452R, E484Q Mutant) protein, His tag (active) (Indian variant) (GTX136299-pro) and SARS-CoV-2 (COVID-19) Spike RBD protein, His tag (active) (Wild type) (GTX136090-pro) using SARS-CoV-2 (COVID-19) Spike RBD antibody [HL1014] (GTX635807) as capture antibody at concentration of 5 µg/mL and HRP-conjugated SARS-CoV-2 (COVID-19) Spike RBD antibody [HL1002] (GTX635791) as detection antibody at concentration of 1 µg/mL. Please notice that GTX635791 needs to be conjugated to HRP to function as the detection antibody when paired with GTX635807. Please contact us for custom HRP-conjugated antibody.



**GTX136299-pro ELISA Image**

Indirect ELISA analysis performed by coating plate with recombinant SARS-CoV-2 (COVID-19) Spike RBD (L452R, E484Q Mutant) protein, His tag (active) (Indian variant) (GTX136299-pro) and SARS-CoV-2 (COVID-19) Spike RBD protein, His tag (active) (Wild type) (GTX136090-pro) (4000-62.5 ng/mL). Coated protein was probed with SARS-CoV-2 (COVID-19) Spike RBD antibody [HL1014] (GTX635807) (1 µg/mL). Rabbit IgG antibody (HRP) (GTX213110-01) (1:10000) was used to detect bound primary antibody.



**GTX136299-pro Image**

1 µg of GTX136299-pro SARS-CoV-2 (COVID-19) Spike RBD (L452R, E484Q Mutant) protein, His tag (active) protein was analyzed using SDS-PAGE and stained with coomassie blue and captured by monochrome camera.



For full product information, images and publications, please visit our [website](#).