



# SZABO SCANDIC

Part of Europa Biosite

## Produktinformation



Forschungsprodukte & Biochemikalien



Zellkultur & Verbrauchsmaterial



Diagnostik & molekulare Diagnostik



Laborgeräte & Service

Weitere Information auf den folgenden Seiten!  
See the following pages for more information!



### Lieferung & Zahlungsart

siehe unsere [Liefer- und Versandbedingungen](#)

### Zuschläge

- Mindermengenzuschlag
- Trockeneiszuschlag
- Gefahrgutzuschlag
- Expressversand

### SZABO-SCANDIC HandelsgmbH

Quellenstraße 110, A-1100 Wien

T. +43(0)1 489 3961-0

F. +43(0)1 489 3961-7

[mail@szabo-scandic.com](mailto:mail@szabo-scandic.com)

[www.szabo-scandic.com](http://www.szabo-scandic.com)

[linkedin.com/company/szaboscandic](https://www.linkedin.com/company/szaboscandic) 

# SARS-CoV-2 (COVID-19) Spike RBD Protein, B.1.617.2 / Delta variant, His tag (active)

## Cat No. GTX136332-pro

**Application** ELISA, Functional Assay

**Species** SARS Coronavirus 2

**Package**

100 µg

### PROPERTIES

**Form** Liquid

**Buffer** PBS

**Storage** Store as concentrated solution. Centrifuge briefly prior to opening vial. Aliquot and store at -20°C or below. Avoid multiple freeze-thaw cycles.

**Concentration** batch dependent (Please refer to the vial label for the specific concentration.)

**Region/Sequence** SARS-CoV-2 Spike RBD of QHD43416.1 (319-541 a.a) with L452R and T478K mutations and His tag at the C-terminus

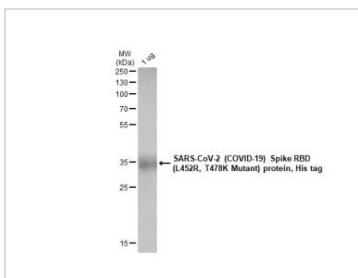
**Expression System** HEK293 cells

**Purity** >95%

**Conjugation** Unconjugated

**Note** For laboratory use only. Not for any clinical, therapeutic, or diagnostic use in humans or animals. Not for animal or human consumption.

### DATA IMAGES

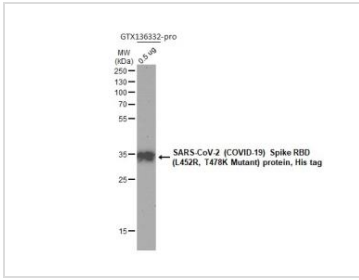


#### GTX136332-pro Image

1 µg of GTX136332-pro SARS-CoV-2 (COVID-19) Spike RBD (L452R, T478K Mutant) protein, His tag protein was analyzed using SDS-PAGE and stained with coomassie blue and captured by monochrome camera.

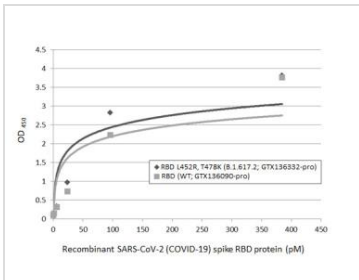


For full product information, images and publications, please visit our [website](#).



**GTX136332-pro Image**

SARS-CoV-2 (COVID-19) Spike RBD (L452R, T478K Mutant) protein, His tag protein (GTX136332-pro, 0.5 µg) was separated by 12% SDS-PAGE, and the membrane was blotted with SARS-CoV-2 (COVID-19) Spike RBD antibody [HL257] (GTX635692) diluted at 1:5000.



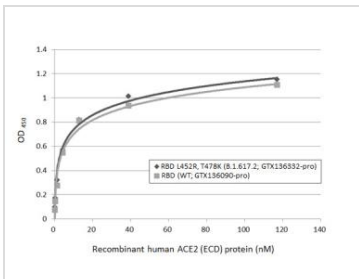
**GTX136332-pro ELISA Image**

Sandwich ELISA detection of recombinant Spike RBD proteins of SARS-CoV-2 (COVID-19) derived from different strains (Delta variant B.1.617.2 or Wide type strain) using the antibodies as follows.

Capture : SARS-CoV-2 (COVID-19) Spike RBD antibody [HL1014] (GTX635807) (5 µg/mL)

Detection: HRP-conjugated SARS-CoV-2 (COVID-19) Spike RBD antibody [HL1002] (GTX635791) (1 µg/mL)

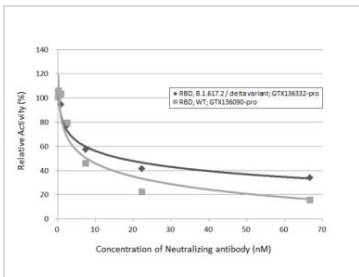
Please notice that GTX635791 needs to be conjugated to HRP to function as the detection antibody when paired with GTX635807. Contact us for custom HRP-conjugated antibody.



**GTX136332-pro Functional Assay Image**

Functional ELISA analysis of immobilized recombinant Spike RBD proteins of SARS-CoV-2 (COVID-19) derived from different strains (Delta variant B.1.617.2 or Wide type strain) (2 µg/mL) binding to soluble recombinant Human ACE2 (ECD) protein, mouse IgG Fc tag (active) (GTX135683-pro) (0.16-117.19 nM).

Bound protein was detected by Goat Anti-Mouse IgG antibody (HRP) (GTX213111-01) (1:10000).



**GTX136332-pro Functional Assay Image**

Inhibition analysis of immobilized recombinant RBD proteins derived from different strains of SARS-CoV-2 virus (Wild type or B1.617.2 delta variant) (coated at 2 µg/mL) binding to soluble recombinant Human ACE2 (ECD) protein, mouse IgG Fc tag (active) (GTX135683-pro) (1000 ng/mL) ACE2 binding was inhibited by increasing concentrations of SARS-CoV-2 (COVID-19) Spike RBD antibody [HL1002] (GTX635791) (0.09-66.67 nM). Bound ACE2 was detected by Goat Anti-Mouse IgG antibody (HRP) (GTX213111-01) (1:10000).



For full product information, images and publications, please visit our [website](https://www.genetex.com).