



SZABO SCANDIC

Part of Europa Biosite

Produktinformation



Forschungsprodukte & Biochemikalien



Zellkultur & Verbrauchsmaterial



Diagnostik & molekulare Diagnostik



Laborgeräte & Service

Weitere Information auf den folgenden Seiten!
See the following pages for more information!



Lieferung & Zahlungsart

siehe unsere [Liefer- und Versandbedingungen](#)

Zuschläge

- Mindermengenzuschlag
- Trockeneiszuschlag
- Gefahrgutzuschlag
- Expressversand

SZABO-SCANDIC HandelsgmbH

Quellenstraße 110, A-1100 Wien

T. +43(0)1 489 3961-0

F. +43(0)1 489 3961-7

mail@szabo-scandic.com

www.szabo-scandic.com

[linkedin.com/company/szaboscandic](https://www.linkedin.com/company/szaboscandic) 

Respiratory Syncytial virus type A Nucleoprotein, DDDDK tag

Cat. No. GTX136751-pro

Application	WB, ELISA, Lateral Flow, Sandwich ELISA
Species	Respiratory syncytial virus type A

Package
100 µg

APPLICATION

Application Note

Recommended antibody pairs for sandwich ELISA:

Capture: GTX636711 / GTX636710 / GTX636709, Detection: GTX636649 or Capture: GTX636649 / GTX636650, Detection: GTX636648.

Please notice that the detected antibody needs to be conjugated to HRP to function when paired with capture antibodies. Please contact us for custom HRP-conjugated antibody.

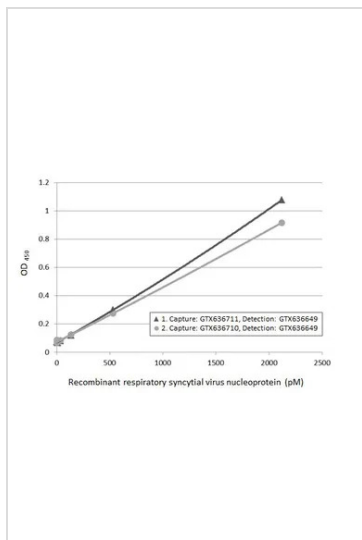
PROPERTIES

Form	Liquid
Buffer	Tris pH 7.4, 500mM NaCl
Preservative	No Preservative
Storage	Store as concentrated solution. Centrifuge briefly prior to opening vial. Aliquot and store at -20°C or below. Avoid multiple freeze-thaw cycles.
Concentration	0.2 mg/ml (Please refer to the vial label for the specific concentration.)
Region/Sequence	Respiratory syncytial virus of YP_009518852.1 (1-391 a.a) with DDDDK tag at the C-terminus
Expression System	HEK293 cells
Purity	>95%
Note	For <i>In vitro</i> laboratory use only. Not for any clinical, therapeutic, or diagnostic use in humans or animals. Not for animal or human consumption.



For full product information, images and publications, please visit our [website](#).

DATA IMAGES



GTX136751-pro ELISA Image

Sandwich ELISA detection of recombinant HEK293 expressed, full-length respiratory syncytial virus type A nucleoprotein, DDDDK tag (GTX136751-pro) using ELISA pairs below.

Pair 1:

Capture: Respiratory Syncytial virus type A Nucleoprotein antibody [HL1297] (GTX636711) (5 µg/mL)

Detection: Respiratory Syncytial virus Nucleoprotein antibody [HL1247] (GTX636649) conjugated with HRP (1 µg/mL)

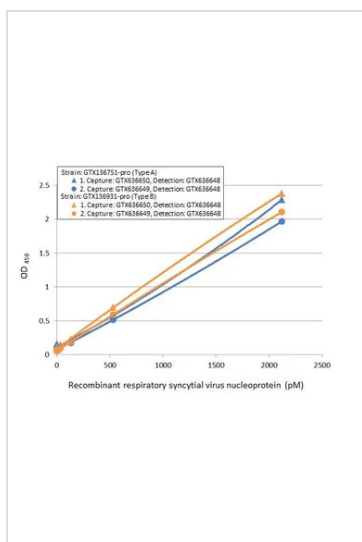
Pair 2:

Capture: Respiratory Syncytial virus Nucleoprotein antibody [HL1296] (GTX636710) (5 µg/mL)

Detection: Respiratory Syncytial virus Nucleoprotein antibody [HL1247] (GTX636649) conjugated with HRP (1 µg/mL)

Please notice that detection antibodies need to be conjugated to HRP to function when paired with capture one.

Please contact us for custom HRP-conjugated antibody.



GTX136751-pro ELISA Image

Sandwich ELISA of recombinant nucleoproteins (NP) derived from different strains of respiratory syncytial virus (i.e., type A; type B) using ELISA pairs below.

Pair 1:

Capture: Respiratory Syncytial virus Nucleoprotein antibody [HL1248] (GTX636650) (5 µg/mL)

Detection: Respiratory Syncytial virus Nucleoprotein antibody [HL1246] (GTX636648) conjugated with HRP (1 µg/mL)

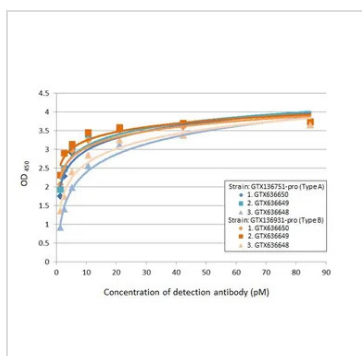
Pair 2:

Capture: Respiratory Syncytial virus Nucleoprotein antibody [HL1247] (GTX636649) (5 µg/mL)

Detection: Respiratory Syncytial virus Nucleoprotein antibody [HL1246] (GTX636648) conjugated with HRP (1 µg/mL)

Please notice that detection antibodies need to be conjugated to HRP to function when paired with capture one.

Please contact us for custom HRP-conjugated antibody.



GTX136751-pro ELISA Image

Indirect ELISA analysis performed by coating plate with recombinant nucleoproteins (NP) derived from different strains of respiratory syncytial virus (i.e., type A; type B) (84.76-1.32 nM). Coated protein was probed with Respiratory Syncytial virus Nucleoprotein antibodies (1 µg/mL) below. Goat anti-rabbit IgG antibody (HRP) (GTX213110-01) (1:10000) was used to detect bound primary antibody.

Antibodies:

1. Respiratory Syncytial virus Nucleoprotein antibody [HL1248] (GTX636650)
2. Respiratory Syncytial virus Nucleoprotein antibody [HL1247] (GTX636649)
3. Respiratory Syncytial virus type A Nucleoprotein antibody [HL1246] (GTX636648)



For full product information, images and publications, please visit our [website](#).