



# SZABO SCANDIC

Part of Europa Biosite

## Produktinformation



Forschungsprodukte & Biochemikalien



Zellkultur & Verbrauchsmaterial



Diagnostik & molekulare Diagnostik



Laborgeräte & Service

Weitere Information auf den folgenden Seiten!  
See the following pages for more information!



### Lieferung & Zahlungsart

siehe unsere [Liefer- und Versandbedingungen](#)

### Zuschläge

- Mindermengenzuschlag
- Trockeneiszuschlag
- Gefahrgutzuschlag
- Expressversand

### SZABO-SCANDIC HandelsgmbH

Quellenstraße 110, A-1100 Wien

T. +43(0)1 489 3961-0

F. +43(0)1 489 3961-7

[mail@szabo-scandic.com](mailto:mail@szabo-scandic.com)

[www.szabo-scandic.com](http://www.szabo-scandic.com)

[linkedin.com/company/szaboscandic](https://www.linkedin.com/company/szaboscandic) 

## SARS-CoV-2 (COVID-19) Nucleocapsid protein, Omicron / BA.1 variant, His tag

## Cat. No. GTX136779-pro

<b>Application</b>	WB, ELISA, Sandwich ELISA
<b>Species</b>	SARS Coronavirus 2

Package

100 µg

## APPLICATION

## Application Note

Recommended antibody pairs for sandwich ELISA:

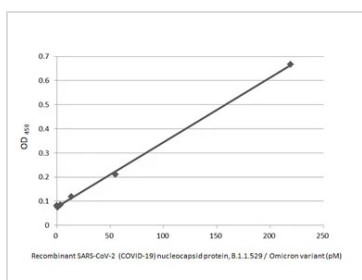
Capture : GTX635689, Detection : GTX635686-01 or Capture : GTX635685, Detection : GTX635688.

Please notice that GTX635688 needs to be conjugated to HRP to function as the detected antibody when paired with GTX635685. Please contact us for custom HRP-conjugated antibody.

## PROPERTIES

<b>Form</b>	Liquid
<b>Buffer</b>	90mM Tris pH7.4, 1M Arginine
<b>Preservative</b>	No preservative
<b>Storage</b>	Store as concentrated solution. Centrifuge briefly prior to opening vial. Aliquot and store at -20°C or below. Avoid multiple freeze-thaw cycles.
<b>Concentration</b>	0.13 mg/ml (Please refer to the vial label for the specific concentration.)
<b>Region/Sequence</b>	SARS-CoV-2 nucleocapsid of QHD43423.2 with P13L, E31del, R32del, S33del, G204R, R203K mutations and His tag at the C-terminus
<b>Expression System</b>	HEK293 cells
<b>Purity</b>	>95%
<b>Conjugation</b>	Unconjugated
<b>Note</b>	For <i>In vitro</i> laboratory use only. Not for any clinical, therapeutic, or diagnostic use in humans or animals. Not for animal or human consumption.

## DATA IMAGES



## GTX136779-pro ELISA Image

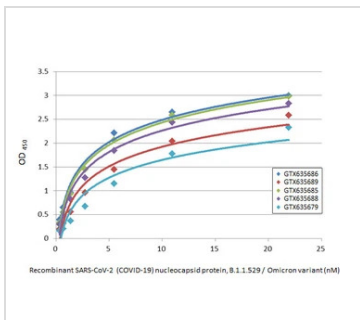
Sandwich ELISA detection of recombinant SARS-CoV-2 (COVID-19) nucleocapsid protein, B.1.1.529 / Omicron variant, His tag (GTX136779-pro) using antibodies as below.

**Capture:** SARS-CoV-2 (COVID-19) nucleocapsid antibody [HL5511] (GTX635689) (5 µg/mL)

**Detection:** SARS-CoV-2 (COVID-19) nucleocapsid antibody [HL448] (HRP) (GTX635686-01) (1 µg/mL)

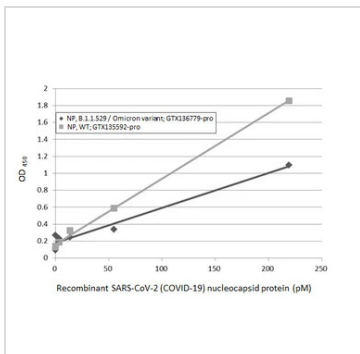


For full product information, images and publications, please visit our [website](#).



**GTX136779-pro ELISA Image**

Indirect ELISA analysis performed by coating plate with recombinant SARS-CoV-2 (COVID-19) nucleocapsid protein, B.1.1.529 / Omicron variant, His tag (GTX136779-pro) (21.91-0.34 nM). Coated protein was probed with SARS-CoV-2 (COVID-19) nucleocapsid antibody [HL448] (GTX635686), SARS-CoV-2 (COVID-19) nucleocapsid antibody [HL5511] (GTX635689), SARS-CoV-2 (COVID-19) nucleocapsid antibody [HL5410] (GTX635685), SARS-CoV-2 (COVID-19) nucleocapsid antibody [HL455] (GTX635688), and SARS-CoV-2 (COVID-19) nucleocapsid antibody [HL344] (GTX635679) (1 µg/mL). Goat anti-rabbit IgG antibody (HRP) (GTX213110-01) (1:10000) was used to detect bound primary antibody.



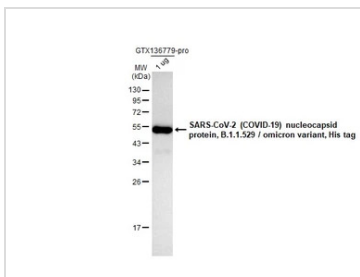
**GTX136779-pro ELISA Image**

Sandwich ELISA detection of recombinant nucleocapsid protein(s) derived from different strains of SARS-CoV-2 virus (ie., Wild type; B.1.1.529 Omicron variant) using antibodies as below.

**Capture:** SARS-CoV-2 (COVID-19) nucleocapsid antibody [HL5410] (GTX635685) (5 µg/mL)

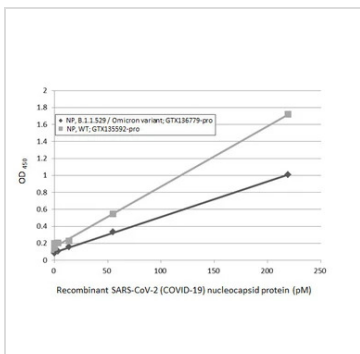
**Detection:** HRP-conjugated SARS-CoV-2 (COVID-19) nucleocapsid antibody [HL455] (GTX635688) (1 µg/mL)

Please notice that GTX635688 needs to be conjugated to HRP to function as the detection antibody when paired with GTX635685. Please contact us for custom HRP-conjugated antibody.



**GTX136779-pro WB Image**

SARS-CoV-2 (COVID-19) nucleocapsid protein, B.1.1.529 / omicron variant, His tag (1 µg, GTX136779-pro) were separated by 12% SDS-PAGE, and the membrane was blotted with SARS-CoV-2 (COVID-19) nucleocapsid antibody [HL5511] (GTX635689) diluted at 1:5000. The HRP-conjugated anti-rabbit IgG antibody (GTX213110-01) was used to detect the primary antibody.



**GTX136779-pro ELISA Image**

Sandwich ELISA detection of recombinant nucleocapsid protein(s) derived from different strains of SARS-CoV-2 virus (ie., Wild type; B.1.1.529 Omicron variant) using antibodies as below.

**Capture:** SARS-CoV-2 (COVID-19) nucleocapsid antibody [HL5511] (GTX635689) (5 µg/mL)

**Detection:** HRP-conjugated SARS-CoV-2 (COVID-19) nucleocapsid antibody [HL448] (GTX635686) (1 µg/mL)

Please notice that GTX635686 needs to be conjugated to HRP to function as the detection antibody when paired with GTX635689. Please contact us for custom HRP-conjugated antibody.



For full product information, images and publications, please visit our [website](#).