



SZABO SCANDIC

Part of Europa Biosite

Produktinformation



Forschungsprodukte & Biochemikalien



Zellkultur & Verbrauchsmaterial



Diagnostik & molekulare Diagnostik



Laborgeräte & Service

Weitere Information auf den folgenden Seiten!
See the following pages for more information!



Lieferung & Zahlungsart

siehe unsere [Liefer- und Versandbedingungen](#)

Zuschläge

- Mindermengenzuschlag
- Trockeneiszuschlag
- Gefahrgutzuschlag
- Expressversand

SZABO-SCANDIC HandelsgmbH

Quellenstraße 110, A-1100 Wien

T. +43(0)1 489 3961-0

F. +43(0)1 489 3961-7

mail@szabo-scandic.com

www.szabo-scandic.com

[linkedin.com/company/szaboscandic](https://www.linkedin.com/company/szaboscandic) 

SARS-CoV-2 (COVID-19) Spike (ECD) Protein, Omicron / BA.1 variant, His tag

Cat. No. GTX136780-pro

Application	Binding Assay, WB, ELISA, Sandwich ELISA
Species	SARS Coronavirus 2

Reference (1)
 Package
 100 µg

APPLICATION

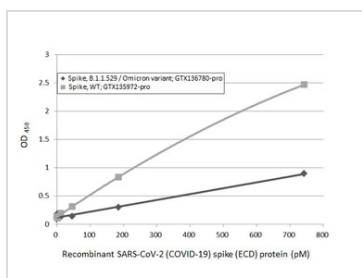
Application Note

Recommended antibody pairs for sandwich ELISA:
 Capture : GTX635807, Detection : GTX635792-01.

PROPERTIES

Form	Lyophilized powder
Buffer	Reconstitute with 50% glycerol in distilled water to 0.1-1mg/ml. Lyophilized from PBS, 2% Trehalose, 5% Mannitol, 0.01% Tween-80.
Preservative	No Preservative
Storage	Store at 4°C or below. After reconstitution, keep as concentrated solution. Aliquot and store at -20°C or below. Avoid freeze-thaw cycles.
Region/Sequence	SARS-CoV-2 Spike of QHD43416.1 (1-1213 a.a, extracellular domain) with Omicron variant (BA.1 / B.1.1.529) mutations (A67V, del69-70, T95I, del142-144, Y145D, del211, L212I, ins214EPE, G339D, S371L, S373P, S375F, K417N, N440K, G446S, S477N, T478K, E484A, Q493R, G496S, Q498R, N501Y, Y505H, T547K, D614G, H655Y, N679K, P681H, N764K, D796Y, N856K, Q954H, N969K, L981F), and T4 trimerization domain as well as a C-terminal His tag.
Expression System	HEK293 cells
Purity	>95%
Conjugation	Unconjugated
Note	For <i>In vitro</i> laboratory use only. Not for any clinical, therapeutic, or diagnostic use in humans or animals. Not for animal or human consumption.

DATA IMAGES



GTX136780-pro ELISA Image

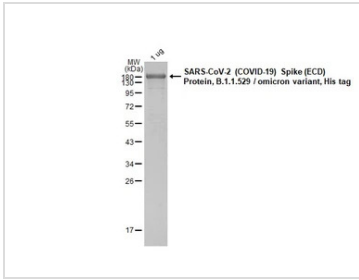
Sandwich ELISA detection of recombinant Spike ECD protein(s) derived from different strains of SARS-CoV-2 virus (ie., Wild type; B.1.1.529 Omicron variant) using antibodies as below.

Capture: SARS-CoV-2 (COVID-19) Spike RBD antibody [HL1014] (GTX635807) (5 µg/mL)

Detection: SARS-CoV-2 (COVID-19) Spike RBD antibody [HL1003] (HRP) (GTX635792-01) (1 µg/mL)

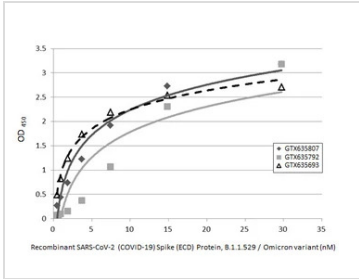


For full product information, images and publications, please visit our [website](#).



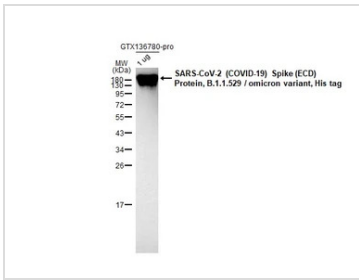
GTx136780-pro Image

GTx136780-pro SARS-CoV-2 (COVID-19) Spike (ECD) Protein, B.1.1.529 / omicron variant, His tag protein were analyzed using SDS-PAGE and stained with coomassie blue and captured by monochrome camera.



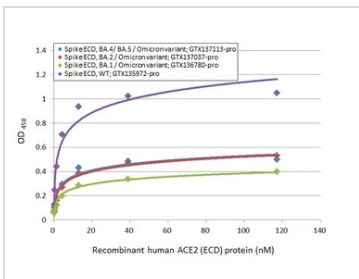
GTx136780-pro ELISA Image

Indirect ELISA analysis performed by coating plate with recombinant SARS-CoV-2 (COVID-19) Spike (ECD) Protein, B.1.1.529 / Omicron variant, His tag (GTx136780-pro) (29.71-0.46 nM). Coated protein was probed with SARS-CoV-2 (COVID-19) Spike RBD antibody [HL1014] (GTx635807), SARS-CoV-2 (COVID-19) Spike RBD antibody [HL1003] (GTx635792), and SARS-CoV-2 (COVID-19) Spike S2 antibody [HL237] (GTx635693) (1 µg/mL). Goat anti-rabbit IgG antibody (HRP) (GTx213110-01) (1:10000) was used to detect bound primary antibody.



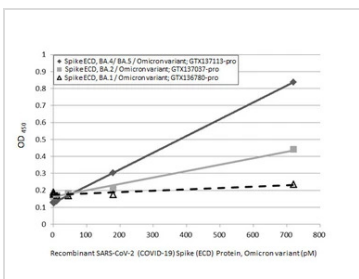
GTx136780-pro WB Image

SARS-CoV-2 (COVID-19) Spike (ECD) Protein, B.1.1.529 / omicron variant, His tag (1 µg, GTx136780-pro) were separated by 12% SDS-PAGE, and the membrane was blotted with SARS-CoV-2 (COVID-19) Spike RBD antibody [HL257] (GTx635692) diluted at 1:5000. The HRP-conjugated anti-rabbit IgG antibody (GTx213110-01) was used to detect the primary antibody.



GTx136780-pro Binding Assay Image

Functional ELISA analysis of immobilized recombinant Spike ECD protein(s) derived from different strains of SARS-CoV-2 virus (ie., Wild type; BA.1 Omicron variant; BA.2 Omicron variant; BA.4/BA.5 Omicron variant) (coated at 2 µg/mL) binding to soluble recombinant Human ACE2 (ECD) protein, mouse IgG Fc tag (active) (GTx135683-pro) (0.16-117.19 nM). Bound protein was detected by Goat Anti-Mouse IgG antibody (HRP) (GTx213111-01) (1:10000).



GTx136780-pro ELISA Image

Sandwich ELISA detection of recombinant Spike ECD protein(s) derived from different strains of SARS-CoV-2 virus (ie., BA.1 Omicron variant; BA.2 Omicron variant; BA.4/BA.5 Omicron variant) using antibodies as below.

Capture: SARS-CoV-2 (COVID-19) Spike RBD antibody [HL1014] (GTx635807) (5 µg/mL)

Detection: SARS-CoV-2 (COVID-19) Spike RBD antibody [HL1004] (HRP) (GTx635793-01) (1 µg/mL)



For full product information, images and publications, please visit our [website](https://www.genetex.com).