



SZABO SCANDIC

Part of Europa Biosite

Produktinformation



Forschungsprodukte & Biochemikalien



Zellkultur & Verbrauchsmaterial



Diagnostik & molekulare Diagnostik



Laborgeräte & Service

Weitere Information auf den folgenden Seiten!
See the following pages for more information!



Lieferung & Zahlungsart

siehe unsere [Liefer- und Versandbedingungen](#)

Zuschläge

- Mindermengenzuschlag
- Trockeneiszuschlag
- Gefahrgutzuschlag
- Expressversand

SZABO-SCANDIC HandelsgmbH

Quellenstraße 110, A-1100 Wien

T. +43(0)1 489 3961-0

F. +43(0)1 489 3961-7

mail@szabo-scandic.com

www.szabo-scandic.com

[linkedin.com/company/szaboscandic](https://www.linkedin.com/company/szaboscandic) 

SARS-CoV-2 (COVID-19) Spike RBD Protein, Omicron / BA.2 variant, His tag

Cat No. GTX136905-pro

Application	WB, ELISA, Sandwich ELISA
Species	SARS Coronavirus 2

Package

100 µg

APPLICATION

Application Note

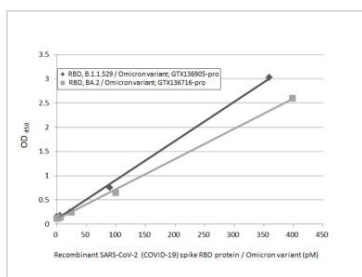
Recommended antibody pairs for sandwich ELISA:

Capture : GTX635807, Detection : GTX635792-01.

PROPERTIES

Form	Lyophilized powder
Buffer	Reconstitute with 50% glycerol in distilled water to 0.1-1mg/ml. Lyophilized from buffer
Preservative	No Preservative
Storage	Store at 4°C or below. After reconstitution, keep as concentrated solution. Aliquot and store at -20°C or below. Avoid freeze-thaw cycles.
Region/Sequence	SARS-CoV-2 Spike RBD of QHD43416.1 (319-541 a.a) with G339D, S371F, S373P, S375F, T376A, D405N, R408S, K417N, N440K, S477N, T478K, E484A, Q493R, Q498R, N501Y, Y505H mutations, and His tag at the C-terminus
Expression System	HEK293 cells
Purity	>95%
Conjugation	Unconjugated
Note	For laboratory use only. Not for any clinical, therapeutic, or diagnostic use in humans or animals. Not for animal or human consumption.

DATA IMAGES



GTX136905-pro ELISA Image

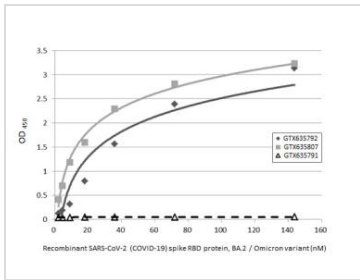
Sandwich ELISA detection of recombinant Spike RBD Protein(s) derived from different strains of SARS-CoV-2 virus (ie., B.1.1.529 Omicron variant; BA.2 Omicron variant) using antibodies as below.

Capture: SARS-CoV-2 (COVID-19) Spike RBD antibody [HL1014] (GTX635807) (5 µg/mL)

Detection: SARS-CoV-2 (COVID-19) Spike RBD antibody [HL1003] (HRP) (GTX635792-01) (1 µg/mL)

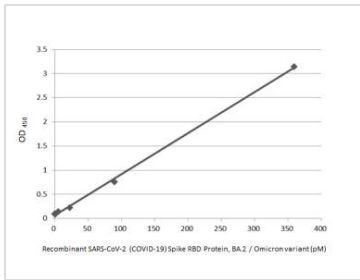


For full product information, images and publications, please visit our [website](#).



GTX136905-pro ELISA Image

Indirect ELISA analysis performed by coating plate with recombinant SARS-CoV-2 (COVID-19) Spike RBD Protein, BA.2 / Omicron variant, His tag (GTX136905-pro) (143.73-2.25 nM). Coated protein was probed with SARS-CoV-2 (COVID-19) Spike RBD antibody [HL1003] (GTX635792), SARS-CoV-2 (COVID-19) Spike RBD antibody [HL1014] (GTX635807), and SARS-CoV-2 (COVID-19) Spike RBD antibody [HL1002] (GTX635791) (1 µg/mL). Goat anti-rabbit IgG antibody (HRP) (GTX213110-01) (1:10000) was used to detect bound primary antibody.

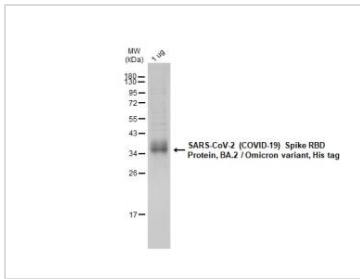


GTX136905-pro ELISA Image

Sandwich ELISA detection of recombinant SARS-CoV-2 (COVID-19) Spike RBD Protein, BA.2 / Omicron variant, His tag (GTX136905-pro) using antibodies as below.

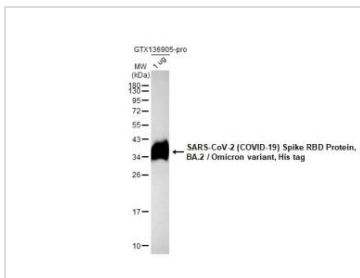
Capture: SARS-CoV-2 (COVID-19) Spike RBD antibody [HL1014] (GTX635807) (5 µg/mL)

Detection: SARS-CoV-2 (COVID-19) Spike RBD antibody [HL1003] (HRP) (GTX635792-01) (1 µg/mL)



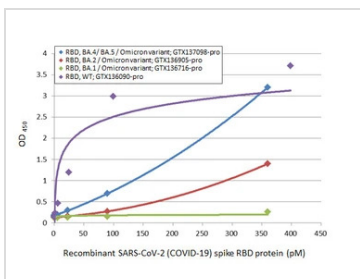
GTX136905-pro Image

GTX136905-pro SARS-CoV-2 (COVID-19) Spike RBD Protein, BA.2 / Omicron variant, His tag protein was analyzed using SDS-PAGE and stained with coomassie blue and captured by monochrome camera.



GTX136905-pro WB Image

SARS-CoV-2 (COVID-19) Spike RBD Protein, BA.2 / Omicron variant, His tag (1 µg, GTX136905-pro) was separated by 12% SDS-PAGE, and the membrane was blotted with SARS-CoV-2 (COVID-19) Spike RBD antibody [HL257] (GTX635692) diluted at 1:5000. The HRP-conjugated anti-rabbit IgG antibody (GTX213110-01) was used to detect the primary antibody.



GTX136905-pro ELISA Image

Sandwich ELISA detection of recombinant Spike RBD Protein(s) derived from different strains of SARS-CoV-2 virus (ie., Wild type; BA.1 Omicron variant; BA.2 Omicron variant; BA.4/ BA.5 Omicron variant) using antibodies as below.

Capture: SARS-CoV-2 (COVID-19) Spike RBD antibody [HL1014] (GTX635807) (5 µg/mL)

Detection: SARS-CoV-2 (COVID-19) Spike RBD antibody [HL1004] (HRP) (GTX635793-01) (1 µg/mL)



For full product information, images and publications, please visit our [website](#).